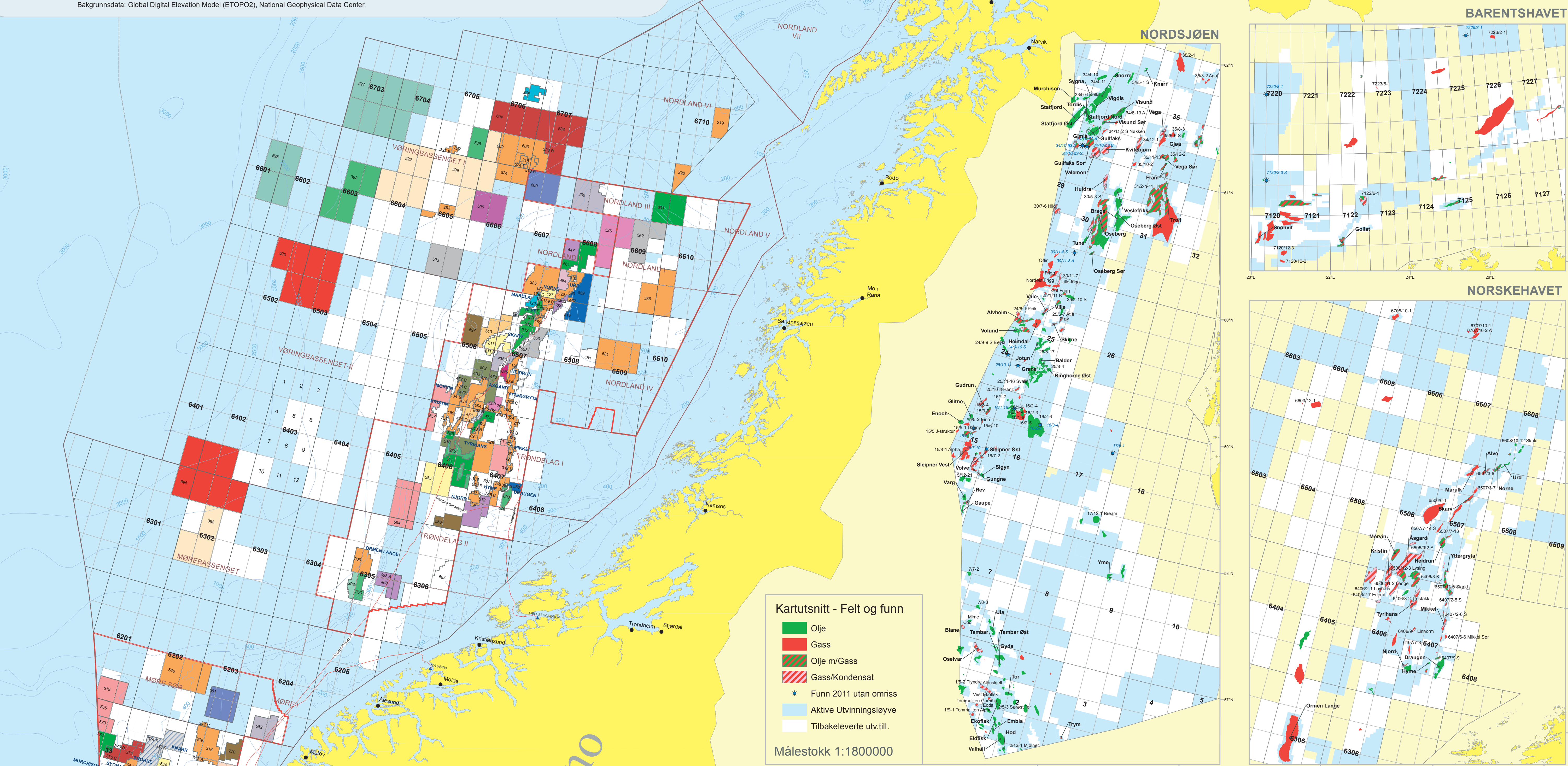
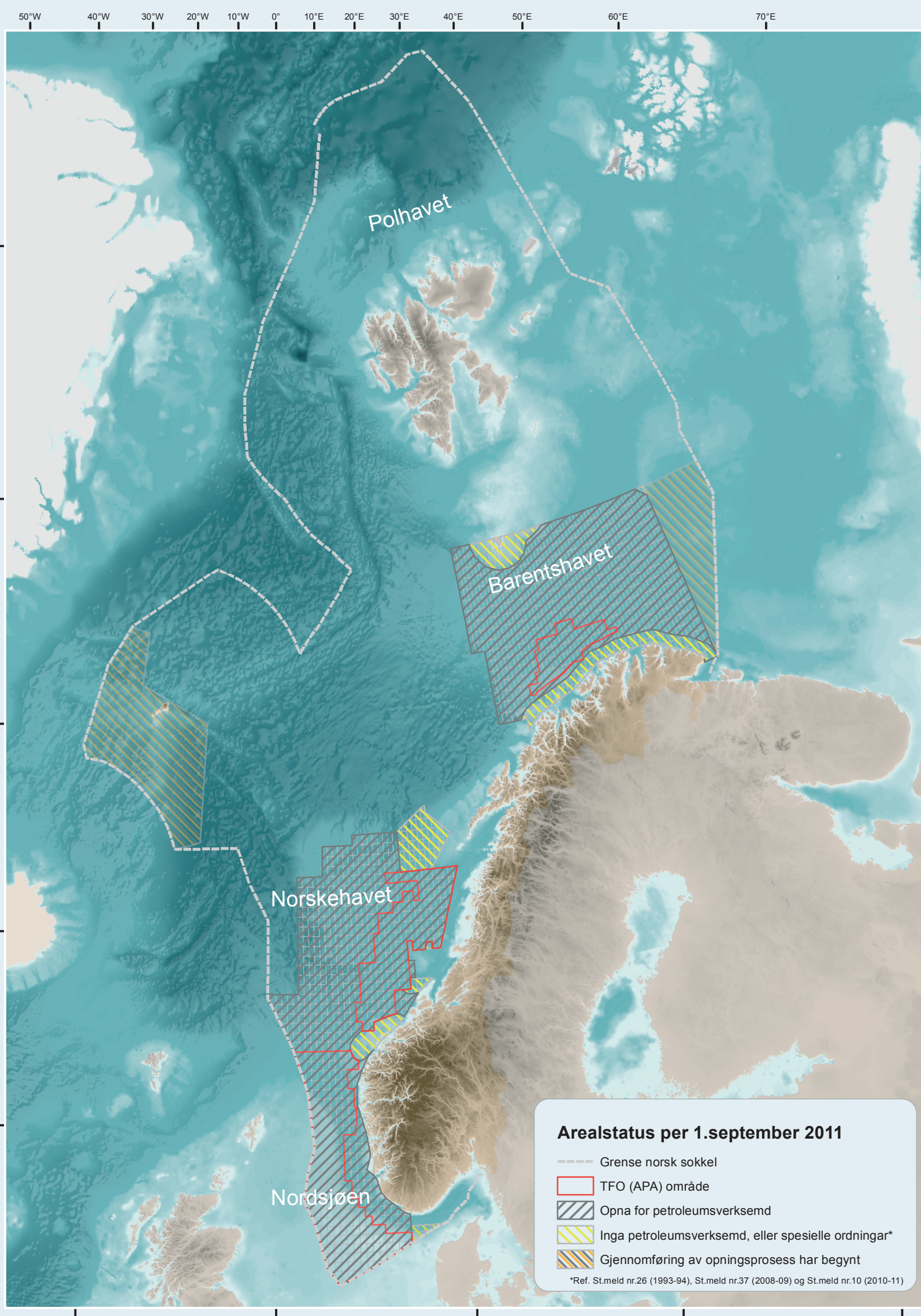


Den norske kontinentalsokkel

Utvinningssløyve per 1. september 2011
 Utarbeida av Oljedirektoratet - www.npd.no

OLJEDIREKTORATET



Operatorar i aktive utvinningssløyve tildelt mellom 01/09/1965 og 01/09/2011

Utv. løyve	Blocker	Operatør	Utv. løyve	Blocker	Operatør	Utv. løyve	Blocker	Operatør	Utv. løyve	Blocker	Operatør	Utv. løyve	Blocker	Operatør	Utv. løyve	Blocker	Operatør
001 B	2911	Esso/Mobil Exploration & Production Norway AS	005 C	314	Statoil Petroleum AS	153 B	359	GDF SUEZ EAP Norge AS	292 B	1912	BG Norge AS	409	167	Lundin Norway AS	509 D	203, 206, 201, 304	Wintershall Norge ASA
006 B	25	Total EAP Norge AS	055 C	314	Statoil Petroleum AS	158	6870	BP Norge AS	297	16	BP Norge AS	411	171, 2010	Wintershall Norge ASA	513	4406, 4406A, 4406B	Centrica Reservoir Norge AS
008 B	28	BP Norge AS	067	204	Statoil Petroleum AS	159 B	6870	Statoil Petroleum AS	299	21	Talman Energy Norge AS	414	203, 205, 206	Det norske oljeselskap ASA	512	64071, 64071A, 64071B	Det norske oljeselskap ASA
009 C	25	Lundin Norway AS	074	71208	Statoil Petroleum AS	159 D	6870	Statoil Petroleum AS	301	711, 718	Talman Energy Norge AS	416	208, 209	Wintershall Norge ASA	513	2013, 2017	Statoil Petroleum AS
009 D	16	Lundin Norway AS	085	13	BP Norge AS	167	161	Statoil Petroleum AS	301 B	78	Talman Energy Norge AS	420	309	RWE Dea Norge AS	515	2013, 2010	Det norske oljeselskap ASA
012 B	24, 27, 2011	ConocoPhillips Scandinavia AS	092	167	Esso/Mobil Exploration & Production Norway AS	167 B	2010	Statoil Petroleum AS	301 D	711, 718	Talman Energy Norge AS	420	64071, 64071A, 64071B	Marathon Petroleum Norge AS	516	68810, 68810A	Statoil Petroleum AS
012 C	15	Marathon Petroleum Norge AS	092 B	167	Statoil Petroleum AS	169 B	2011	Statoil Petroleum AS	301 E	711, 718	Talman Energy Norge AS	421	68810, 68810A, 68810B	Marathon Petroleum Norge AS	517	2013, 2010, 307	Wintershall Norge ASA
012 D	1712	Talman Energy Norge AS	092 C	6001	Statoil Petroleum AS	169 C	2011	Statoil Petroleum AS	301 F	711, 718	Talman Energy Norge AS	421	68810, 68810A, 68810B, 68810C	Marathon Petroleum Norge AS	517	2013, 2010, 307	Wintershall Norge ASA
012 E	15	Talman Energy Norge AS	092 D	6002	Statoil Petroleum AS	169 D	2012, 2012A	Statoil Petroleum AS	302	152, 153, 155, 156	Statoil Petroleum AS	423	68810, 68810A, 68810B, 68810C, 68810D	Centrica Reservoir Norge AS	517	2013, 2010, 307	Wintershall Norge ASA
012 F	1712	Talman Energy Norge AS	092 E	6003	Statoil Petroleum AS	169 E	2012	Statoil Petroleum AS	303	152, 153, 155, 156	Statoil Petroleum AS	423	68810, 68810A, 68810B, 68810C, 68810D, 68810E	Centrica Reservoir Norge AS	517	2013, 2010, 307	Wintershall Norge ASA
012 G	1712	Talman Energy Norge AS	092 F	6004	Statoil Petroleum AS	169 F	2012	Statoil Petroleum AS	303 B	156	Statoil Petroleum AS	424	68810	Centrica Reservoir Norge AS	518	2013, 2010, 307	Wintershall Norge ASA
012 H	1712	Talman Energy Norge AS	092 G	6005	Statoil Petroleum AS	169 G	2012, 2012A	Statoil Petroleum AS	303 C	156, 156A, 156B, 156C	Statoil Petroleum AS	424	68810, 68810A, 68810B, 68810C, 68810D, 68810E, 68810F	Centrica Reservoir Norge AS	518	2013, 2010, 307	Wintershall Norge ASA
012 I	1712	Talman Energy Norge AS	092 H	6006	Statoil Petroleum AS	169 H	2012	Statoil Petroleum AS	303 D	156, 156A, 156B, 156C	Statoil Petroleum AS	424	68810, 68810A, 68810B, 68810C, 68810D, 68810E, 68810F, 68810G	Centrica Reservoir Norge AS	518	2013, 2010, 307	Wintershall Norge ASA
012 J	1712	Talman Energy Norge AS	092 I	6007	Statoil Petroleum AS	169 I	2012	Statoil Petroleum AS	303 E	156, 156A, 156B, 156C	Statoil Petroleum AS	424	68810, 68810A, 68810B, 68810C, 68810D, 68810E, 68810F, 68810G, 68810H	Centrica Reservoir Norge AS	518	2013, 2010, 307	Wintershall Norge ASA
012 K	1712	Talman Energy Norge AS	092 L	6008	Statoil Petroleum AS	169 J	2012	Statoil Petroleum AS	303 F	156, 156A, 156B, 156C	Statoil Petroleum AS	424	68810, 68810A, 68810B, 68810C, 68810D, 68810E, 68810F, 68810G, 68810H, 68810I	Centrica Reservoir Norge AS	518	2013, 2010, 307	Wintershall Norge ASA
012 L	1712	Talman Energy Norge AS	092 M	6009	Statoil Petroleum AS	169 K	2012	Statoil Petroleum AS	303 G	156, 156A, 156B, 156C	Statoil Petroleum AS	424	68810, 68810A, 68810B, 68810C, 68810D, 68810E, 68810F, 68810G, 68810H, 68810I, 68810J	Centrica Reservoir Norge AS	518	2013, 2010, 307	Wintershall Norge ASA
012 M	1712	Talman Energy Norge AS	092 N	6010	Statoil Petroleum AS	169 L	2012	Statoil Petroleum AS	303 H	156, 156A, 156B, 156C	Statoil Petroleum AS	424	68810, 68810A, 68810B, 68810C, 68810D, 68810E, 68810F, 68810G, 68810H, 68810I, 68810J, 68810K	Centrica Reservoir Norge AS	518	2013, 2010, 307	Wintershall Norge ASA
012 N	1712	Talman Energy Norge AS	092 O	6011	Statoil Petroleum AS	169 M	2012	Statoil Petroleum AS	303 I	156, 156A, 156B, 156C	Statoil Petroleum AS	424	68810, 68810A, 68810B, 68810C, 68810D, 68810E, 68810F, 68810G, 68810H, 68810I, 68810J, 68810K, 68810L	Centrica Reservoir Norge AS	518	2013, 2010, 307	Wintershall Norge ASA
012 O	1712	Talman Energy Norge AS	092 P	6012	Statoil Petroleum AS	169 N	2012	Statoil Petroleum AS	303 J	156, 156A, 156B, 156C	Statoil Petroleum AS	424	68810, 68810A, 68810B, 68810C, 68810D, 68810E, 68810F, 68810G, 68810H, 68810I, 68810J, 68810K, 68810L, 68810M	Centrica Reservoir Norge AS	518	2013, 2010, 307	Wintershall Norge ASA
012 P	1712	Talman Energy Norge AS	092 Q	6013	Statoil Petroleum AS	169 O	2012	Statoil Petroleum AS	303 K	156, 156A, 156B, 156C	Statoil Petroleum AS	424	68810, 68810A, 68810B, 68810C, 68810D, 68810E, 68810F, 68810G, 68810H, 68810I, 68810J, 68810K, 68810L, 68810M, 68810N	Centrica Reservoir Norge AS	518	2013, 2010, 307	Wintershall Norge ASA
012 R	1712	Talman Energy Norge AS	092 S	6014	Statoil Petroleum AS	169 P	2012	Statoil Petroleum AS	303 L	156, 156A, 156B, 156C	Statoil Petroleum AS	424	68810, 68810A, 68810B, 68810C, 68810D, 68810E, 68810F, 68810G, 68810H, 68810I, 68810J, 68810K, 68810L, 68810M, 68810N, 68810O	Centrica Reservoir Norge AS	518	2013, 2010, 307	Wintershall Norge ASA
012 S	1712	Talman Energy Norge AS	092 T	6015	Statoil Petroleum AS	169 Q	2012	Statoil Petroleum AS	303 M	156, 156A, 156B, 156C	Statoil Petroleum AS	424	68810, 68810A, 68810B, 68810C, 68810D, 68810E, 68810F, 68810G, 68810H, 68810I, 68810J, 68810K, 68810L, 68810M, 68810N, 68810O, 68810P	Centrica Reservoir Norge AS	518	2013, 2010, 307	Wintershall Norge ASA
012 T	1712	Talman Energy Norge AS	092 U	6016	Statoil Petroleum AS	169 R	2012	Statoil Petroleum AS	303 N	156, 156A, 156B, 156C	Statoil Petroleum AS	424	68810, 68810A, 68810B, 68810C, 68810D, 68810E, 68810F, 68810G, 68810H, 68810I, 68810J, 68810K, 68810L, 68810M, 68810N, 68810O, 68810P, 68810Q	Centrica Reservoir Norge AS	518	2013, 2010, 307	Wintershall Norge ASA
012 V	1712	Talman Energy Norge AS	092 W	6017	Statoil Petroleum AS	169 S	2012	Statoil Petroleum AS	303 O	156, 156A, 156B, 156C	Statoil Petroleum AS	424	68810, 68810A, 68810B, 68810C, 68810D, 68810E, 68810F, 68810G, 68810H, 68810I, 68810J, 68810K, 68810L, 68810M, 68810N, 68810O, 68810P, 68810Q, 68810R	Centrica Reservoir Norge AS	518	2013, 2010, 307	Wintershall Norge ASA
012 X	1712	Talman Energy Norge AS	092 Y	6018	Statoil Petroleum AS	169 T	2012	Statoil Petroleum AS	303 P	156, 156A, 156B, 156C	Statoil Petroleum AS	424	68810, 68810A, 68810B, 68810C, 68810D, 68810E, 68810F, 68810G, 68810H, 68810I, 68810J, 68810K, 68810L, 68810M, 68810N, 68810O, 68810P, 68810Q, 68810R, 68810S	Centrica Reservoir Norge AS	518	2013, 2010, 307	Wintershall Norge ASA
012 Y	1712	Talman Energy Norge AS	092 Z	6019	Statoil Petroleum AS	169 U	2012	Statoil Petroleum AS	303 Q	156, 156A, 156B, 156C	Statoil Petroleum AS	424	68810, 68810A, 68810B, 68810C, 68810D, 68810E, 68810F, 68810G, 68810H, 68810I, 68810J, 68810K, 68810L, 68810M, 68810N, 68810O, 68810P, 68810Q, 68810R, 68810S, 68810T	Centrica Reservoir Norge AS	518	2013, 2010, 307	Wintershall Norge ASA
013 A	1712	Talman Energy Norge AS	093 A	6020	Statoil Petroleum AS	169 V	2012	Statoil Petroleum AS	303 R	156, 156A, 156B, 156C	Statoil Petroleum AS	424	68810, 68810A, 68810B, 68810C, 68810D, 68810E, 68810F, 68810G, 68810H, 68810I, 68810J, 68810K, 68810L, 68810M, 68810N, 68810O, 68810P, 68810Q, 68810R, 68810S, 68810T, 68810U	Centrica Reservoir Norge AS	518	2013, 2010, 307	Wintershall Norge ASA
013 B	1712	Talman Energy Norge AS	093 B	6021	Statoil Petroleum AS	169 W	2012	Statoil Petroleum AS	303 S	156, 156A, 156B, 156C	Statoil Petroleum AS	424	68810, 68810A, 68810B, 68810C, 68810D, 68810E, 68810F, 68810G, 68810H, 68810I, 68810J, 68810K, 68810L, 68810M, 68810N, 68810O, 68810P, 68810Q, 68810R, 68810S, 68810T, 68810U, 68810V	Centrica Reservoir Norge AS	518	2013, 2010, 307	Wintershall Norge ASA
013 C	1712	Talman Energy Norge AS	093 C	6022	Statoil Petroleum AS	169 X	2012	Statoil Petroleum AS	303 T	156, 156A, 156B, 156C	Statoil Petroleum AS	424	68810, 68810A, 68810B, 68810C, 68810D, 68810E, 68810F, 68810G, 68810H, 68810I, 68810J, 68810K, 68810L, 68810M, 68810N, 68810O, 68810P, 68810Q, 68810R, 68810S, 68810T, 68810U, 68810V, 68810W	Centrica Reservoir Norge AS	518	2013, 2010, 307	Wintershall Norge ASA
013 D	1712	Talman Energy Norge AS	093 D	6023	Statoil Petroleum AS	169 Y	2012	Statoil Petroleum AS	303 U	156, 156A, 156B, 156C	Statoil Petroleum AS	424	68810, 68810A, 68810B, 68810C, 68810D, 68810E, 68810F, 68810G, 68810H, 68810I, 68810J, 68810K, 68810L, 68810M, 68810N, 68810O, 68810P, 68810Q, 68810R, 68810S, 68810T, 68810U, 68810V, 68810W, 68810X	Centrica Reservoir Norge AS	518	2013, 2010, 307	Wintershall Norge ASA
013 E	1712	Talman Energy Norge AS	093 E	6024	Statoil Petroleum AS	169 Z	2012	Statoil Petroleum AS	303 V	156, 156A, 156B, 156C	Statoil Petroleum AS	424	68810, 68810A, 68810B, 68810C, 68810D, 68810E, 68810F, 68810G, 68810H, 68810I, 68810J, 68810K, 68810L, 68810M, 68810N, 68810O, 68810P, 68810Q, 68810R, 68810S, 68810T, 68810U, 68810V, 68810W, 68810X, 68810Y	Centrica Reservoir Norge AS	518	2013, 2010, 307	Wintershall Norge ASA
013 F	1712	Talman Energy Norge AS	093 F	6025	Statoil Petroleum AS	170 A	2012	Statoil Petroleum AS	303 W	156, 156A, 156B, 156C	Statoil Petroleum AS	424	68810, 68810A, 68810B, 68810C, 68810D, 68810E, 68810F, 68810G, 68810H, 68810I, 68810J, 68810K, 68810L, 68810M, 68810N, 68810O, 68810P, 68810Q, 68810R, 68810S, 68810T, 68810U, 68810V, 68810W, 68810X, 68810Y, 68810Z	Centrica Reservoir Norge AS	518	2013, 2010, 307	Wintershall Norge ASA
013 G	1712	Talman Energy Norge AS	093 G	6026	Statoil Petroleum AS	170 B	2012	Statoil Petroleum AS	303 X	156, 156A, 156B, 156C	Statoil Petroleum AS	424	68810, 68810A, 68810B, 68810C, 68810D, 68810E, 68810F, 68810G, 68810H, 68810I, 68810J, 68810K, 68810L, 68810M, 68810N, 68810O, 68810P, 68810Q, 68810R, 68810S, 68810T, 68810U, 68810V, 68810W, 68810X, 68810Y, 68810Z, 68810AA	Centrica Reservoir Norge AS	518	2013, 2010, 307	Wintershall Norge ASA
013 H	1712	Talman Energy Norge AS	093 H	6027	Statoil Petroleum AS	170 C	2012	Statoil Petroleum AS	303 Y	156, 156A, 156B, 156C	Statoil Petroleum AS	424	68810, 68810A, 68810B, 68810C, 68810D, 68810E, 68810F, 68810G, 68810H, 68810I, 68810J, 68810K, 68810L, 68810M, 68810N, 68810O, 68810P, 68810Q, 68810R, 68810S, 68810T, 68810U, 68810V, 68810W, 68810X, 68810Y, 68810Z, 68810AAA	Centrica Reservoir Norge AS	518	2013, 2010, 307	Wintershall Norge ASA
013 I	1712	Talman Energy Norge AS	093 I	6028	Statoil Petroleum AS	170 D	2012	Statoil Petroleum AS	303 Z	156, 156A, 156B, 156C	Statoil Petroleum AS	424	68810, 68810A, 68810B, 68810C, 68810D, 68810E, 68810F, 68810G, 68810H, 68810I, 68810J, 68810K, 68810L, 68810M, 68810N, 68810O, 68810P, 68810Q, 68810R, 68810S, 68810T, 68810U, 68810V, 68810W, 68810X, 68810Y, 68810Z, 68810AB	Centrica Reservoir Norge AS	518	2013, 2010, 307	Wintershall Norge ASA</