

Schematic and generalised cross-section of the Norwegian Sea shelf including the main results of the strontium isotope analyses

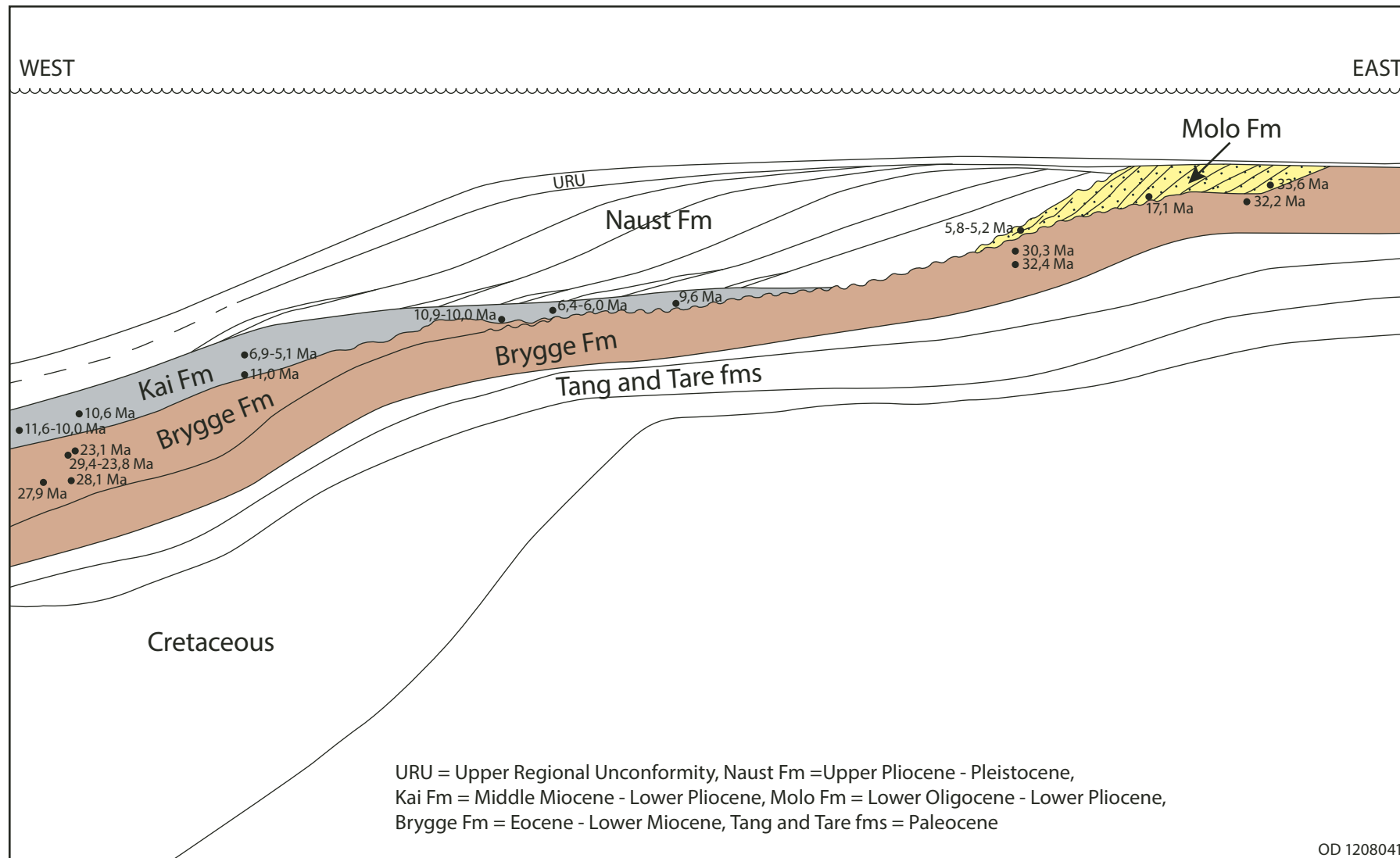


Fig.4: Schematic and generalised cross-section of the Norwegian Sea shelf (modified after Henriksen et al., 2005) including main results of the strontium isotope analyses based on fossil tests interpreted to be in situ (after Eidvin et al. work in progress a).

References

Eidvin, T., Dybkjær, K., Piasecki, S. & Rasmussen, E. S., work in progress a: Strontium isotope stratigraphy based on analyses of mollusc tests from the Upper Oligocene-Miocene succession in Denmark with correlation to the Norwegian continental shelf.

Henriksen, S., Ficher, C., Grønlie, A., Henningsen, T., Laursen, I., Løseth, H., Ottesen, D. & Prince, I., 2005: The Norwegian Sea during the Cenozoic. In B.T.G. Wandaas et al. (eds.): Onshore-Offshore Relationships on the North Atlantic Margin. NPF Special Publication 12, 111-133.