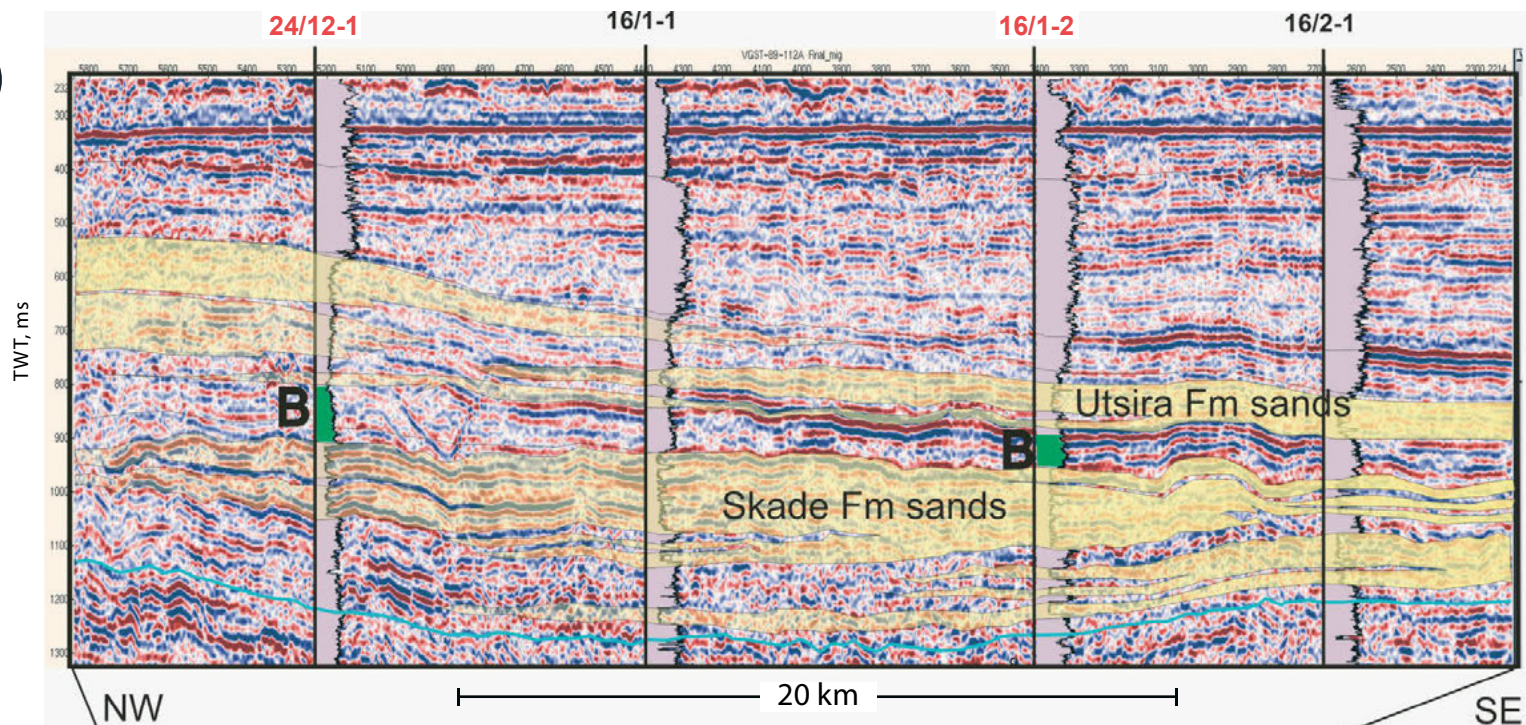
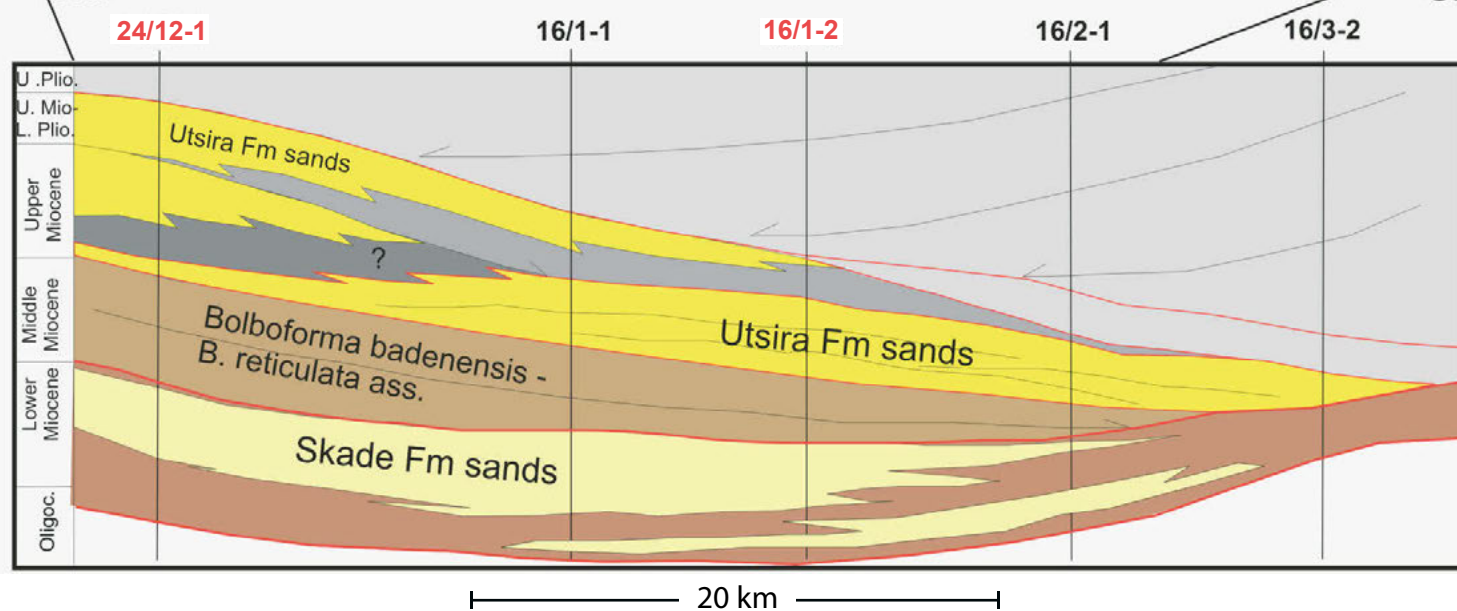


(a)



(b)



**Profile 5:** (a) Seismic line through wells 24/12-1, 16/1-1, 16/1-2 and 16/2-1 across the southern Viking Graben showing the Skade and Utsira formations. Green-coloured part of gamma ray logs denotes Middle Miocene *Bolboforma badenensis* and *Bolboforma reticulata* assemblages. (b) Interpretation of seismic line shown in Profile 5 (a) (extended towards east through well 16/3-2 (not investigated)) illustrating Middle Miocene strata onlapping the top Lower Miocene surface (Mid-Miocene unconformity) to the east (see also Map 1 for location, after Rundberg & Eidvin 2005). The investigated wells 24/12-1 and 16/1-2 have red numbers.

Reference: Rundberg, Y. & Eidvin, T., 2005: Controls on depositional history and architecture of the Oligocene-Miocene succession, northern North Sea Basin. In B.T.G. Wandaas et al. (eds.): Onshore-Offshore Relationships on the North Atlantic Margin. NPF Special Publication 12, 207-239.

