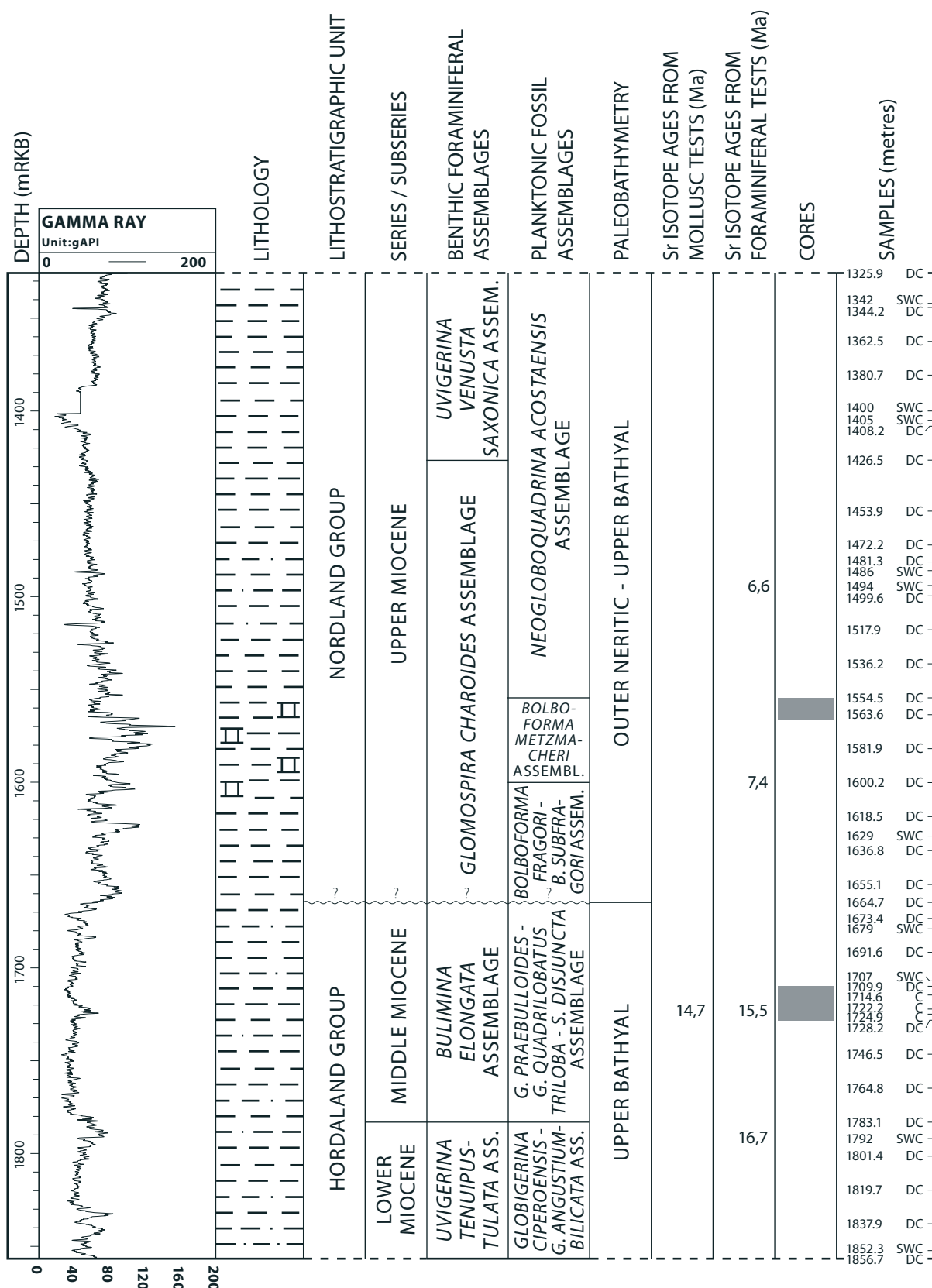


# WELL 2/4-C-11 (continued)



Sea floor = 106 metres below rig floor (mRKB)

OD 1206031

DC = Ditch cuttings

gAPI = American Petroleum Institute gamma ray units

SWC = Side-wall core

II = Limestone

**Fig. 2:** Well summary figure including gamma ray log, lithology, lithostratigraphic units, series/subseries, benthic foraminiferal assemblages, planktonic fossil assemblages, paleobathymetry, strontium isotope ages and analysed samples for the middle part of the investigated sequence in well 2/4-C-11 (Lower to Upper Miocene, modified after Eidvin et al. 1999).