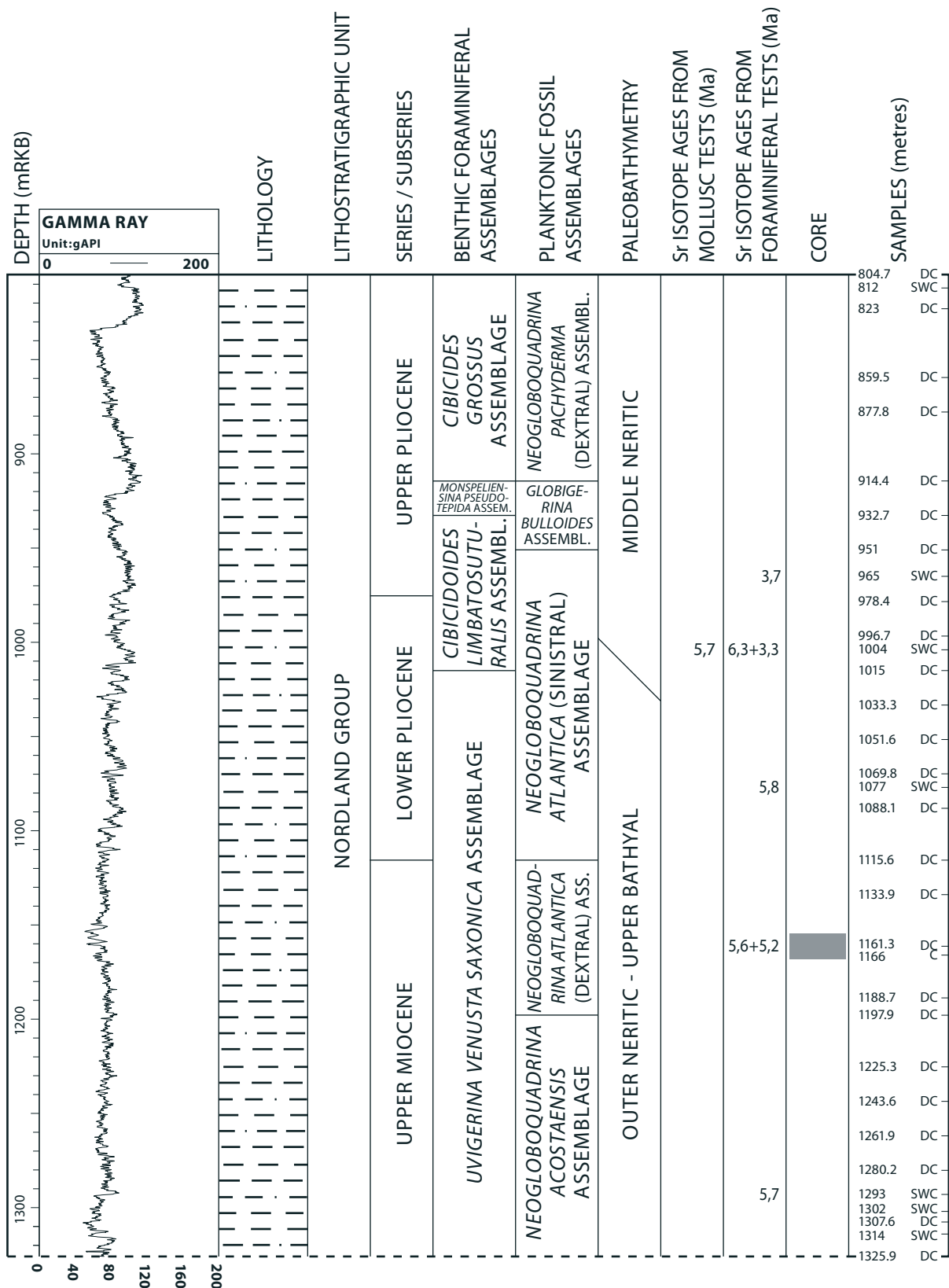


WELL 2/4-C-11 (continued)



Sea floor = 106 metres below rig floor (mRKB)

OD 1206032

DC = Ditch cuttings

gAPI = American Petroleum Institute gamma ray units

SWC = Side-wall core

Fig. 3: Well summary figure including gamma ray log, lithology, lithostratigraphic units, series/subseries, benthic foraminiferal assemblages, planktonic fossil assemblages, paleobathymetry, strontium isotope ages and analysed samples for the upper part of the investigated sequence in well 2/4-C-11 (Upper Miocene to Upper Pliocene, modified after Eidvin et al. 1999).