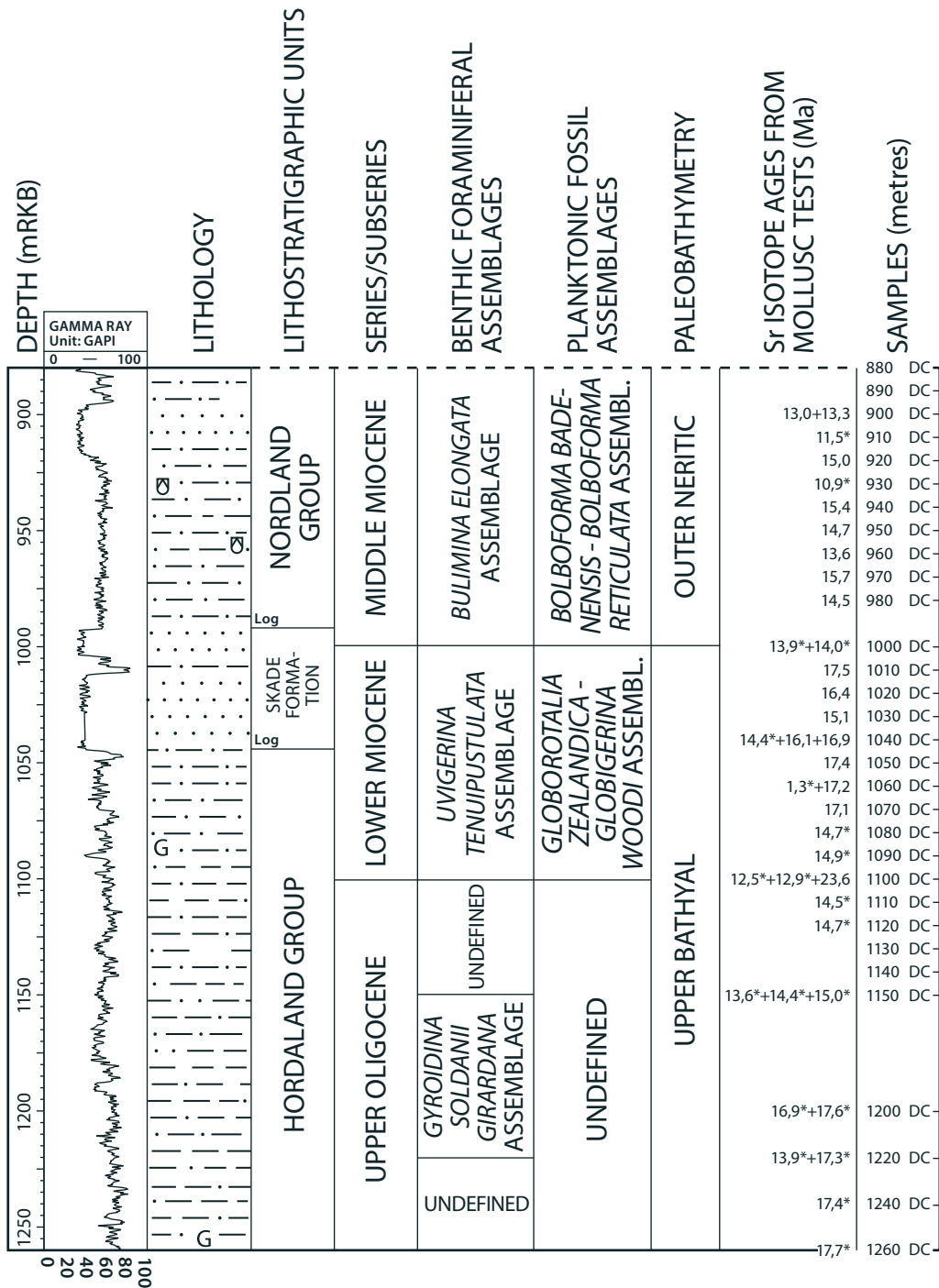


# WELL 30/5-2



OD 1208015

- Sea floor = 252 metres below rig floor
- GAPI = American Petroleum Institute gamma ray units
- DC = Ditch cuttings
- G = Abundant glauconite
- ☉ = Abundant molluscs and mollusc fragments
- \* = Caved

**Fig. 1:** Well summary figure including gamma ray log, lithology, lithostratigraphic units, series/subseries, benthic foraminiferal assemblages, planktonic fossil assemblages, paleobathymetry, strontium isotope ages and analysed samples for the lower part of the investigated sequence in well 30/5-2 (Upper Oligocene to Middle Miocene).