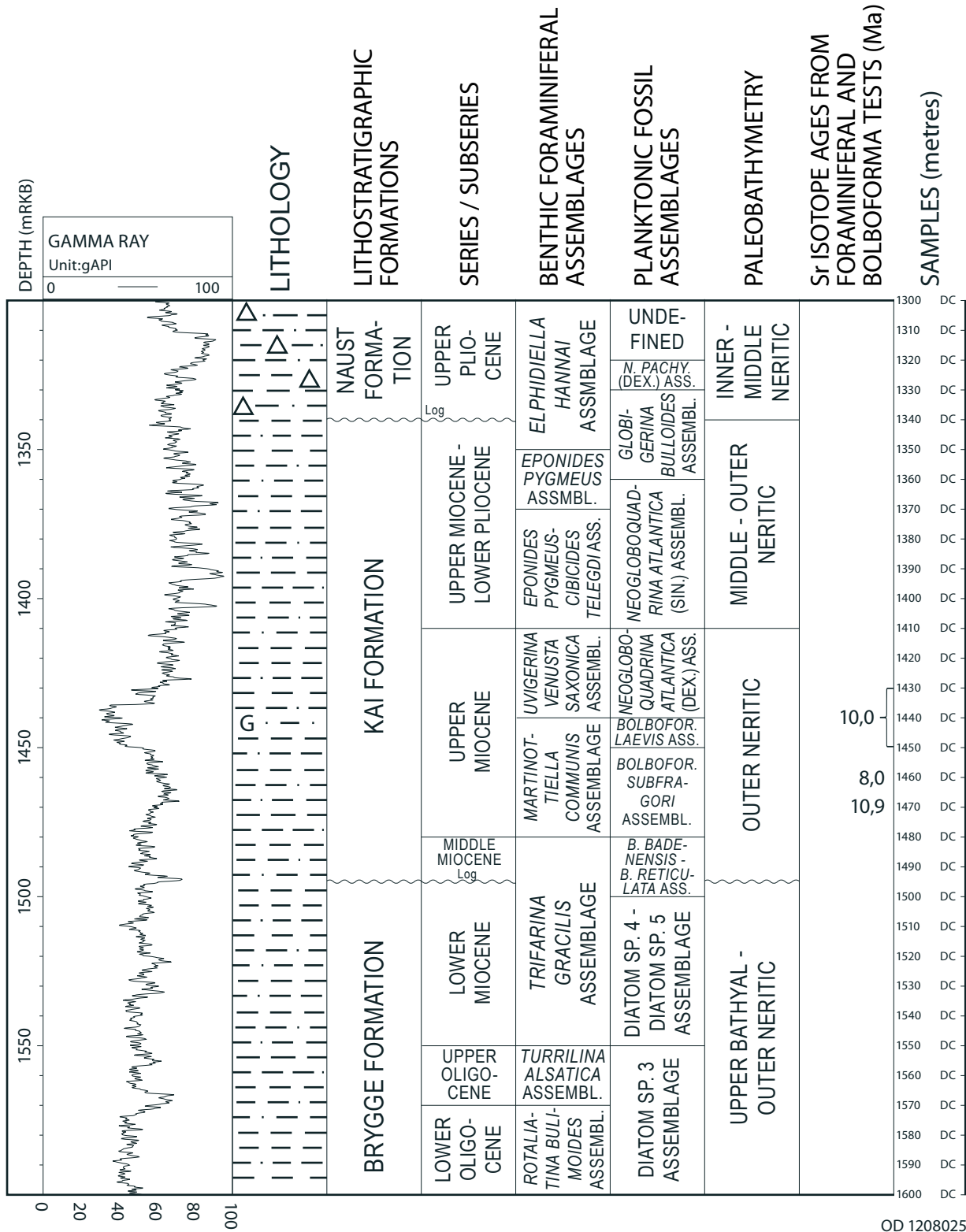


# WELL 6507/12-1



Sea floor = 250 metres below rig floor (mRKB)  
 DC = Ditch cuttings  
 gAPI = American Petroleum Institute gamma ray units  
 G = Abundant glauconite  
 △ = Ice-rafted pebbles

**Fig. 1:** Well summary figure for the Lower Oligocene to Upper Pliocene in well 6507/12-1 including gamma ray log, lithology, lithostratigraphic formations, series/subseries, benthic foraminiferal assemblages, planktonic fossil assemblages, paleobathymetry, strontium isotope ages and analysed samples.