

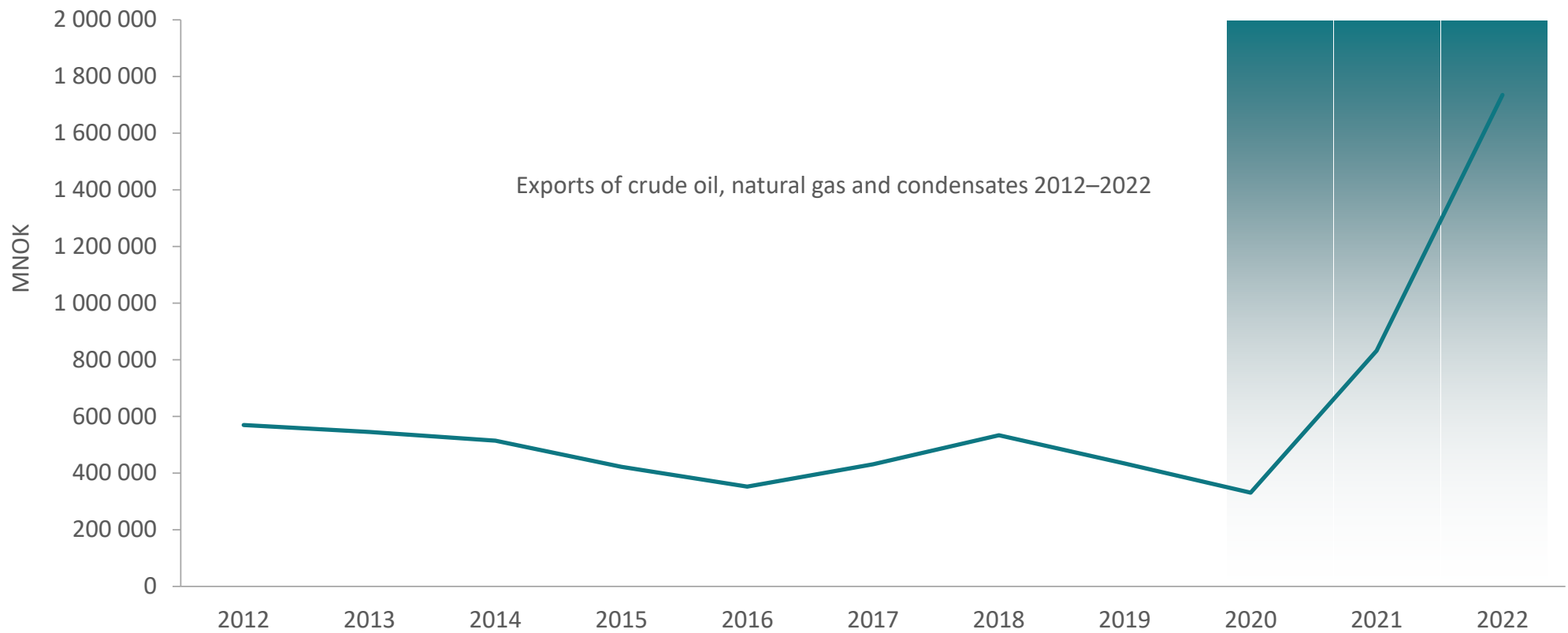


NORWEGIAN PETROLEUM
DIRECTORATE

THE SHELF 2022

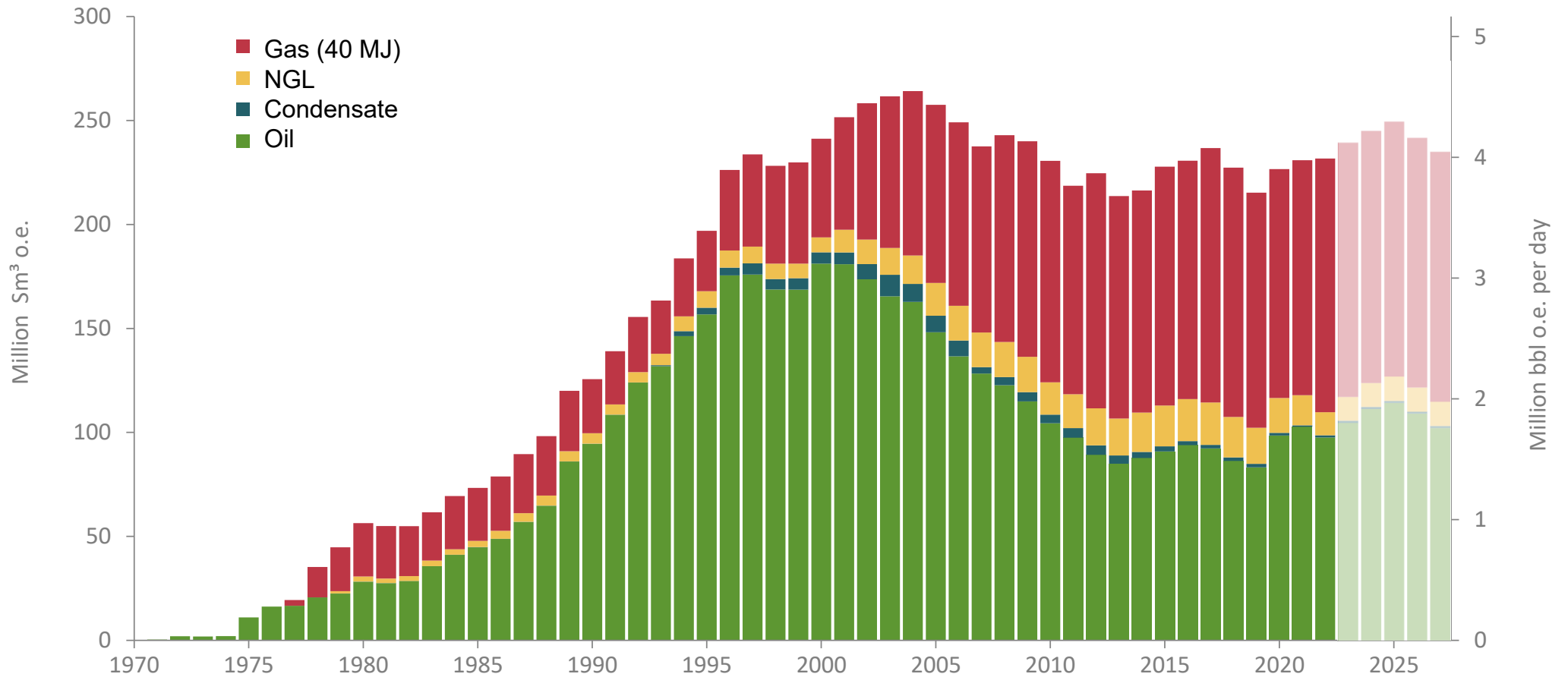


Record value creation from the Shelf

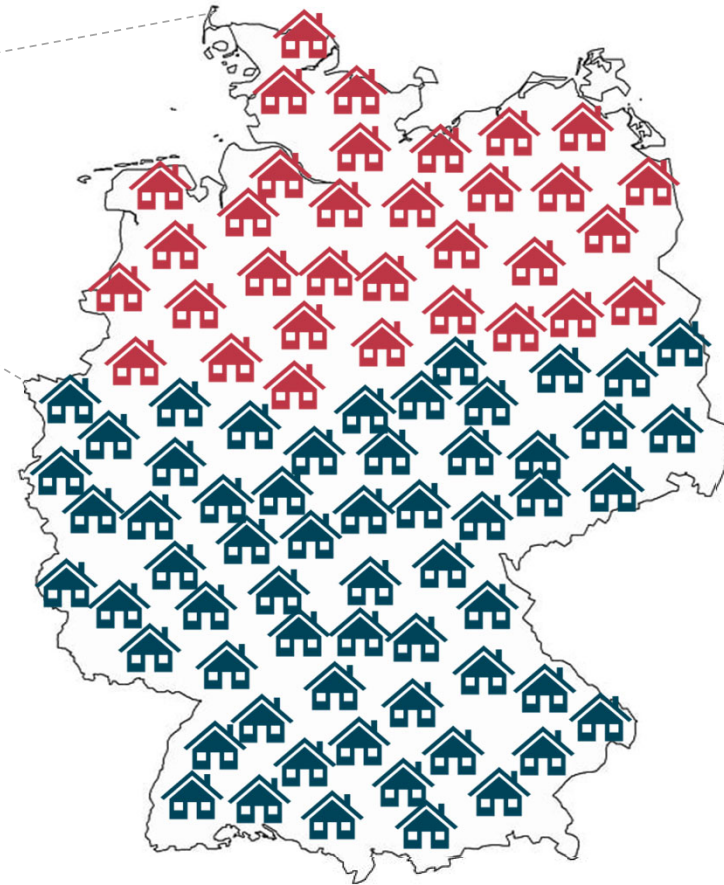
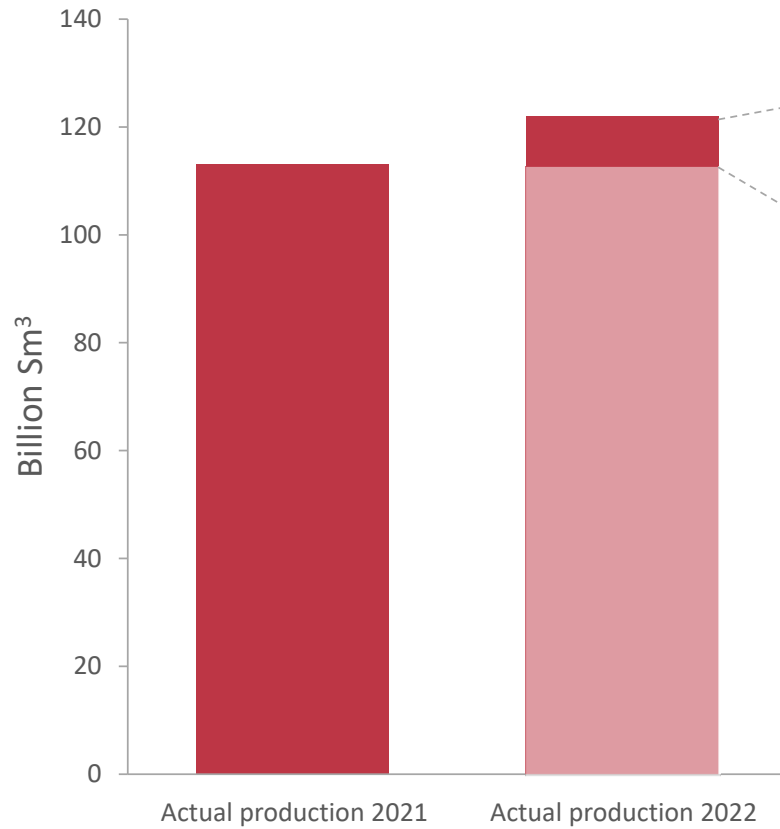


Source: SSB

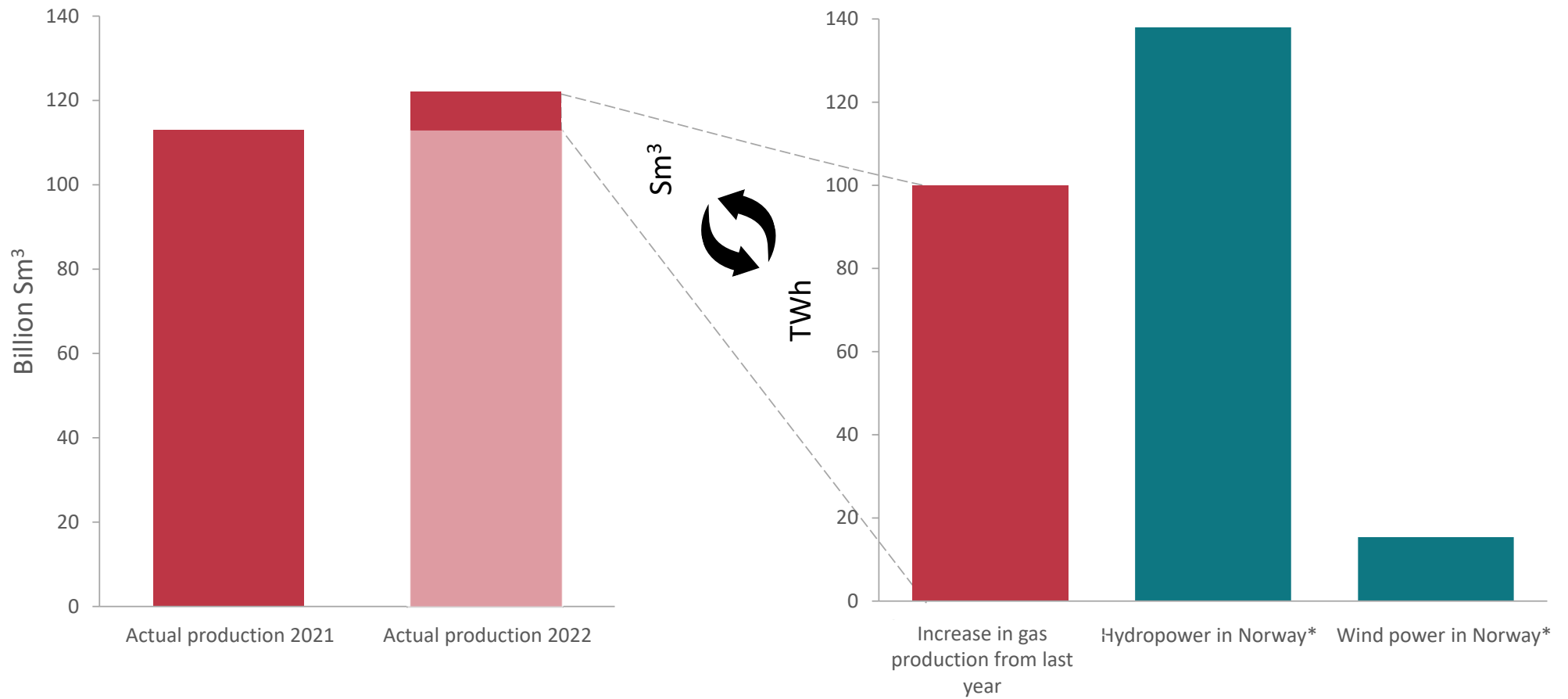
High production levels over the next few years



Europe's largest gas supplier



Europe's largest gas supplier

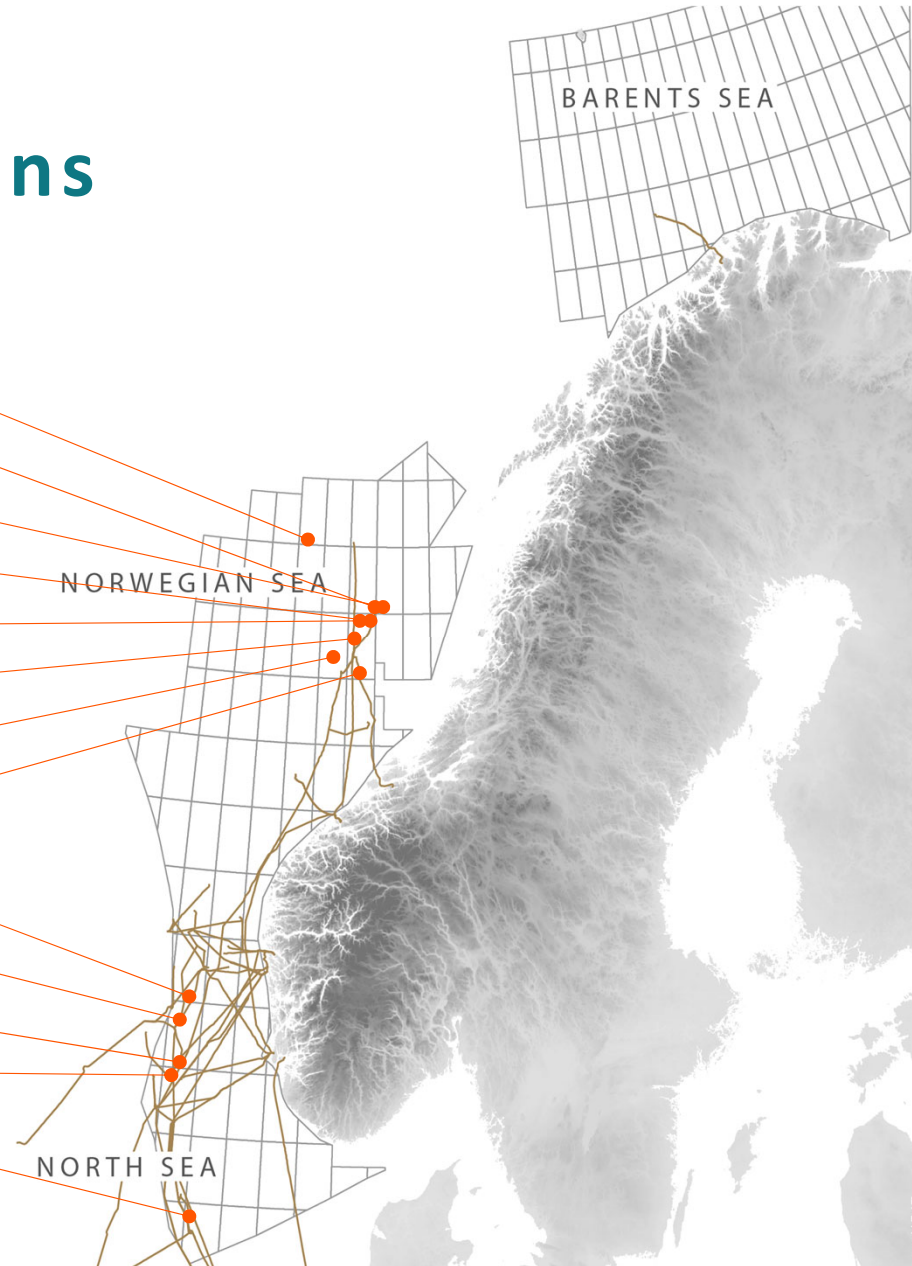


*Source: NVE

Many new development plans

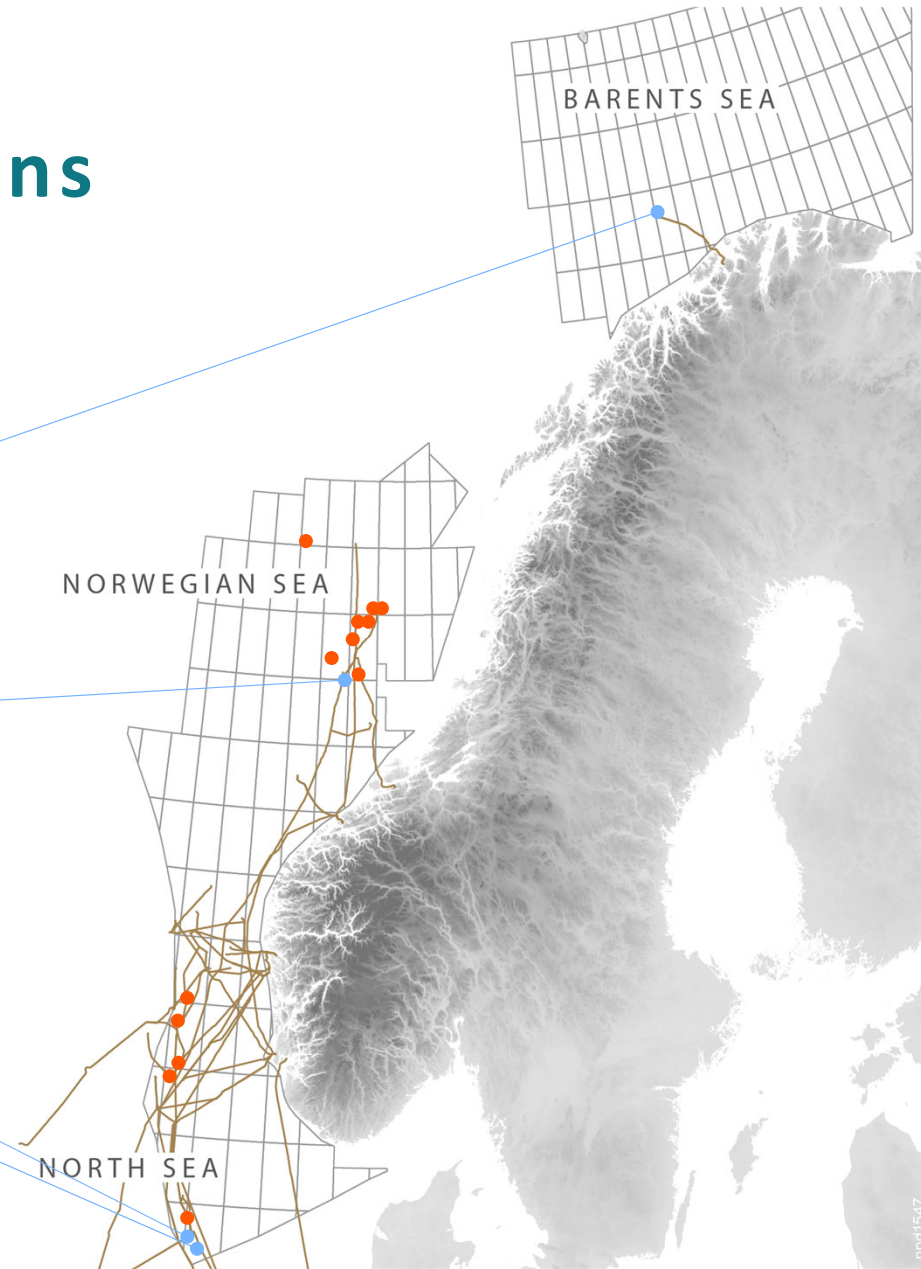
New field developments

- Irpa
- Alve Nord
- Verdande
- Idun Nord
- Ørn
- Dvalin Nord
- Berling
- Halten Øst
- Yggdrasil
- Trine & Trell
- Symra
- Troldhaugen
- Fenris



Many new development plans

- New field developments**
 - Irpa
 - Alve Nord
 - Verdande
 - Idun Nord
 - Ørn
 - Dvalin Nord
 - Berling
 - Halten Øst
 - Yggdrasil
 - Trine & Trell
 - Symra
 - Troldhaugen
 - Fenris
- Improved recovery/extended lifetimes on existing fields**
 - Snøhvit Future
 - Maria phase 2
 - Eldfisk Nord
 - Valhall PWP



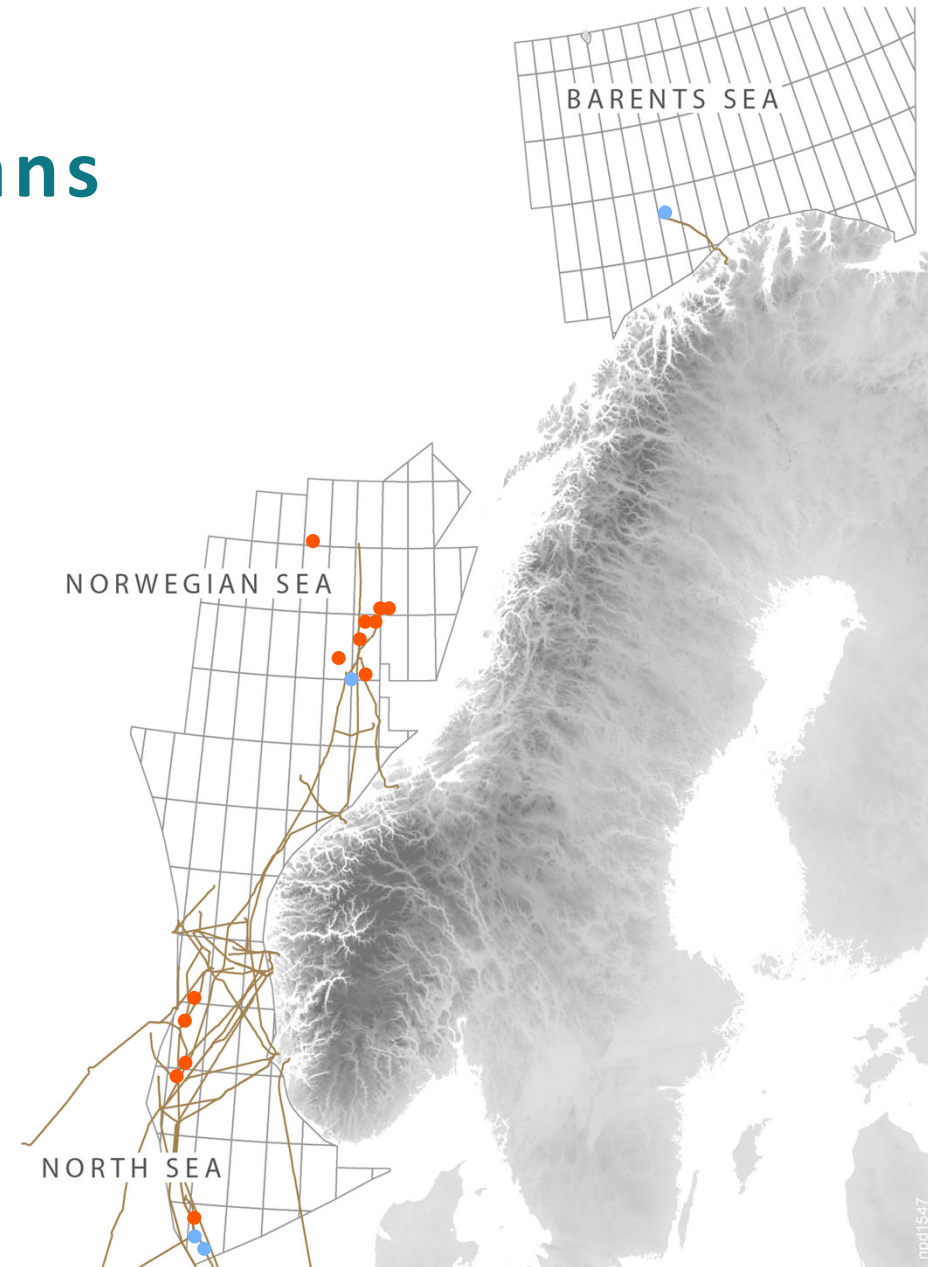
Many new development plans

Improved recovery/
extended lifetimes
on existing fields

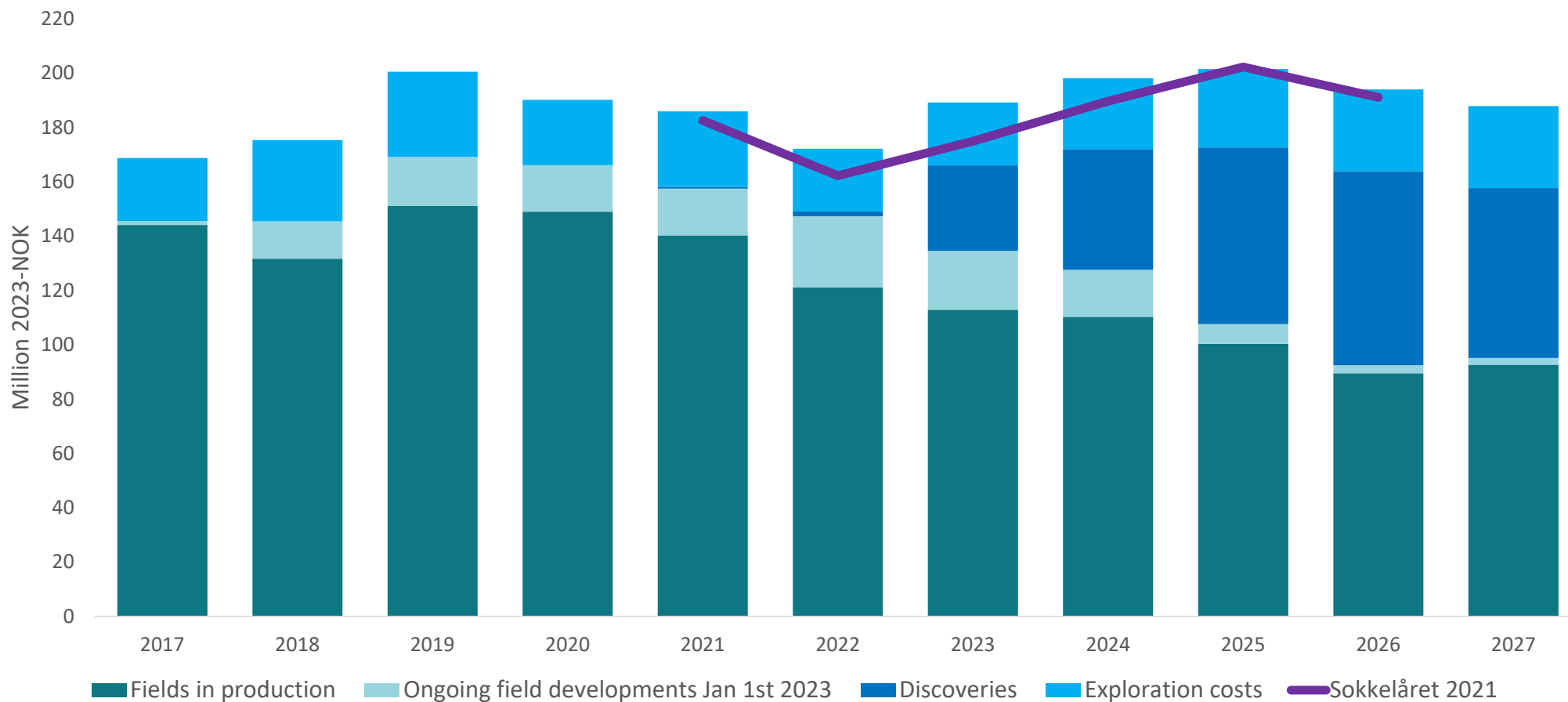
Snøhvit Future
Maria fase 2
Eldfisk Nord
Valhall PWP

New field
developments

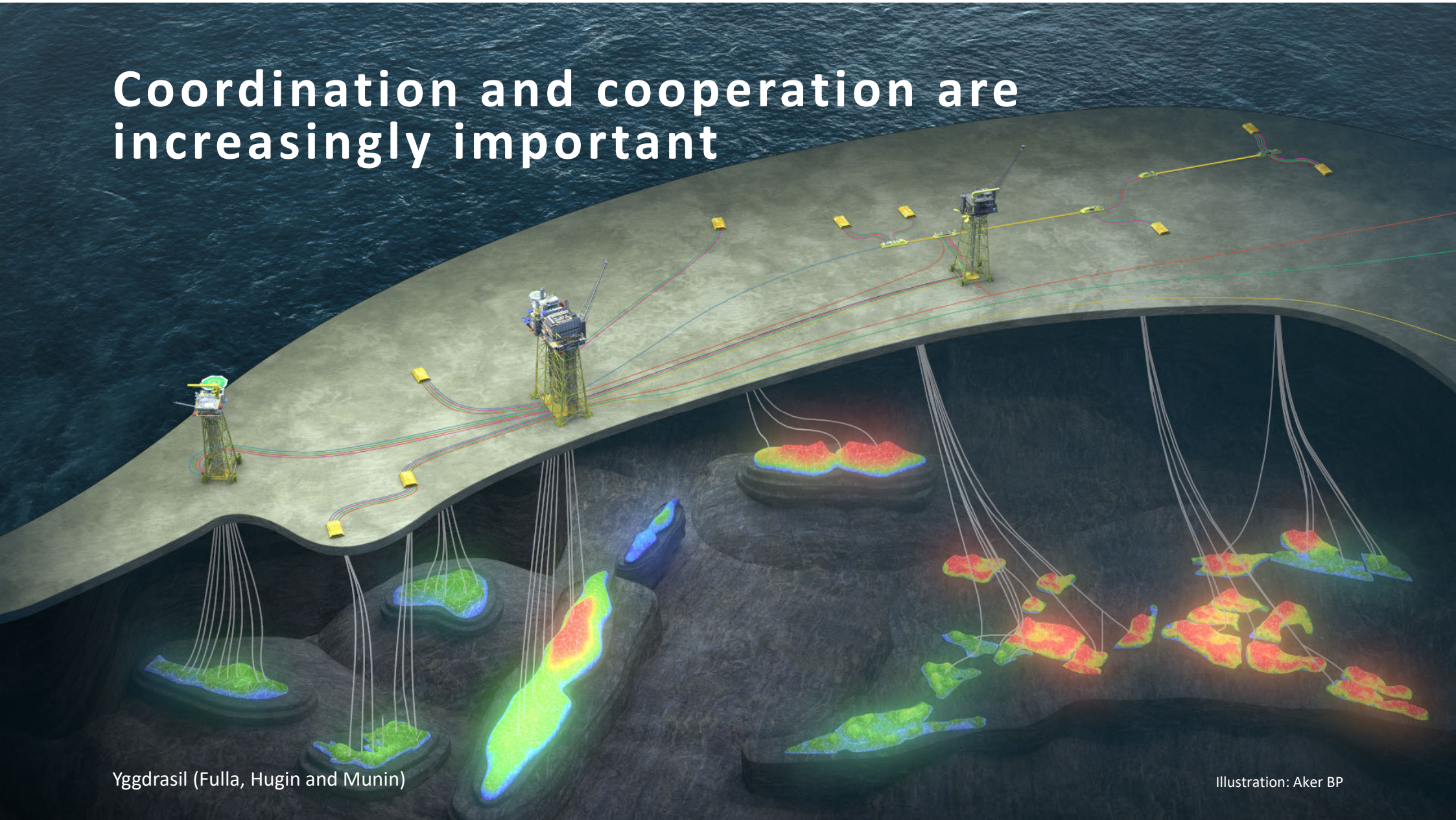
Irpa
Alve Nord
Verdande
Idun Nord
Ørn
Dvalin Nord
Berling
Halten Øst
Yggdrasil
Trine & Trel
Symra
Troidhaugen
Fenris



Investment levels remain stable



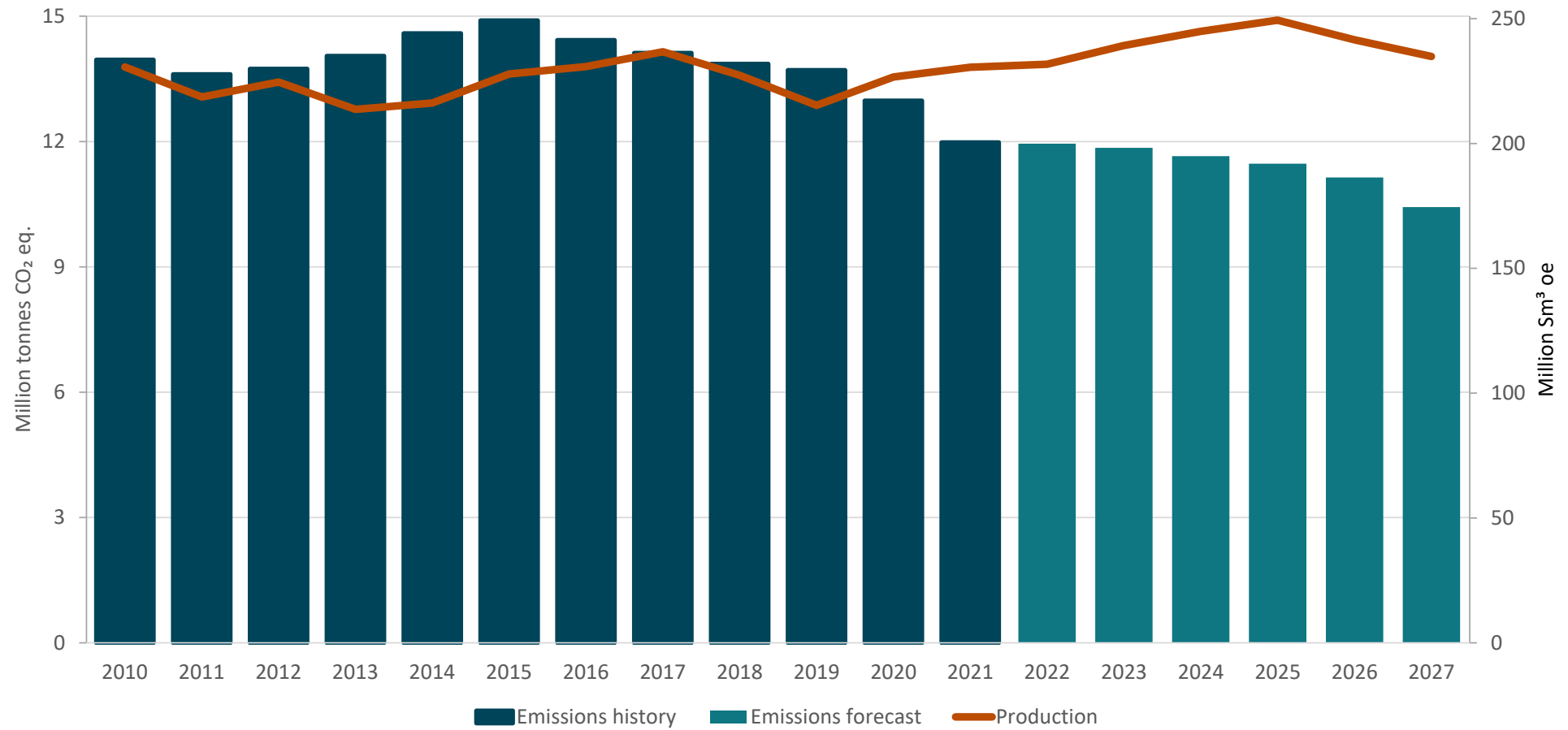
Coordination and cooperation are increasingly important



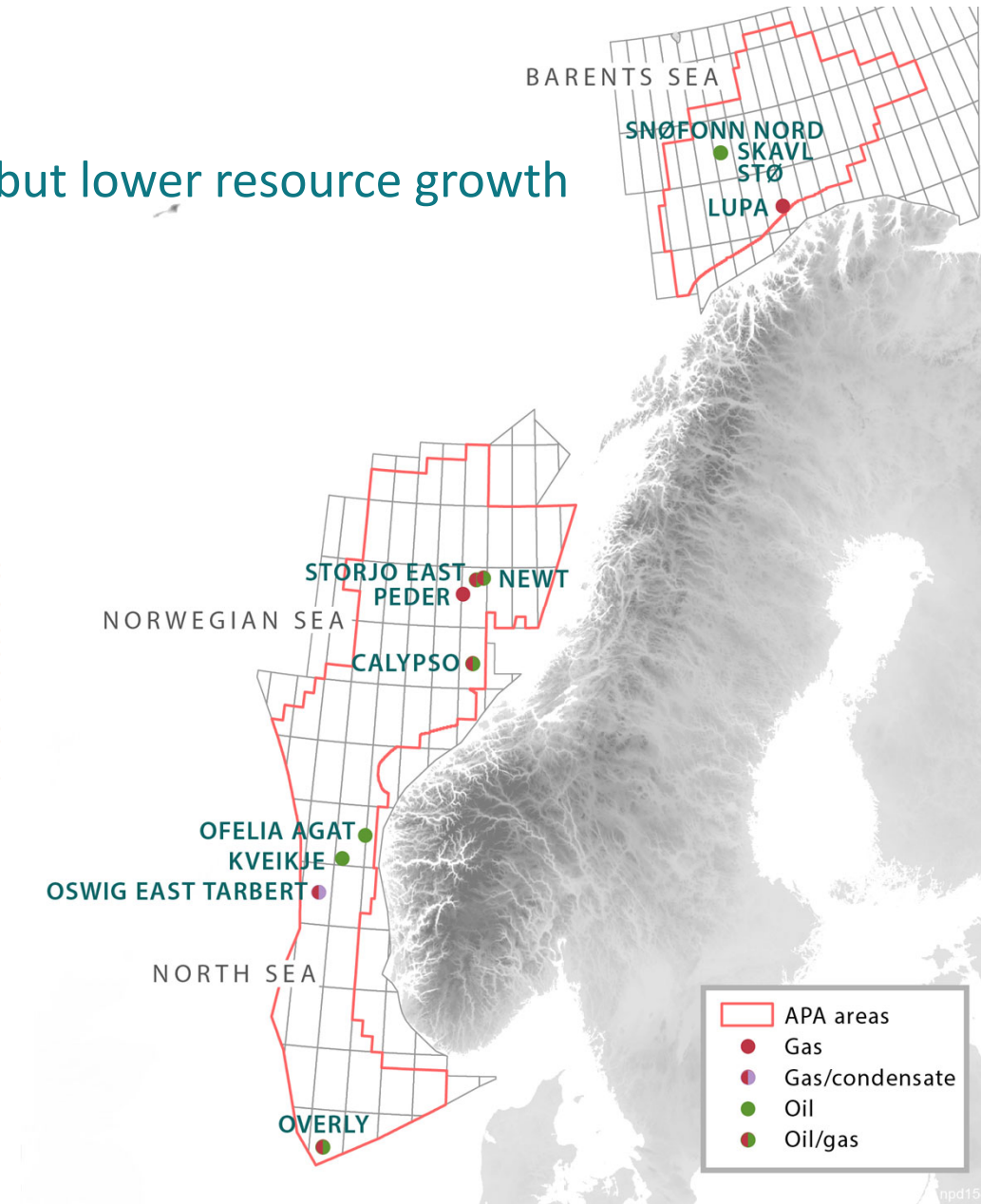
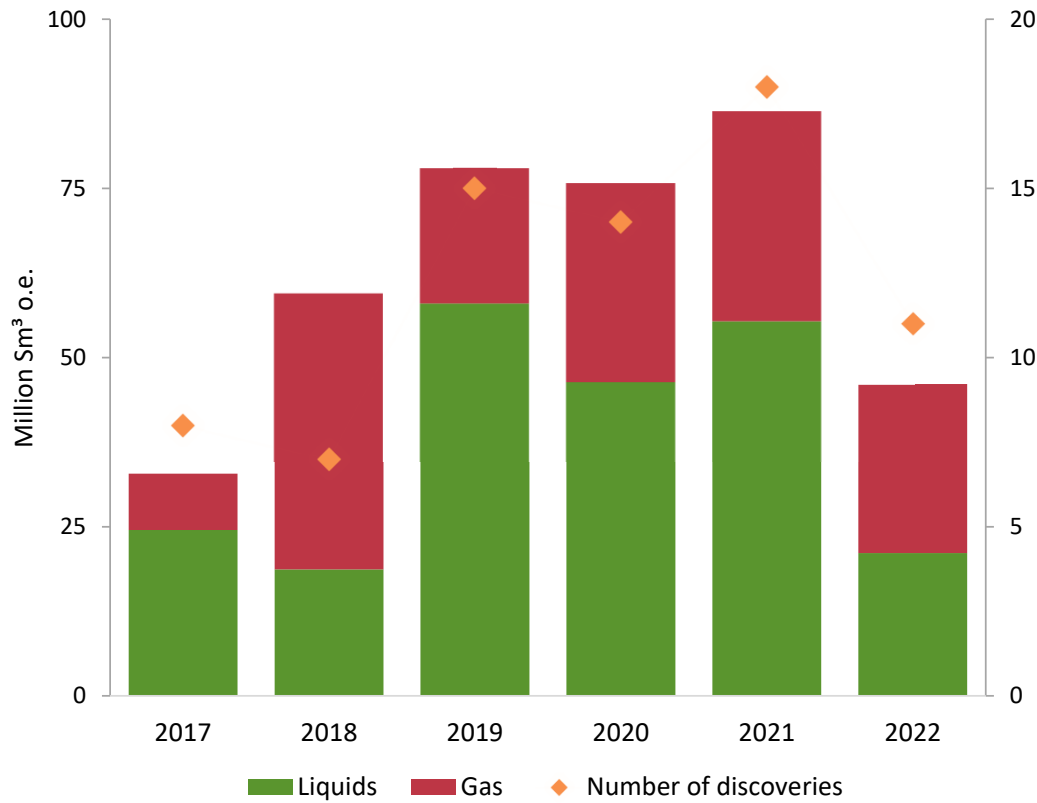
Yggdrasil (Fulla, Hugin and Munin)

Illustration: Aker BP

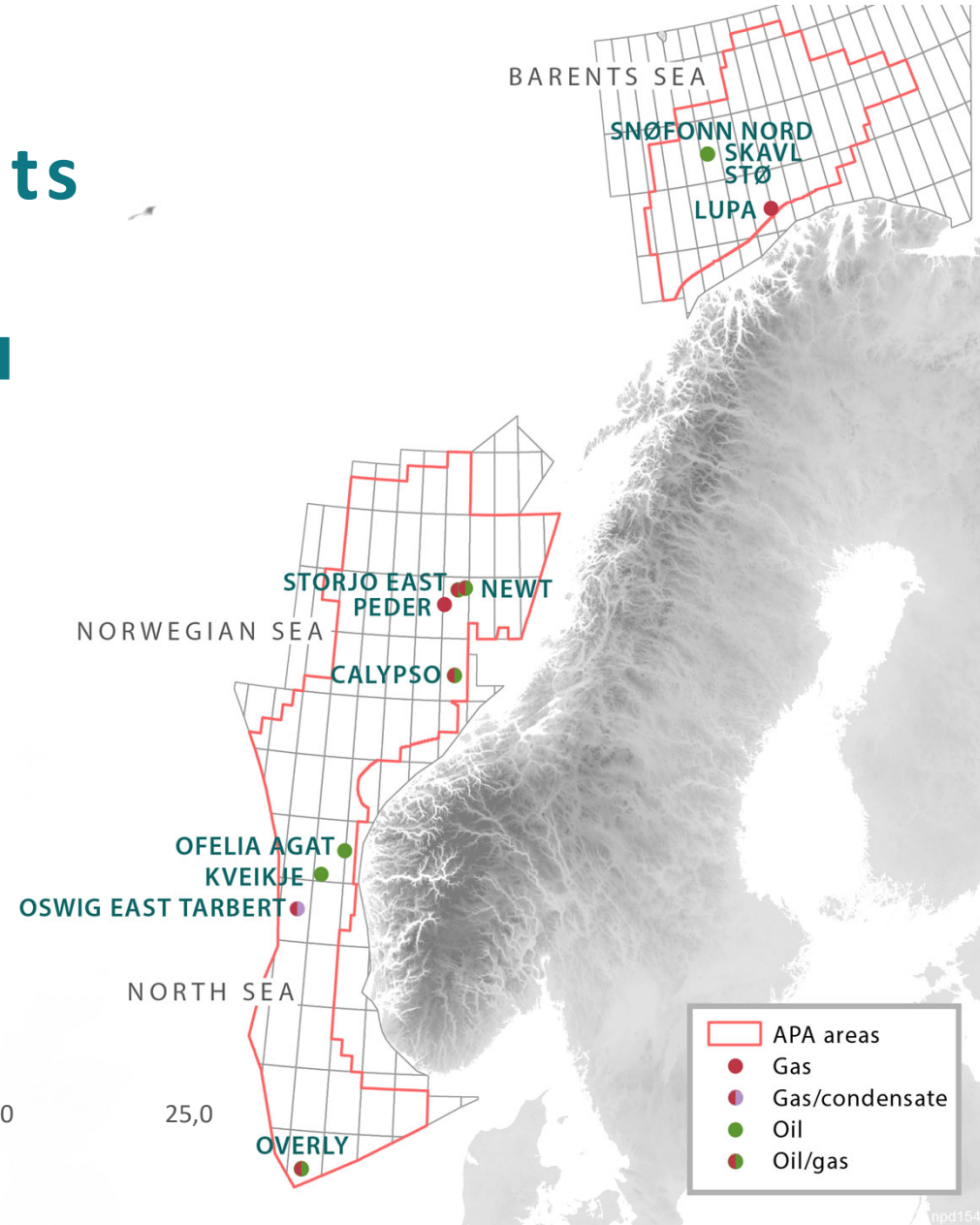
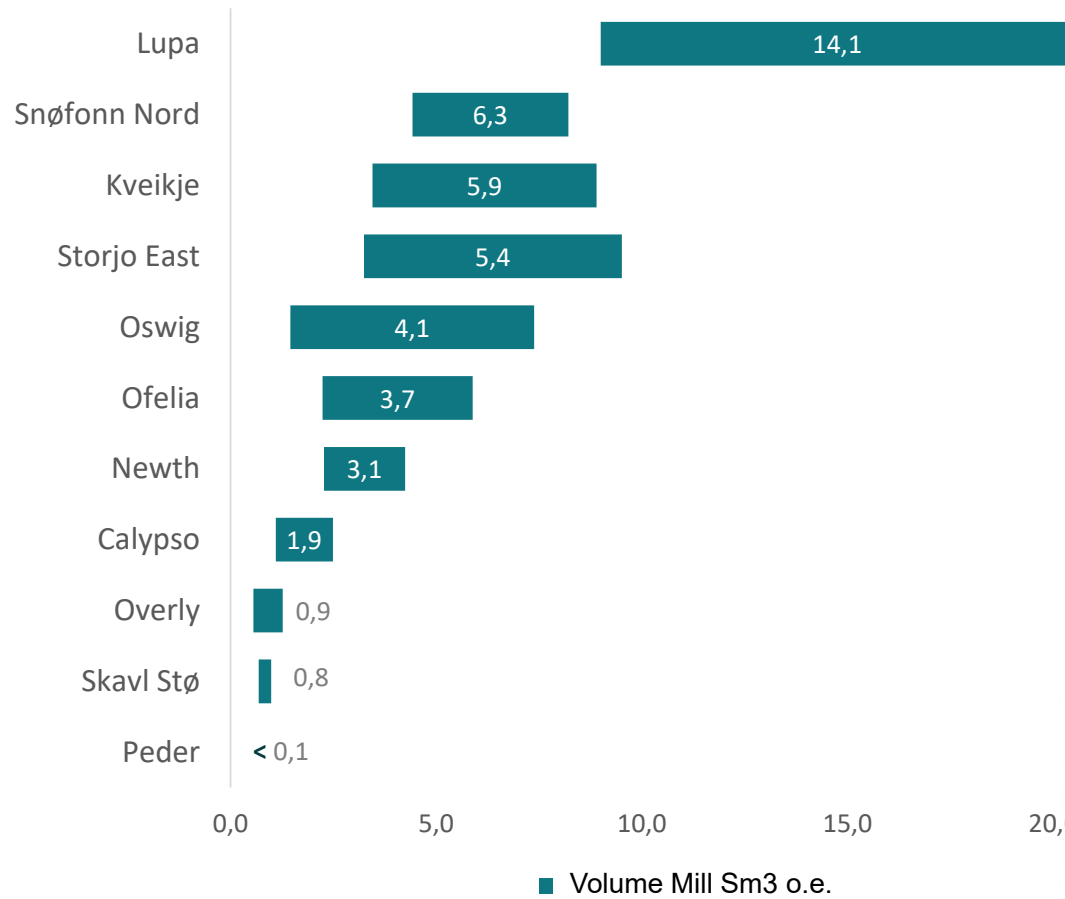
Emissions are coming down



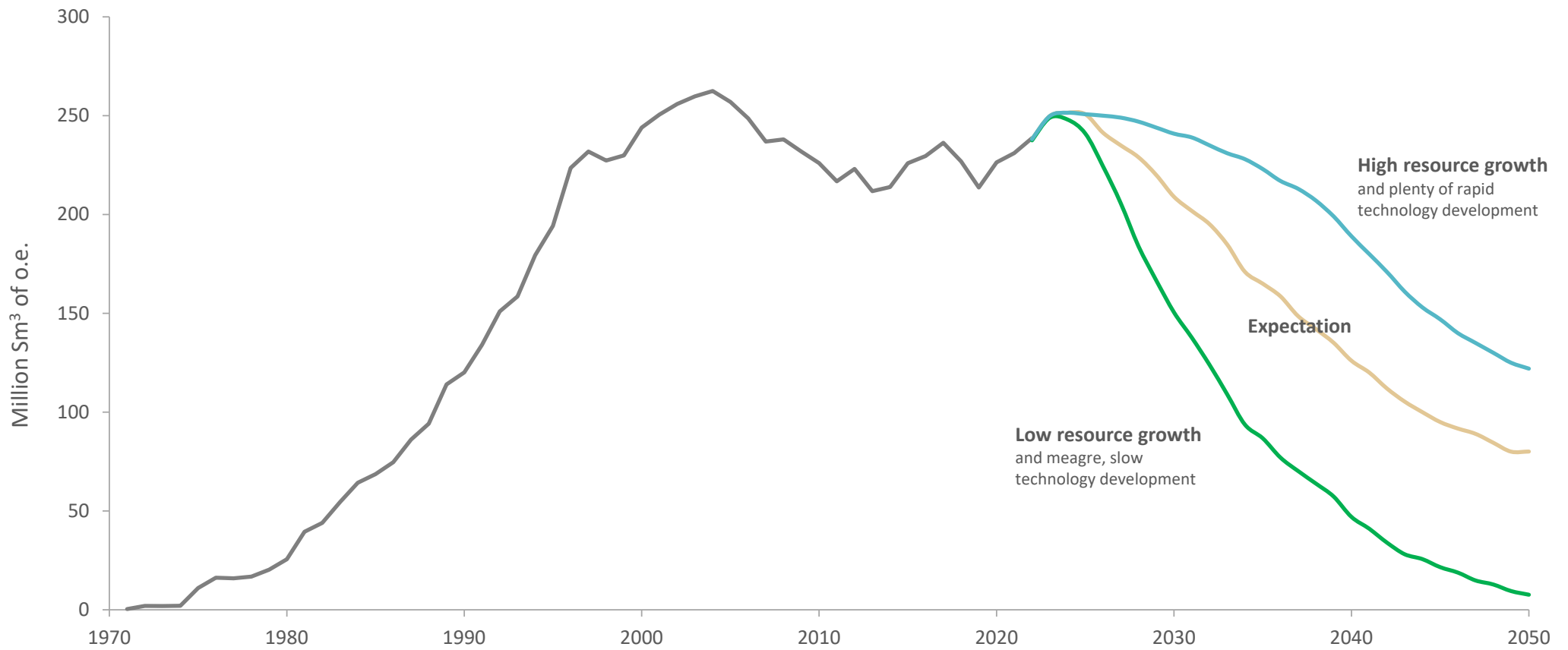
High rate of discoveries but lower resource growth



Exciting exploration results



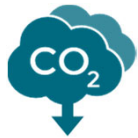
Future scenarios for oil and gas production



Management areas are expanding



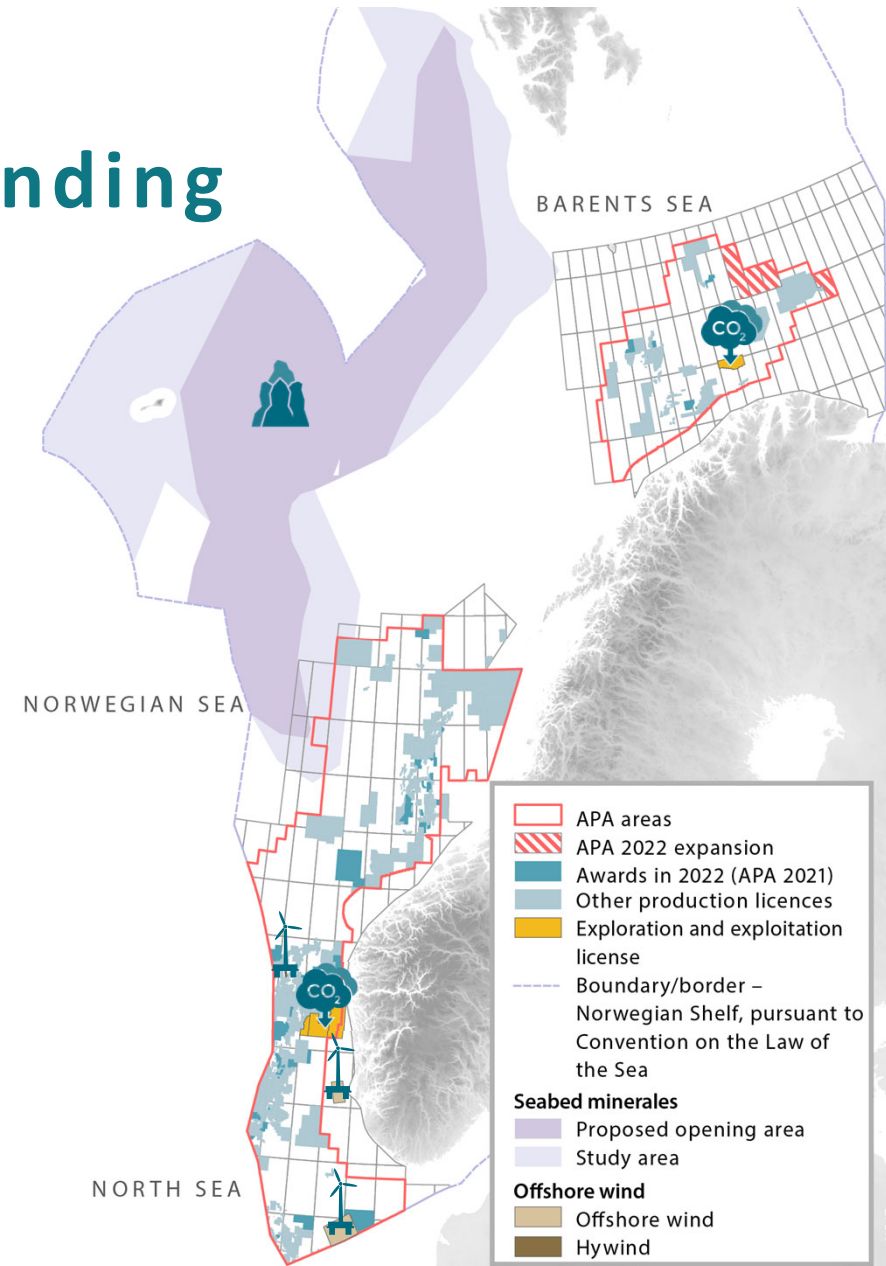
Offshore wind



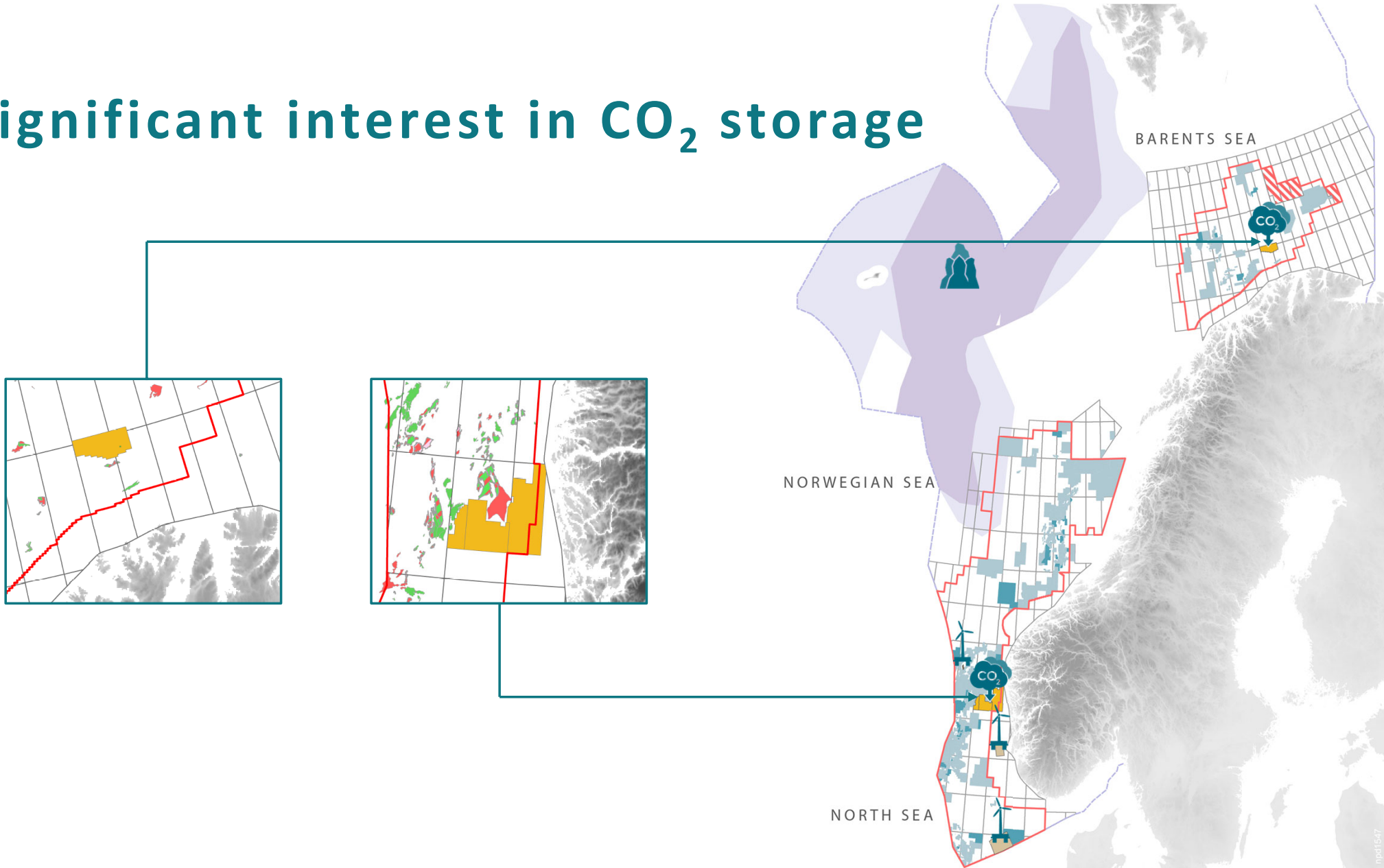
Storing CO₂



Seabed minerals



Significant interest in CO₂ storage



Seabed minerals

Sound decision-making basis for the opening process

