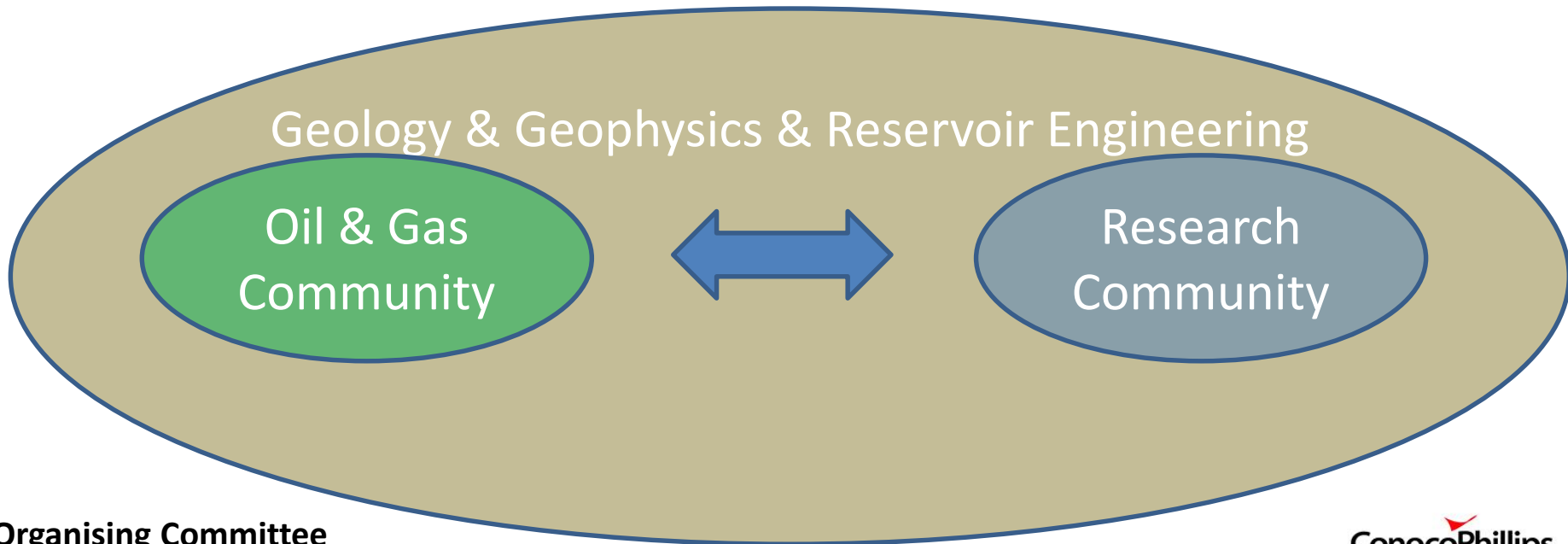


Joining Forces Seminar – Feb 2-3 2016



Organising Committee

Tim Austin – ConocoPhillips
Hans-Oddvar Augedal – Lundin
Etienne Reding – Repsol
Elizabeth Femsteinevik – Faroe
Saeed Fallah – Wintershall
Alejandro Escalona – UiS
Janne Puntervold – NPD / Force
Tone Helene Mydland – NPD / Force



**ConocoPhillips**

**REPSOL**

Sponsored by:

**Lundin**
Norway

**wintershall**

Rømningsplan / Evacuation Plan

Prof Olav Hanssens vei 10
3. etasje - Vallhall

SYMBOLFORKLARING

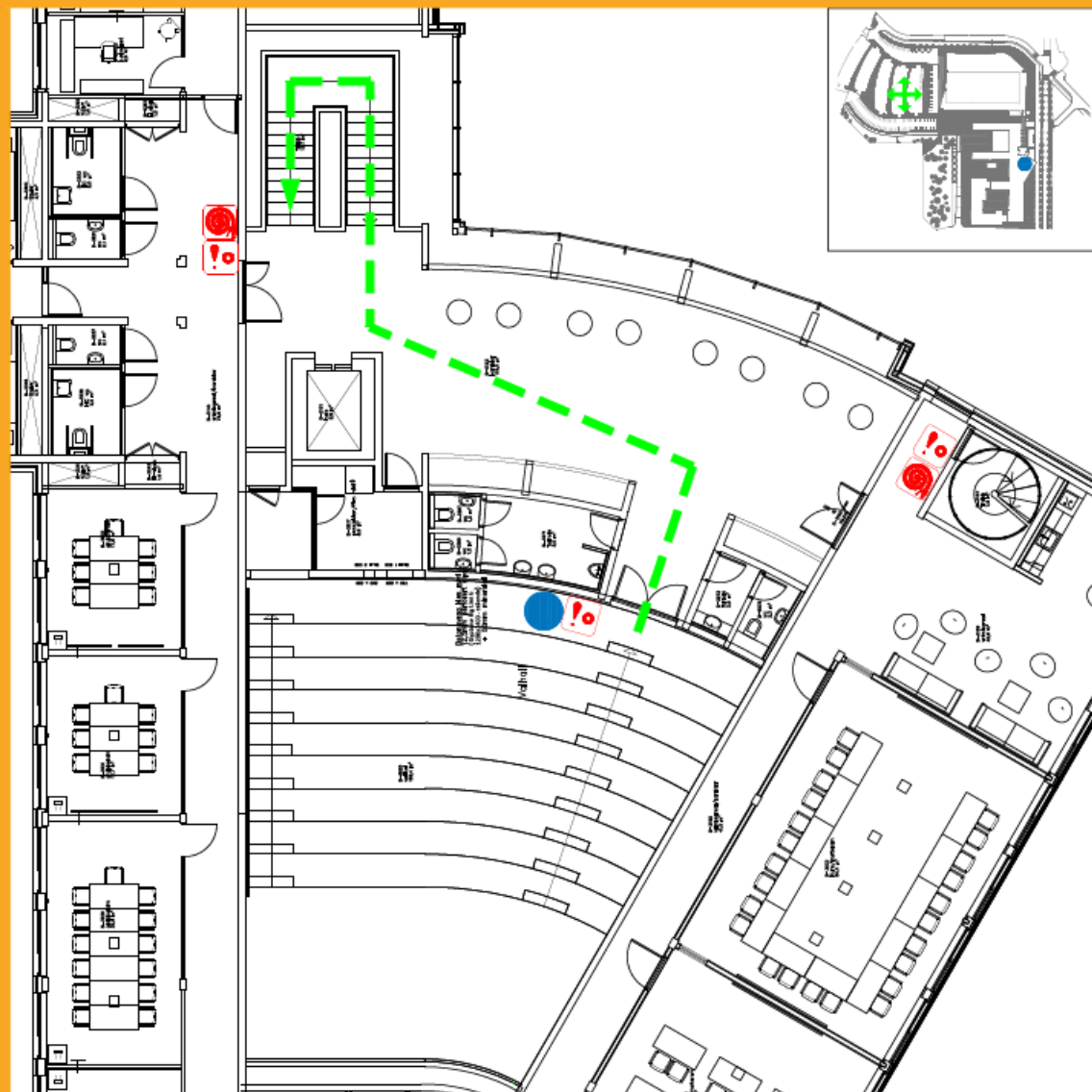
DU STÅR HER		YOU ARE HERE
RØMNINGSVEI		ESCAPE ROUTE
BRANNSLANGE		FIRE HOSE
MANUELL MELDER		CALL POINT
MØTEPlass		ASSEMBLY POINT

Branninstruks

Gjør deg kjent med brannslukningsutstyr, rømningsveier og manuelle brannmeldere. Ved ethvert tillegg til brann skal du:

- VARSELE** Dersom du oppdager brann: utløs manuell brannmelder og ring brannvesen
- REDDE** Gå til nærmeste nødutgang og ta med eventuelle besøkende
- SLUKKE** Forsøk å slukke med brannslukkeutstyr om mulig og lukk dører inn mot brannrommet

NØDTELEFON BRANNVESEN: **110**
NØDTELEFON POLITI: **112**
NØDTELEFON MED. NØDHJELP: **113**



Rømningsplan / Evacuation Plan

Prof Olav Hanssens vei 10
2. etasje - Vallhall

SYMBOLFORKLARING

DU STÅR HER		YOU ARE HERE
RØMNINGSVEI		ESCAPE ROUTE
BRANNSLANGE		FIRE HOSE
MANUELL MELDER		CALL POINT
MØTEPlass		ASSEMBLY POINT

Branninstruks

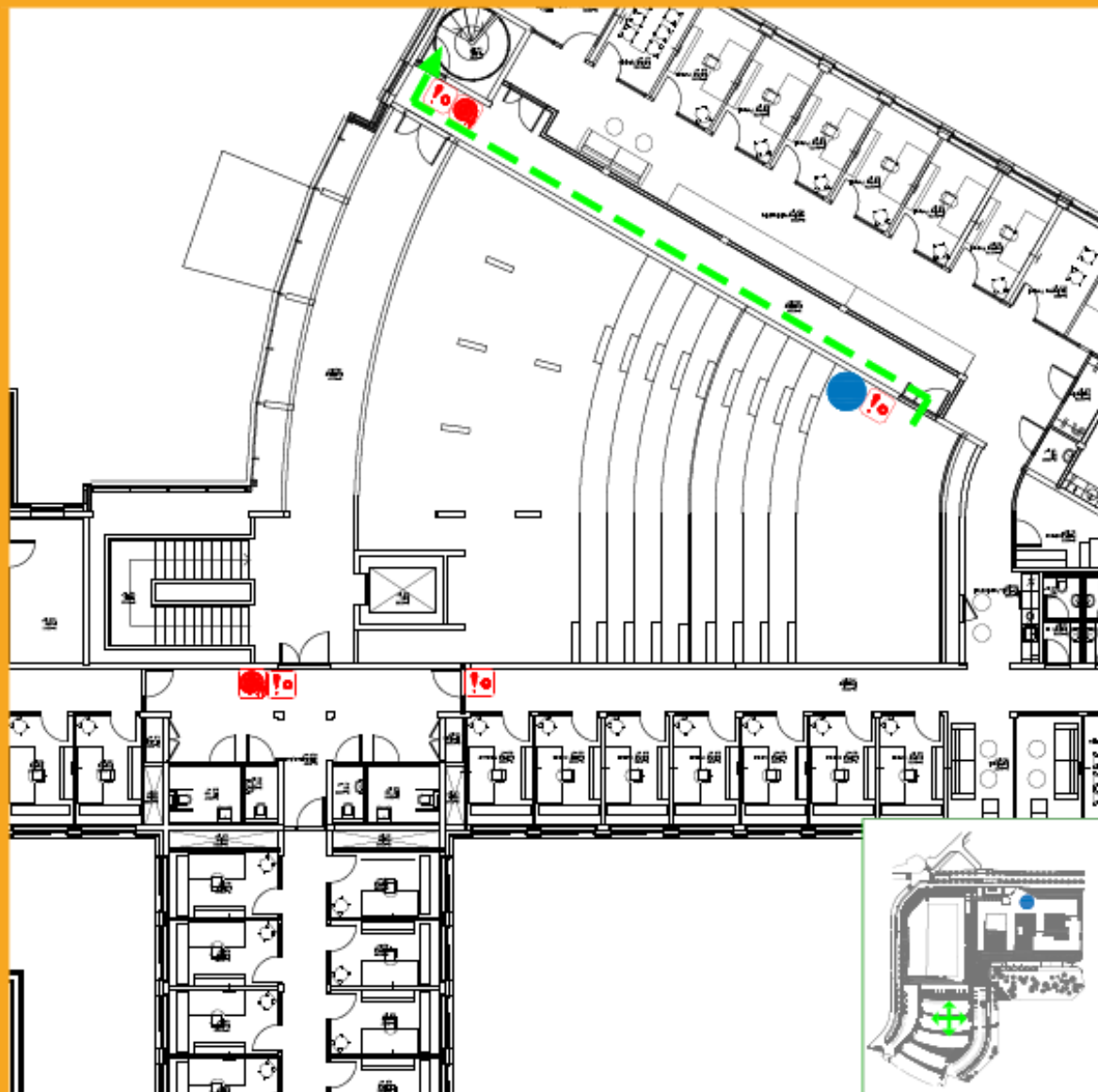
Gjør deg kjent med brannslukningsutstyr, rømningsveier og manuelle brannmeldere. Ved ethvert tillop til brann skal du:

- VARSLER** Dersom du oppdager brann: utløs manuell brannmelder og ring brannvesen
- REDDE** Gå til nærmeste nødutgang og ta med eventuelle besøkende
- SLUKKE** Forsøk å slukke med brannslukkeutstyr om mulig og lukk dører inn mot brannrommet

NØDTELEFON BRANNVESEN: **110**

NØDTELEFON POLITI: **112**

NØDTELEFON MED. NØDHJELP: **113**





Joining Forces Seminar February 2-3 2016

Invited Participants:

Oil and gas FORCE community



Research community



Others





Joining Forces Seminar – Feb 2-3 2016

Ambitions

- **Stimulate communication with intent of leading to more collaboration and R+D projects**
- **Communicate research and industry perspectives**
- **Get an update on current research activities & understand the strengths of the different Departments & Institutes**



Joining Forces Seminar – Feb 2-3 2016

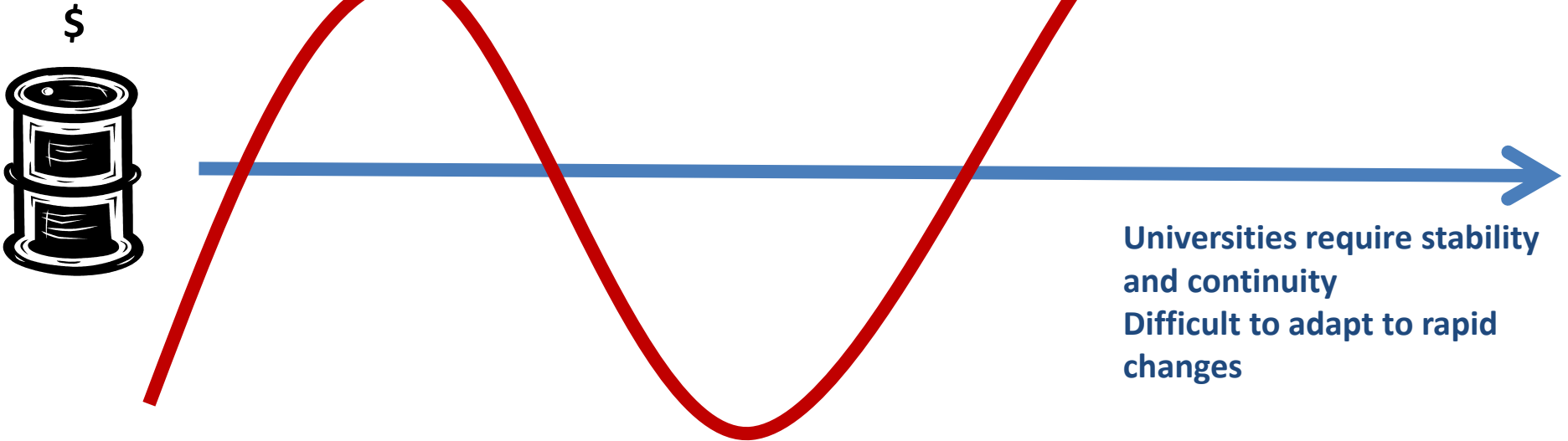
From the previous meeting May 2013

- Well received subject, with support for continued communication in future from both industry & academic communities
- Establish a web-portal in FORCE where research & industry communities can both post their activities & contacts
- Industry should try to define & advertise its main challenges such that academic community can consider how it might react with the aim of stimulating increased project collaboration
 - Suggest FORCE consider this at network level
 - Set-up Network-Level discussion forums with research community
 - Consider aiming for bi-annual meeting (s)

A reminder !

Industry: During high oilprice:

- High recruitment
- Investment in universities and institutes
 - Infrastructure
 - Research projects
 - Education



**Universities require stability
and continuity
Difficult to adapt to rapid
changes**

Industry: During low prices

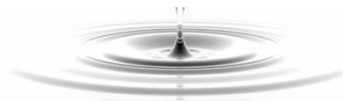
- Low to no recruitment
- Lack of investment in universities
 - Problem to finance infrastructure
 - Limited research
 - Student intake decreases



Joining Forces Seminar – Feb 2-3 2016

Programme

Day 1	Tuesday 2nd Feb
11:45-13:00	Registration and celebratory lunch with cake and coffee (celebrating FORCE being 20 years)
13:00-13:15	Introduction & Ambitions (organizing committee)
13:15-13:35	NPD Perspectives - Bente Nyland
13:35-13:55	Force Overview (Force MC) - Hans-Oddvar Augedal
13:55-14:15	OG21 (Forskningsrådet) - Gunnar Hjelmtveit Lille and Øivind Fevang (Statoil)
14:15-14:45	Coffee Break - Networking and Poster Sessions
14:45-15:05	IOR Centre - Merete Vadla Madland
15:05-15:25	UiS - Skule Strand
15:25-15:45	UiB - Martin Fernø
15:45-16:05	IFE - Christian Dye
16:05-16:35	Coffee Break - Networking and Poster Sessions
16:35-16:55	NTNU - Martin Landrø
16:55-17:15	Sintef - Ane Lothe
17:15-17:30	FORCE Expectations for the research community - Improved Oil and Gas Recovery Technical Committee - Erik Søndena
17:30-17:45	FORCE Expectations for the research community - Improved Exploration Technical Committee - John Berry
17:45-18:30	Discussion - Industry expectations / Academic expectations
18:30	Reception and Dinner at the NPD





Joining Forces Seminar – Feb 2-3 2016

Programme

Day 2	Wednesday 3rd Feb
08:15-08:45	Coffee Break - Networking and Poster Sessions
08:45-09:00	Introduction to Day 2 - comments from Day 1
09:00-09:20	UiS - Alejandro Escalona
09:20-09:40	UiB - Atle Rotevatn
09:40-10:00	CIPR - Jan Tveranger
10:00-10:30	Coffee Break - Networking and Poster Sessions
10:30-10:50	UiT - Alfred Hanssen
10:50-11:10	UiO - Brit Lisa Skjelkvåle
11:10-11:30	CEED - Jan Inge Faleide
11:30-11:50	UNiS - Kim Senger
11:50-12:50	Lunch + Networking and Poster Sessions
12:50-13:10	Norwegian Computing Centre - Petter Abrahamsen
13:10-13:30	NORSAR - Åsmund Drottning
13:30-13:50	NGU - Odleiv Olesen
13:50-14:10	UiB - Tor Arne Johansen
14:10-14:40	Coffee Break - Networking and Poster Sessions
14:40-15:50	Panel Discussion - Future R+D projects, how to build the collaboration
15:50-16:00	Final comments and closing remarks (organizing committee)

