

Comparison of one- and two-step seismic inversion for Lithology and Fluid prediction

Per Røe (NR), Odd Kolbjørnsen (Lundin), Ragnar Hauge (NR)

FORCE Practical Rock Physics and Inversion for Exploration and Production

17/10 2017



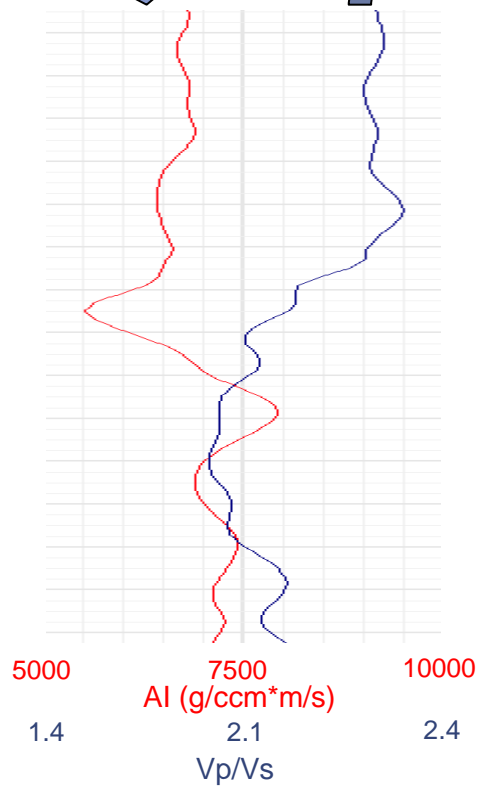
Two-step seismic LFP

Seismic inversion

Rock physics inversion

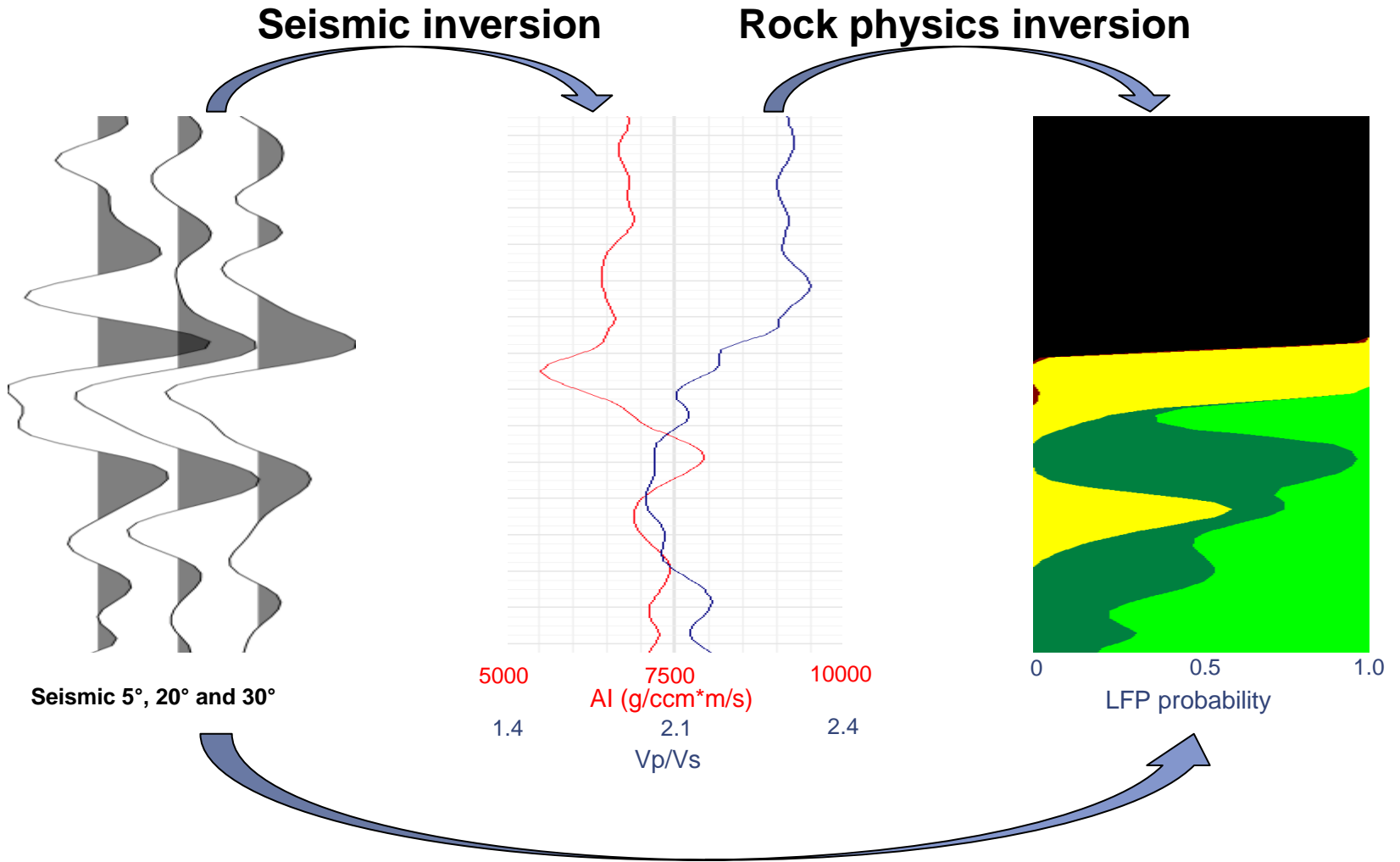


Seismic 5°, 20° and 30°



LFP probability

Two-step seismic LFP



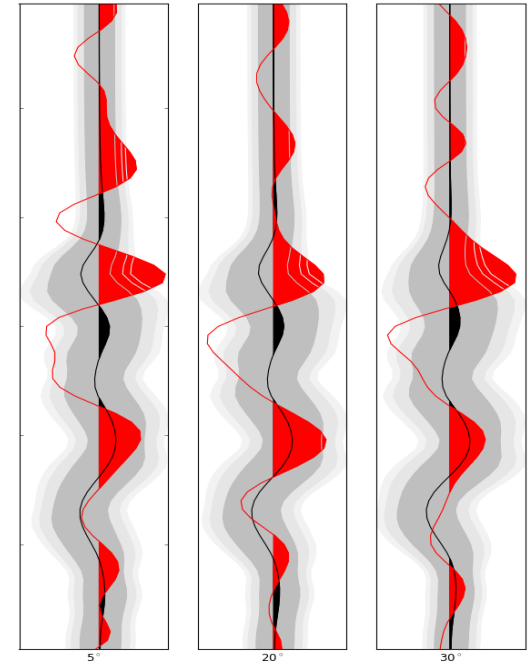
Bayesian seismic inversion

$$\text{Bayes rule: } p(f|d) \propto p(f) * p(d|f)$$

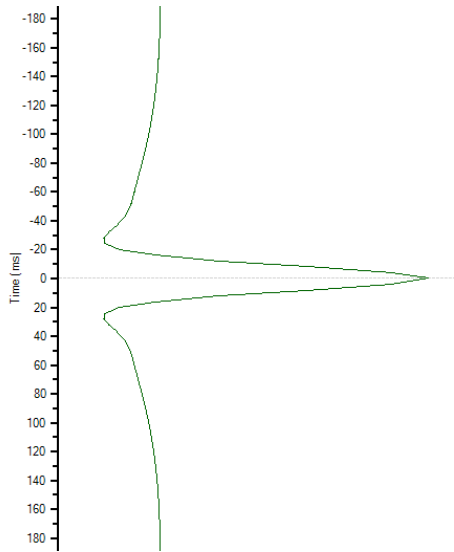
Posterior \propto

Prior

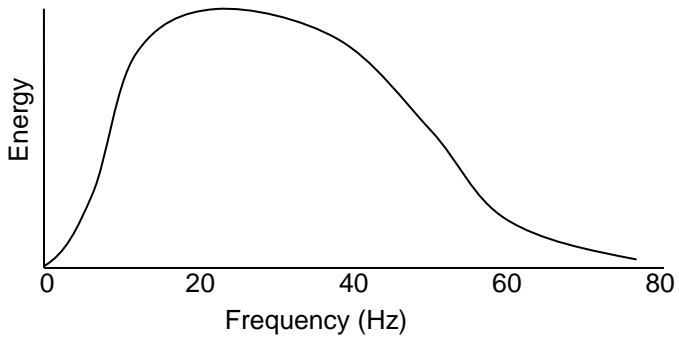
* Likelihood(data)



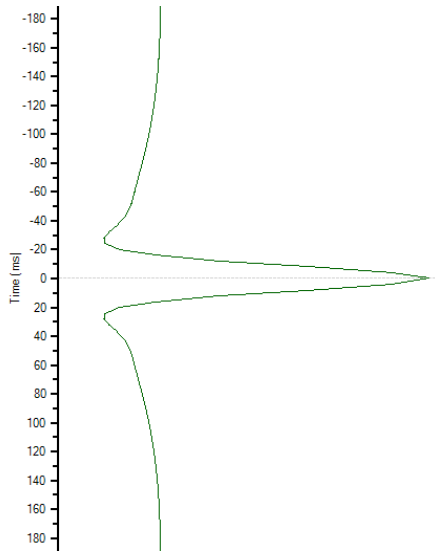
Why do we need the prior?



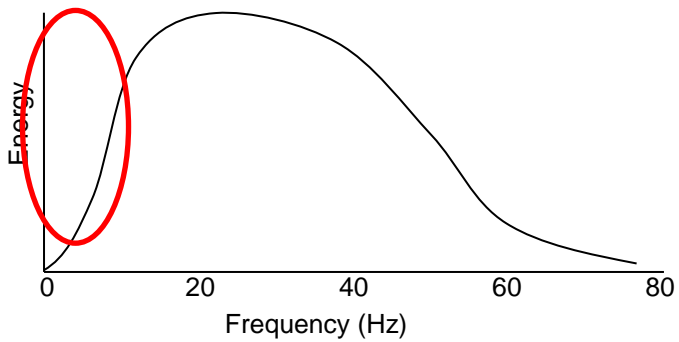
Energy spectrum



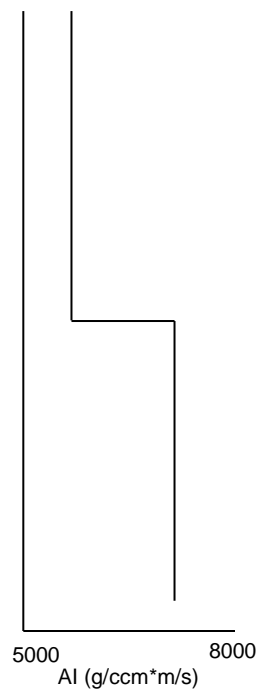
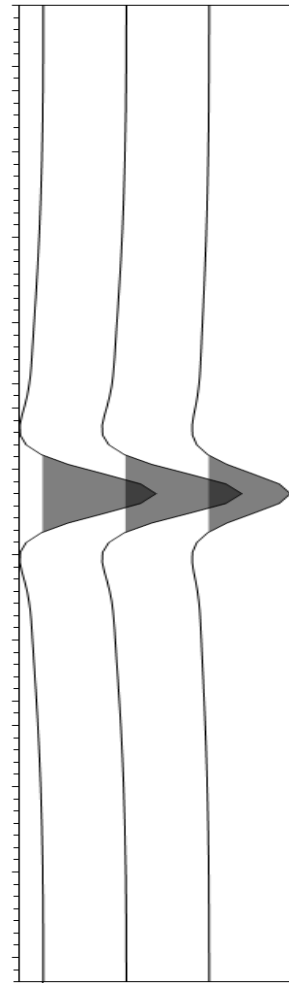
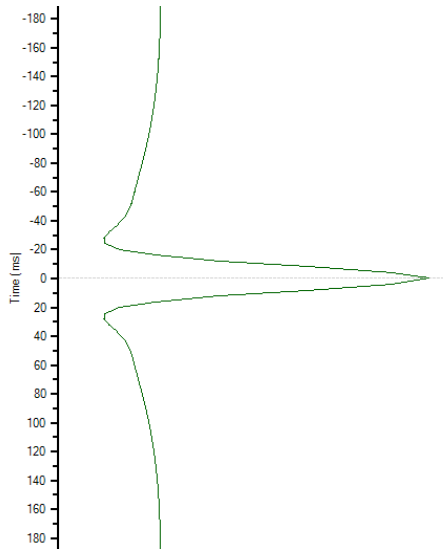
Why do we need the prior?



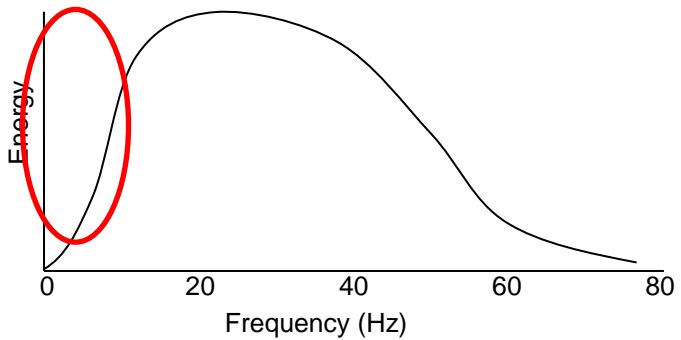
Energy spectrum



Why do we need the prior?

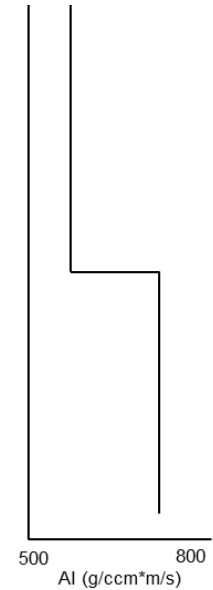
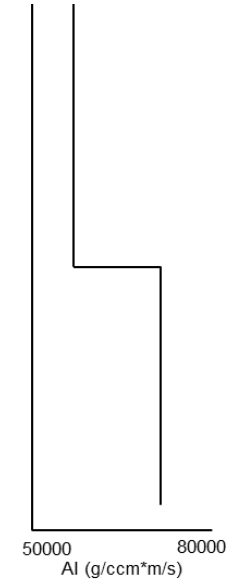
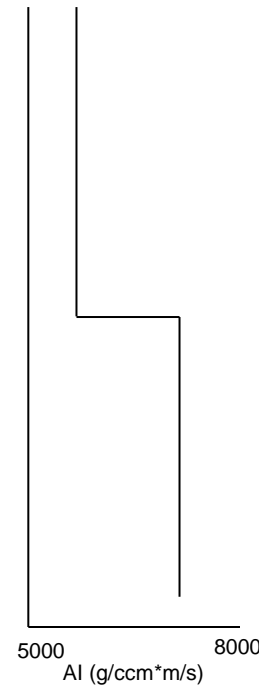
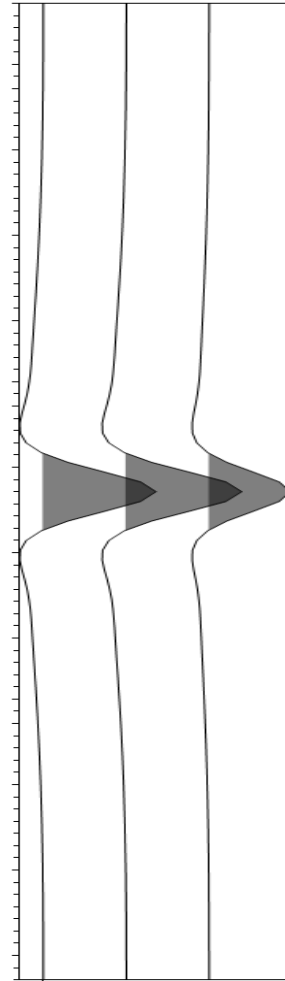
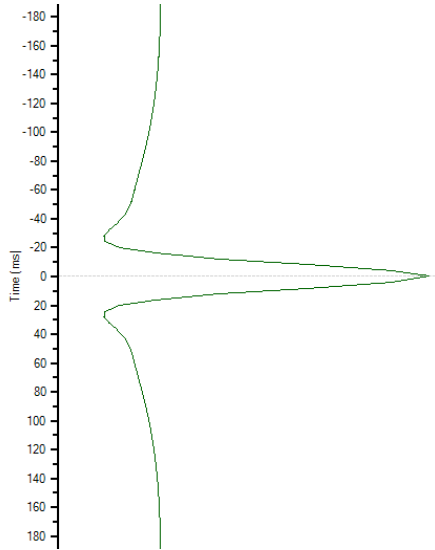


Energy spectrum

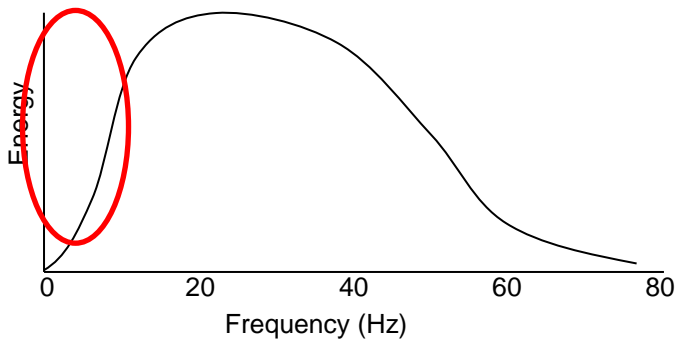


Seismic 5°, 15° and 25°

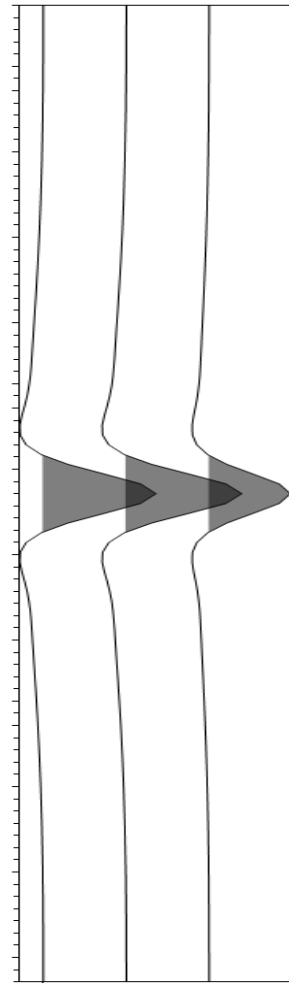
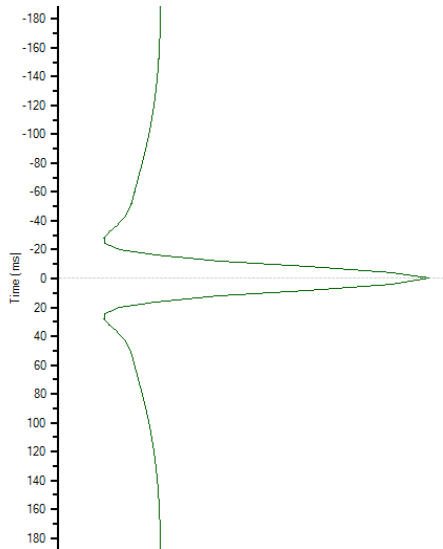
Why do we need the prior?



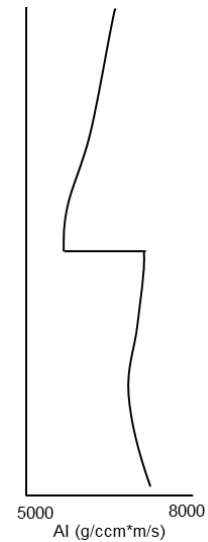
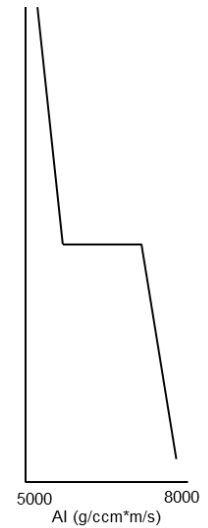
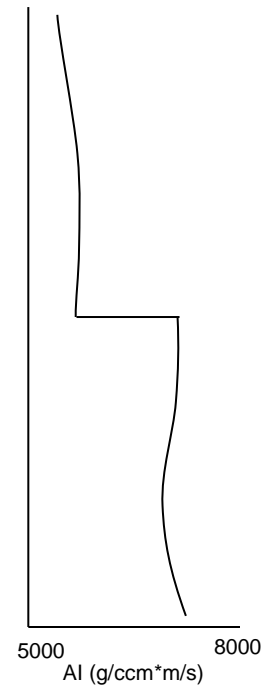
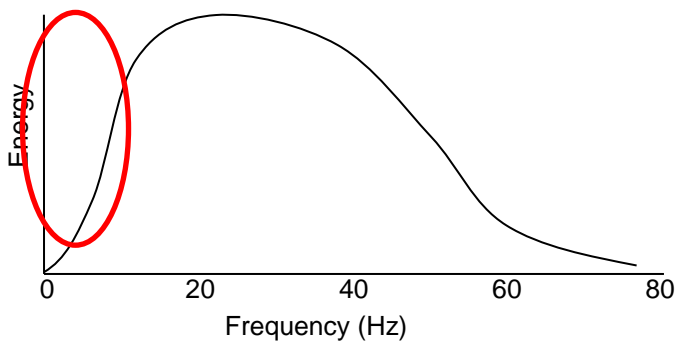
Energy spectrum



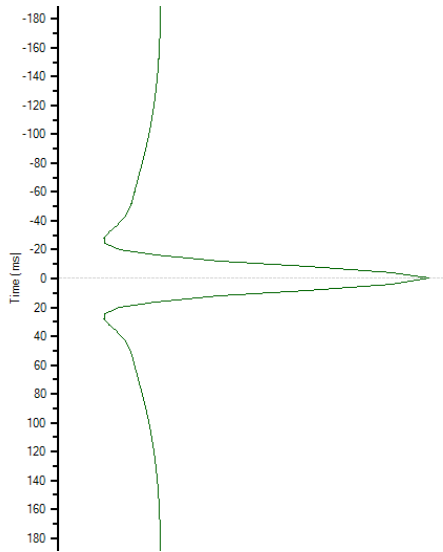
Why do we need the prior?



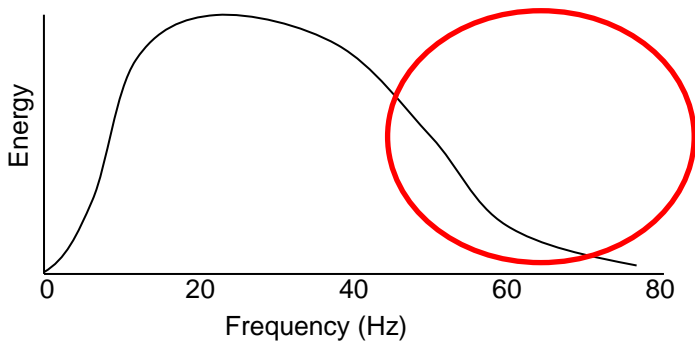
Energy spectrum



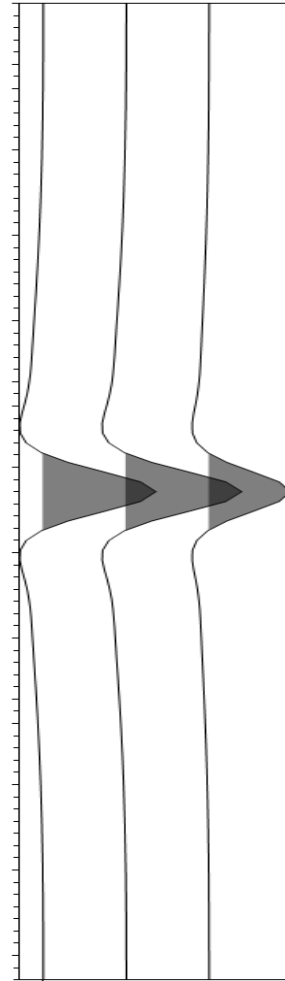
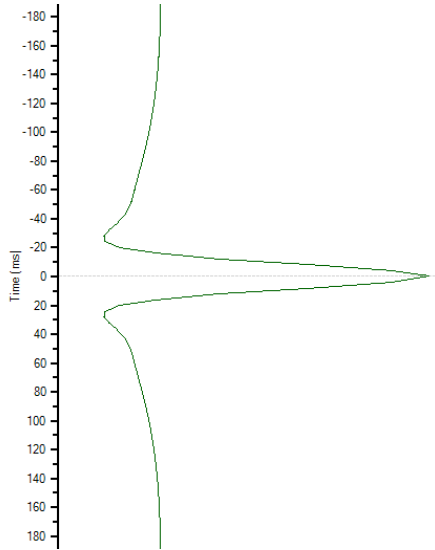
High-frequency information is also missing



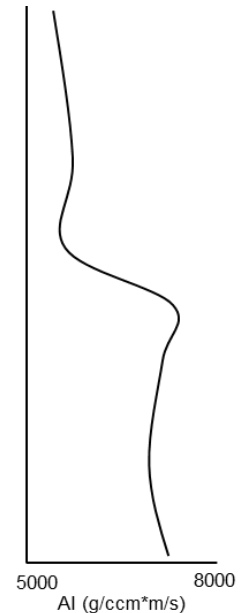
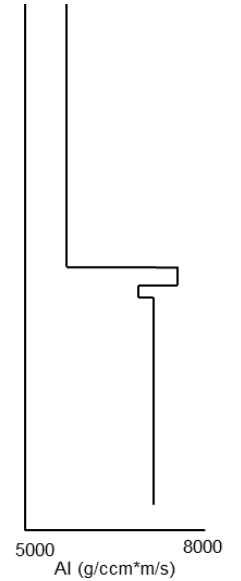
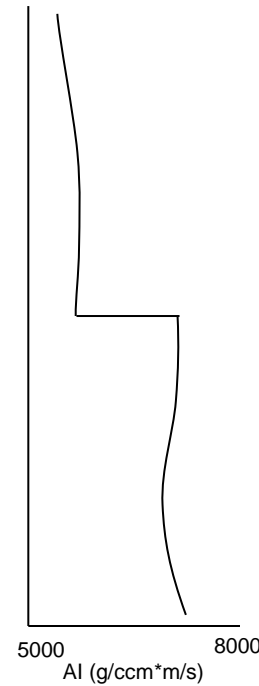
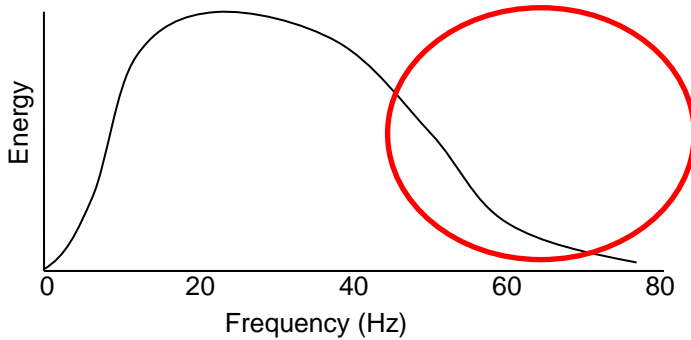
Energy spectrum



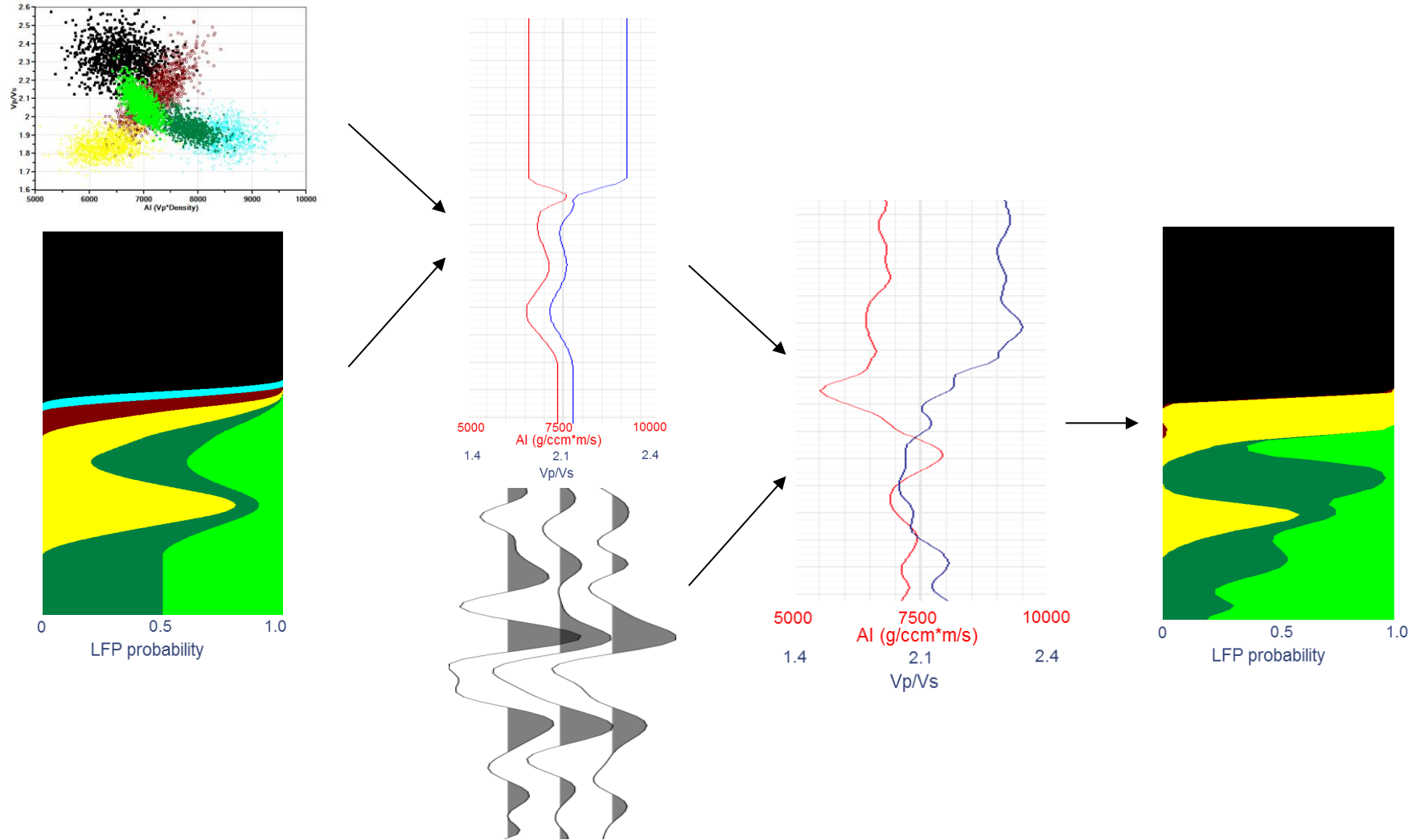
High-frequency information is also missing



Energy spectrum

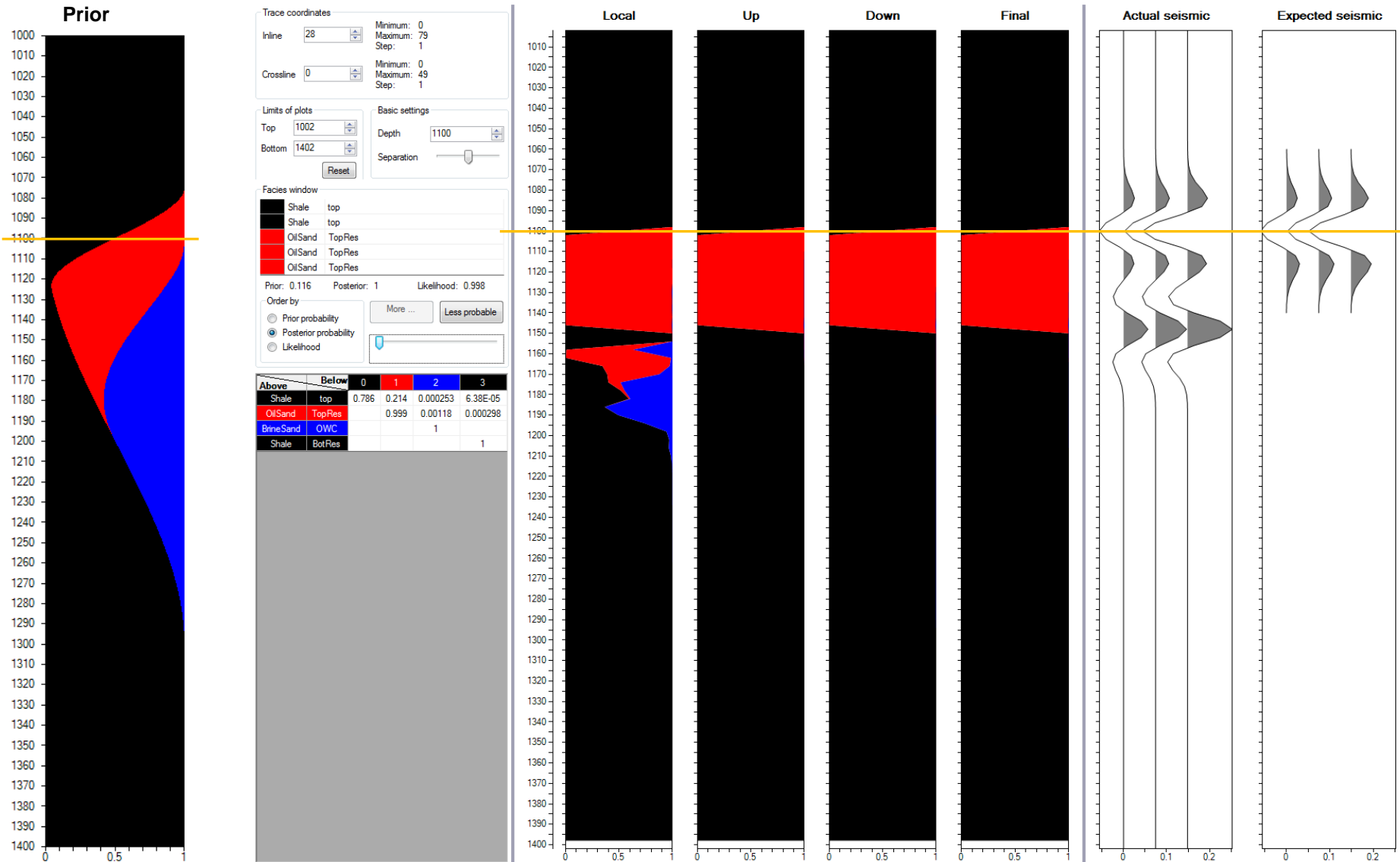


Two-step LFP inversion (PCube)

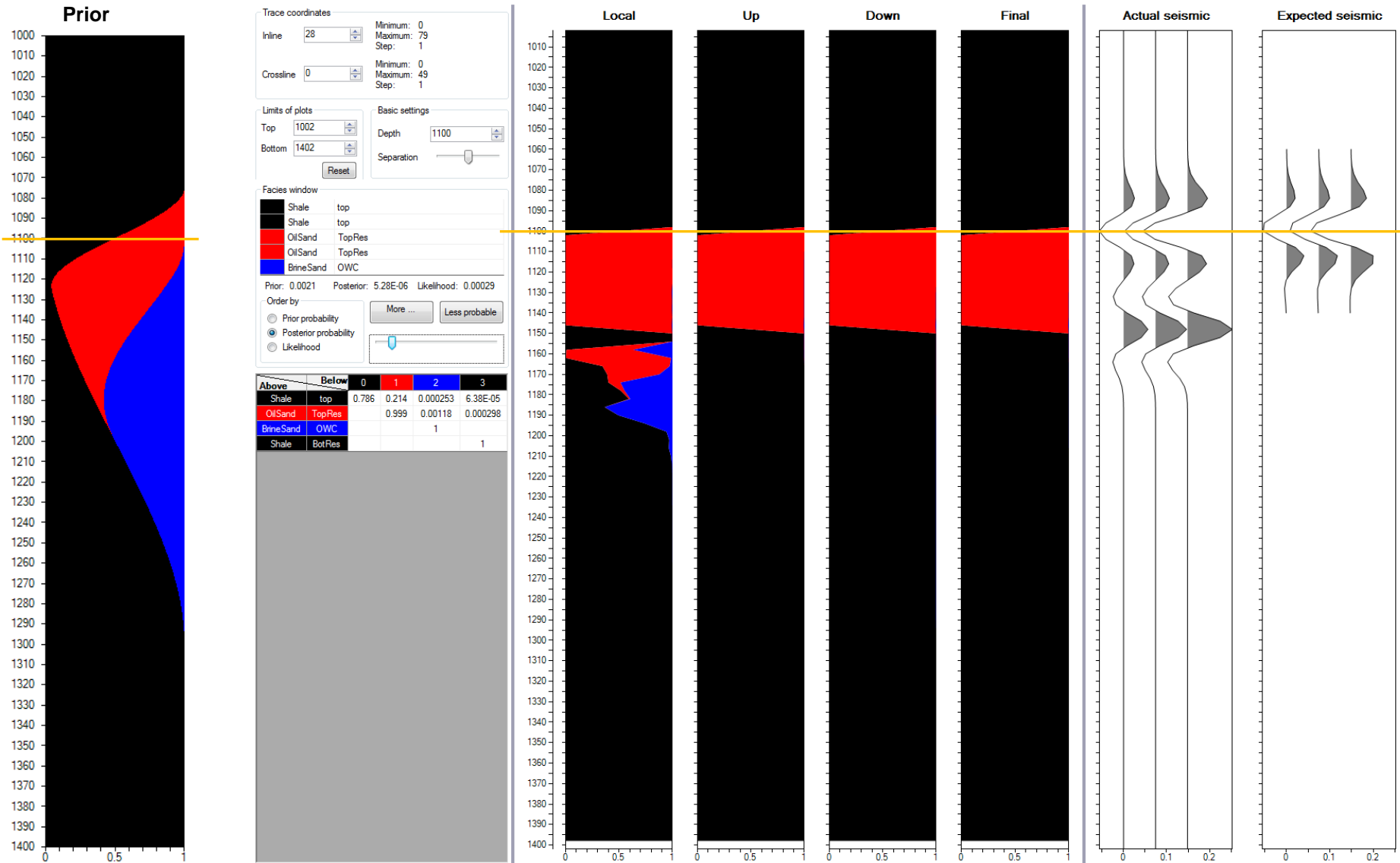


Buland et.al., 2008, *Bayesian lithology and fluid prediction from seismic prestack data*

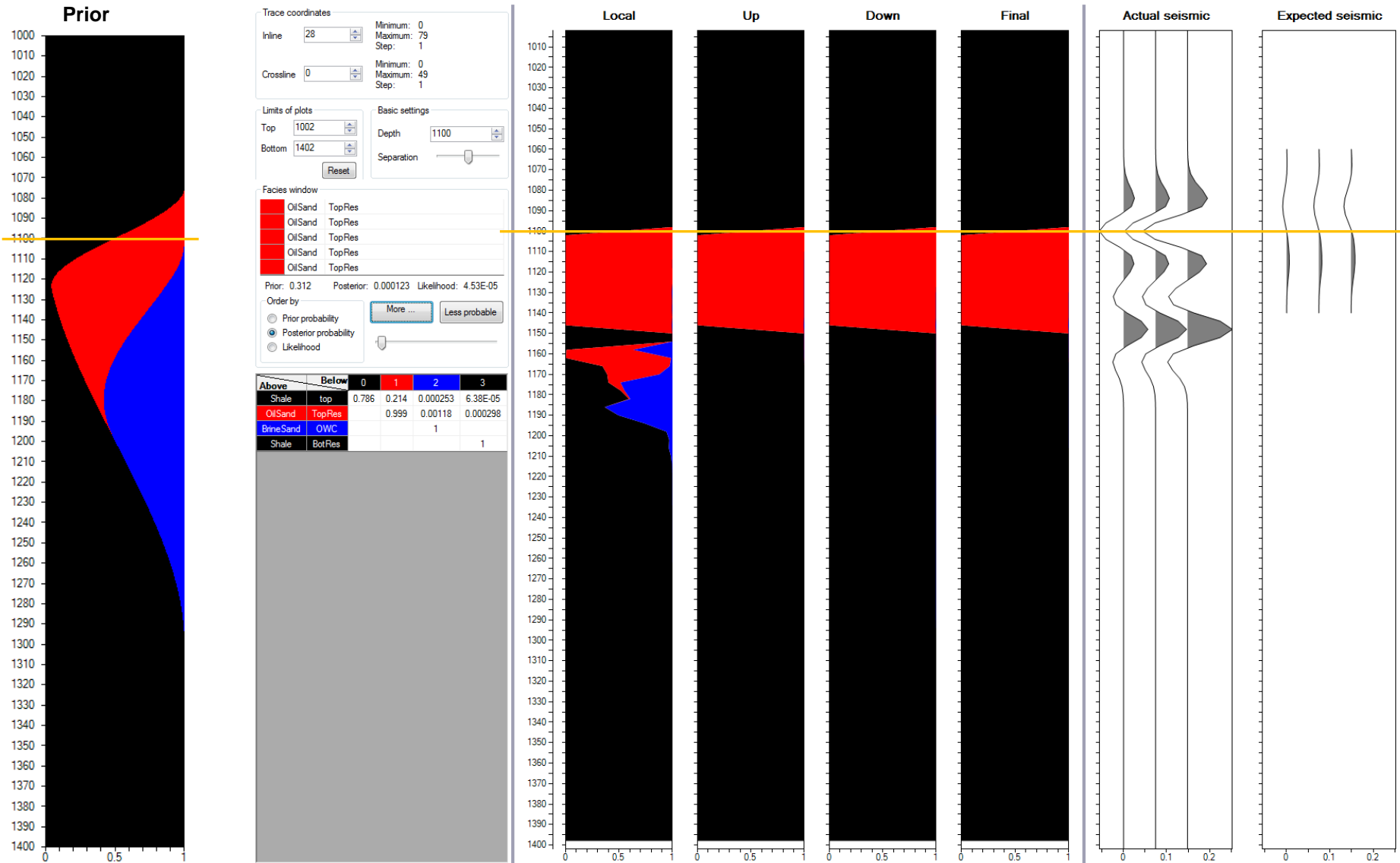
One-step LFP inversion (PCube+)



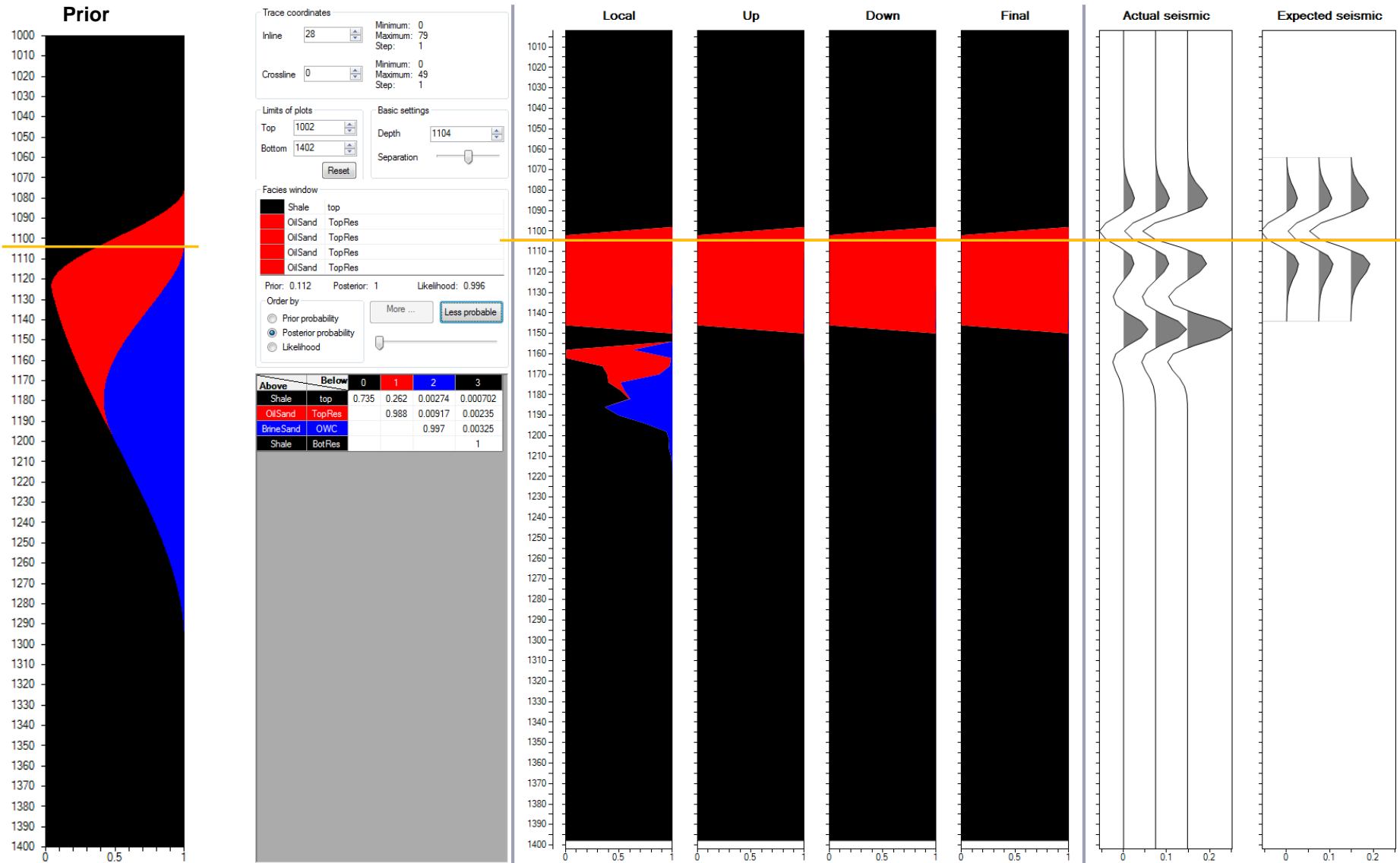
One-step LFP inversion (PCube+)



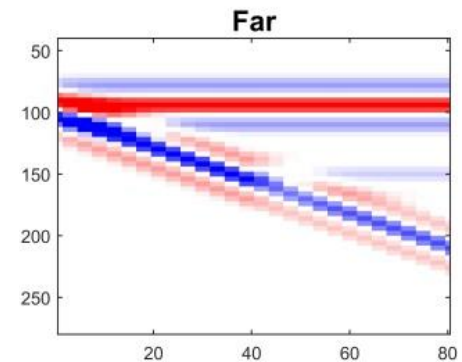
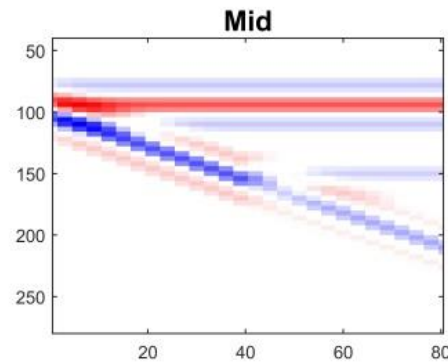
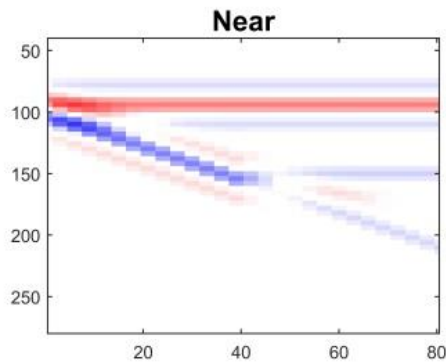
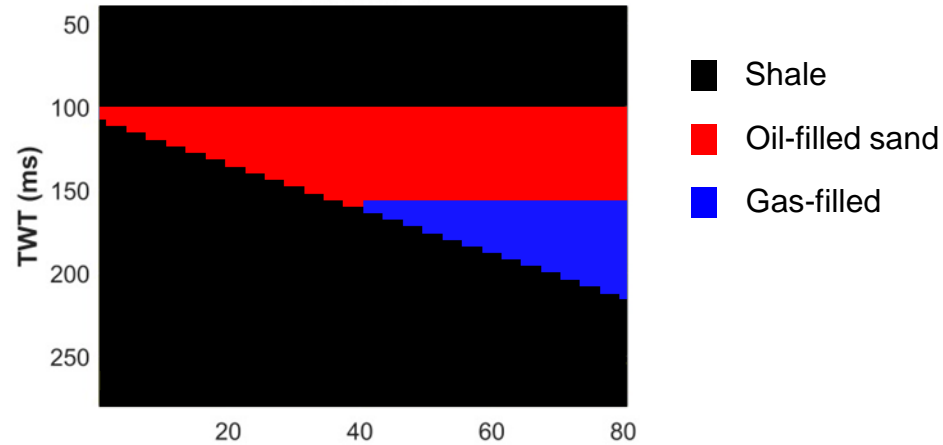
One-step LFP inversion (PCube+)



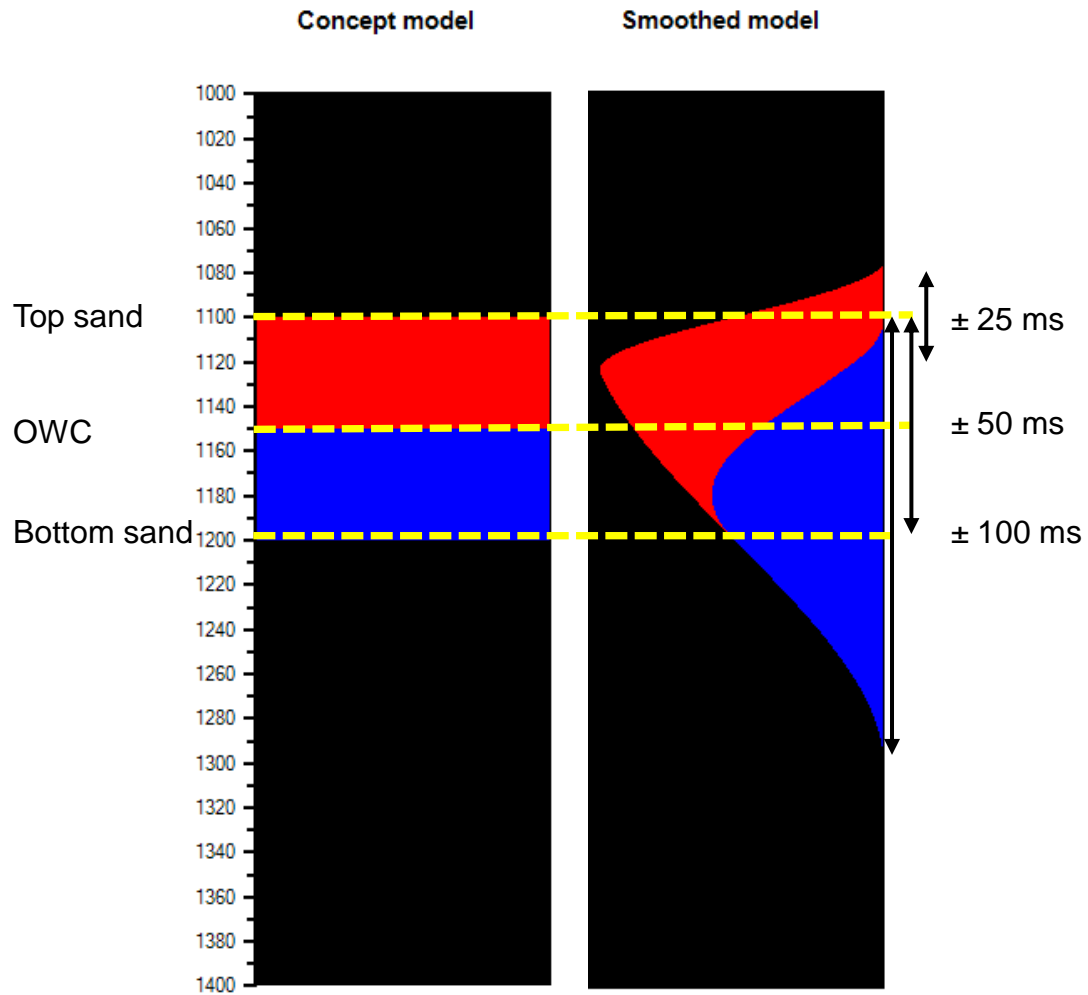
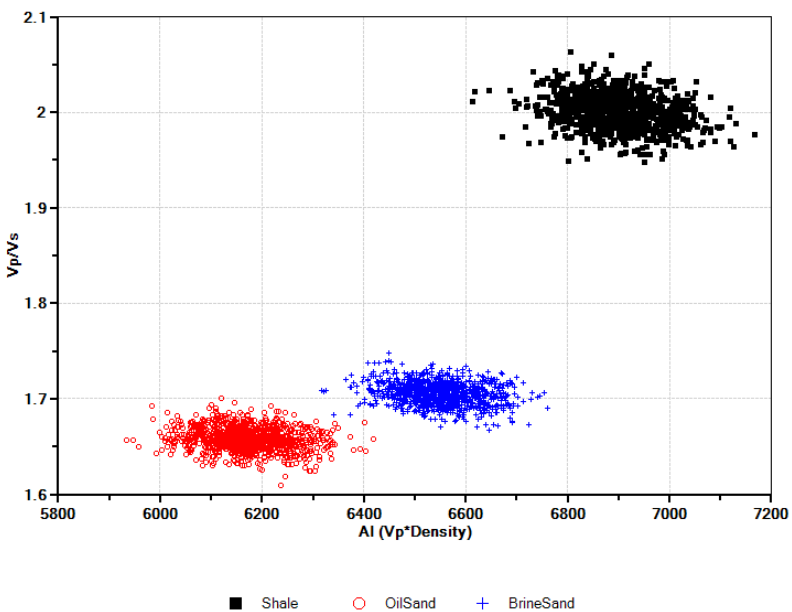
One-step LFP inversion (PCube+)

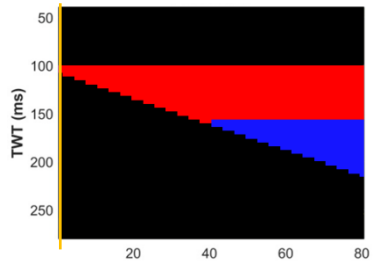


Synthetic case: Simple wedge



Prior model

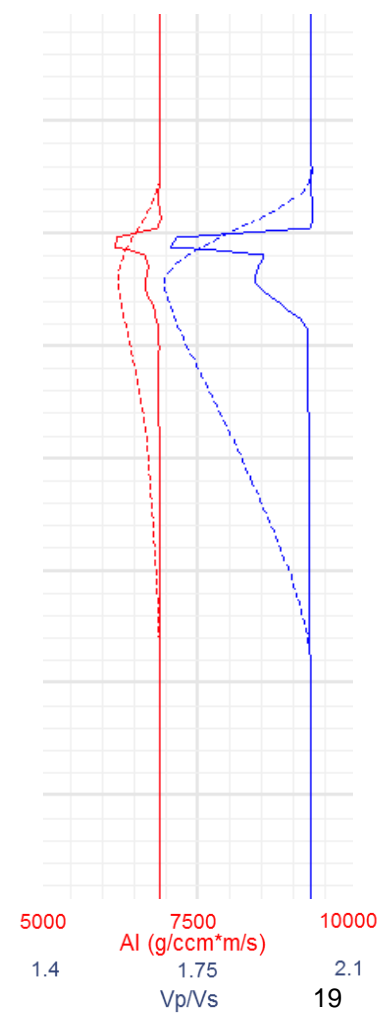
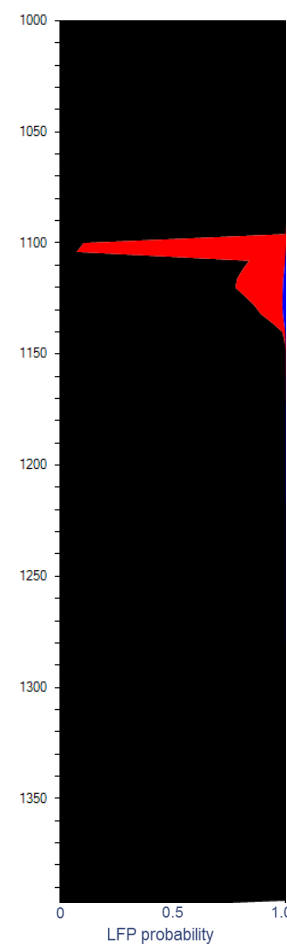
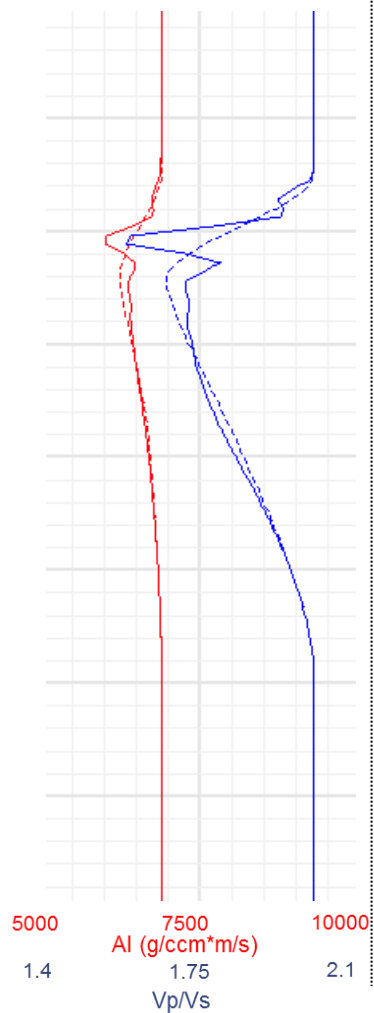
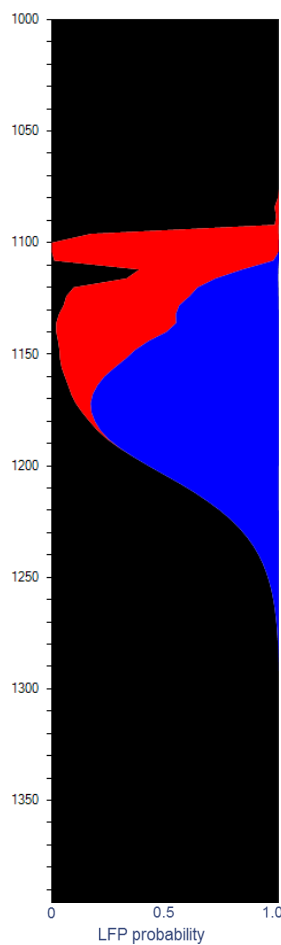
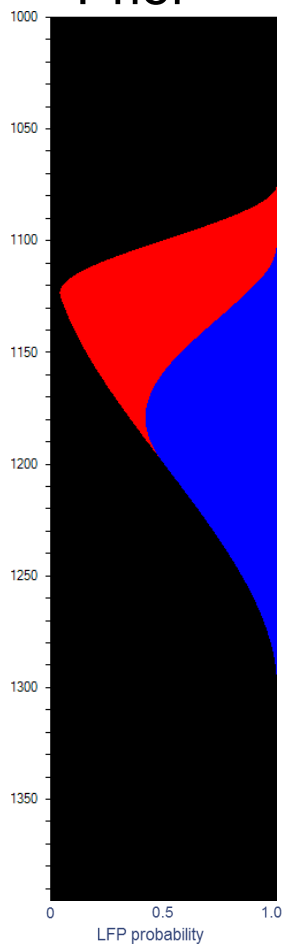


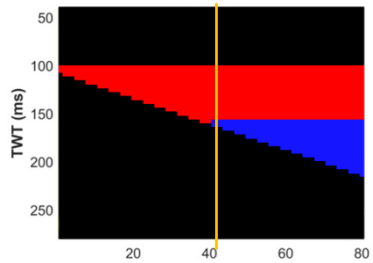


Two-step inversion

One-step inversion

Prior

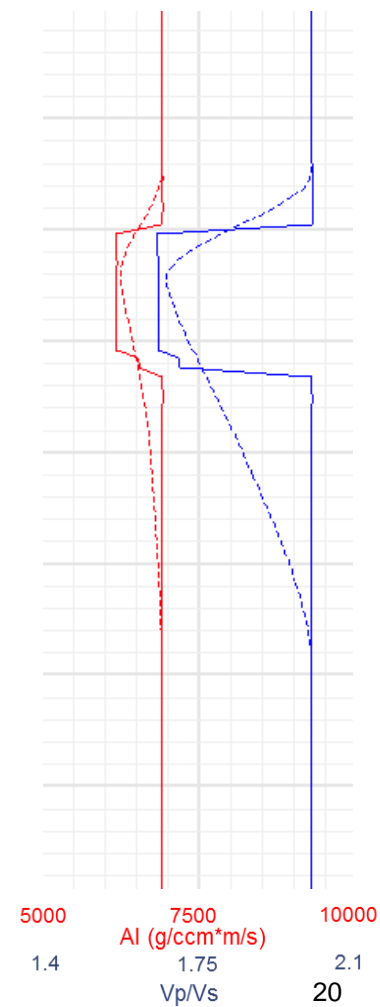
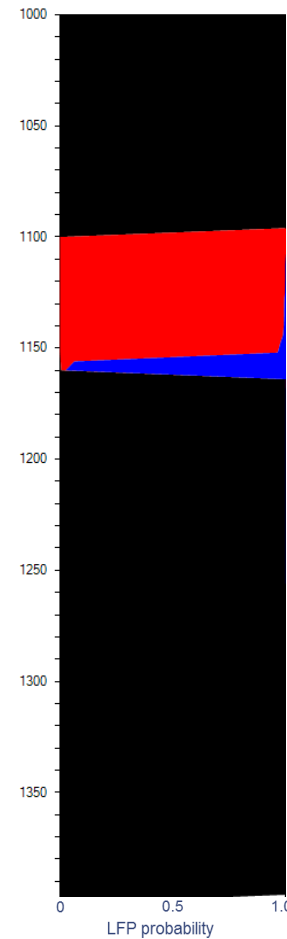
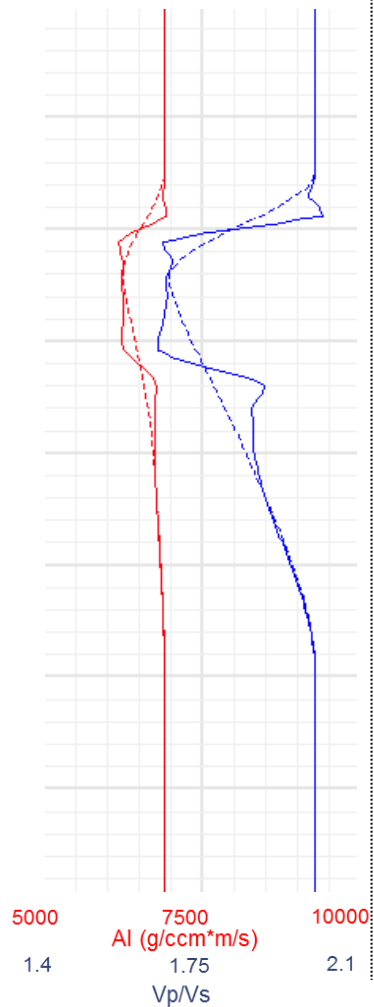
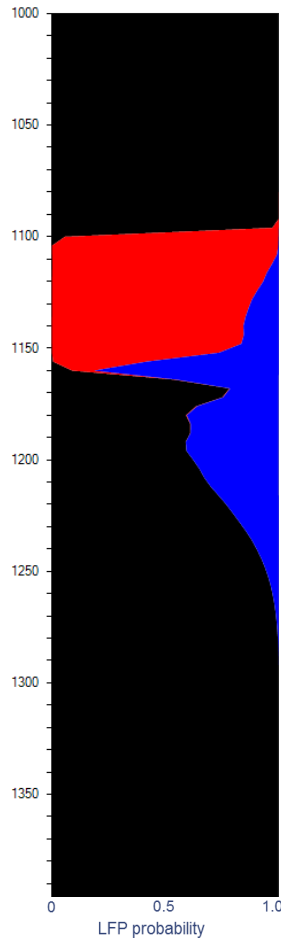
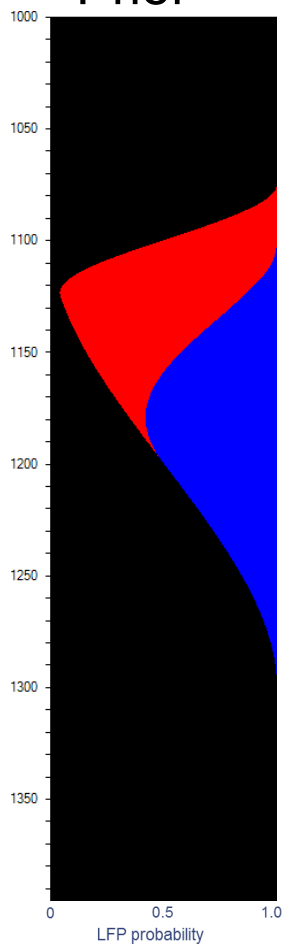


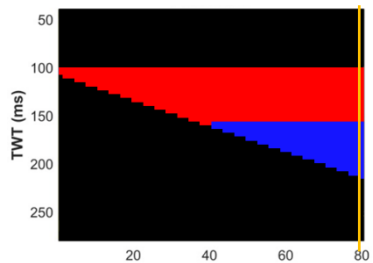


Two-step inversion

One-step inversion

Prior

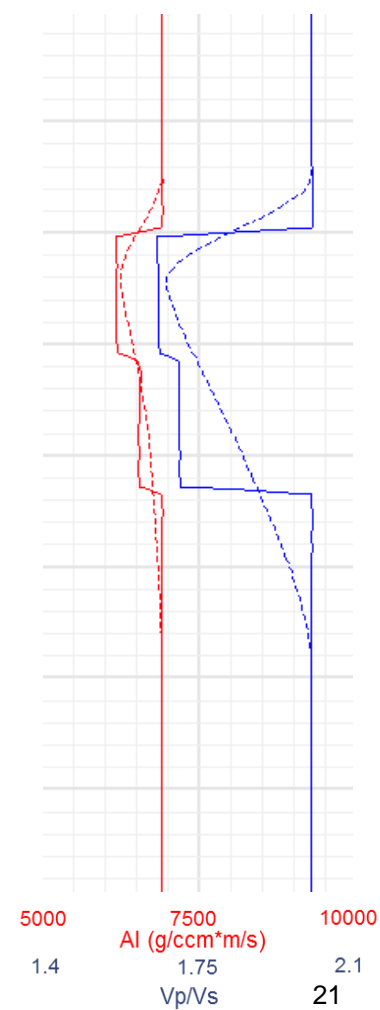
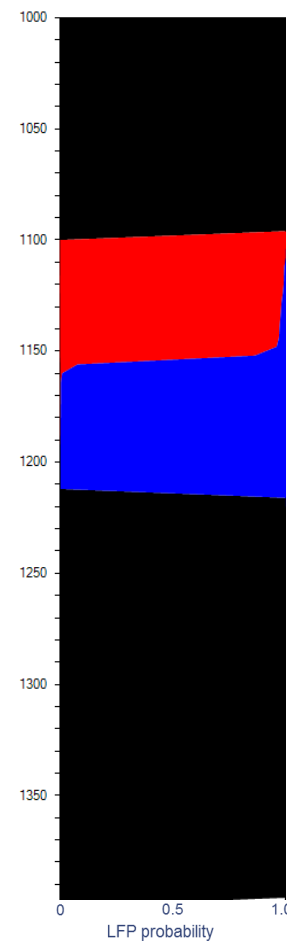
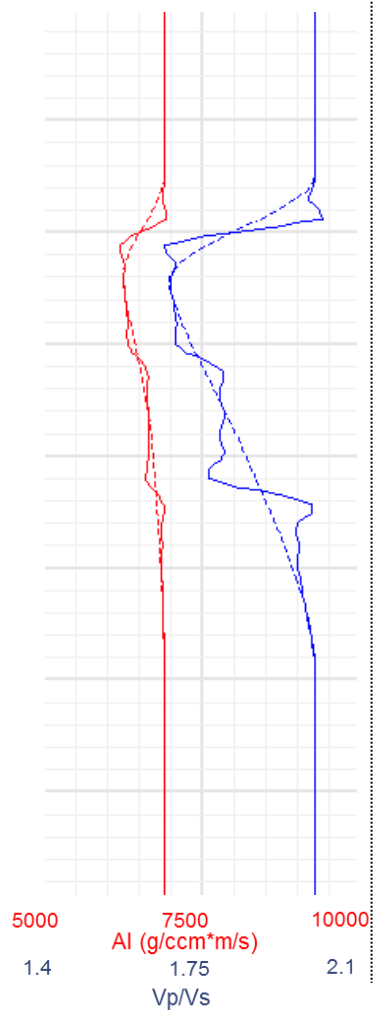
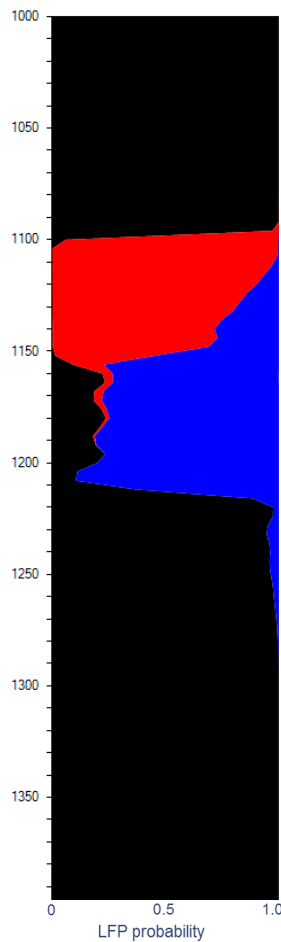
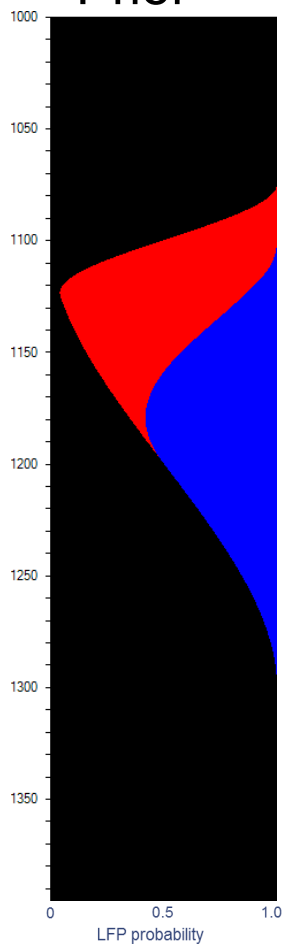




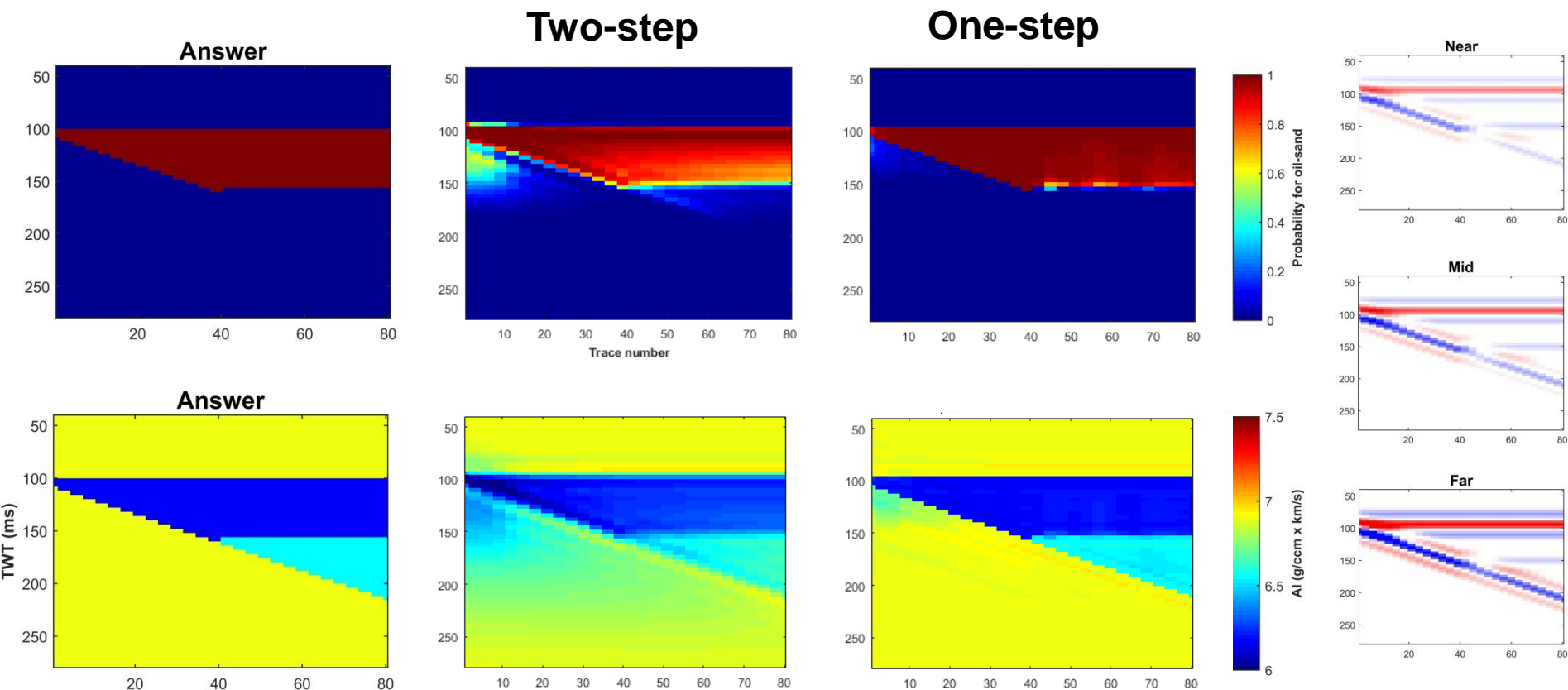
Two-step inversion

One-step inversion

Prior



Inversion results for wedge



Summary

Two-step inversion	One-step inversion
Pointwise	Neighbourhood
No lithology or fluid ordering	Lithology and fluid ordering
Facies probability only	Zone and horizon probability
Smoother result	Can resolve details below tuning resolution
Less detailed background model	More detailed background model
Fast	Slower

Acknowledgements

- ▶ We would like to thank to the researchers working with the GIG consortium and the sponsors of the GIG consortium:
 - AkerBP
 - ConocoPhillips
 - Lundin
 - Statoil

For more information, contact:

Per Røe

per.roe@nr.no

Tlf: +47 22 85 25 69

<https://gig.nr.no>