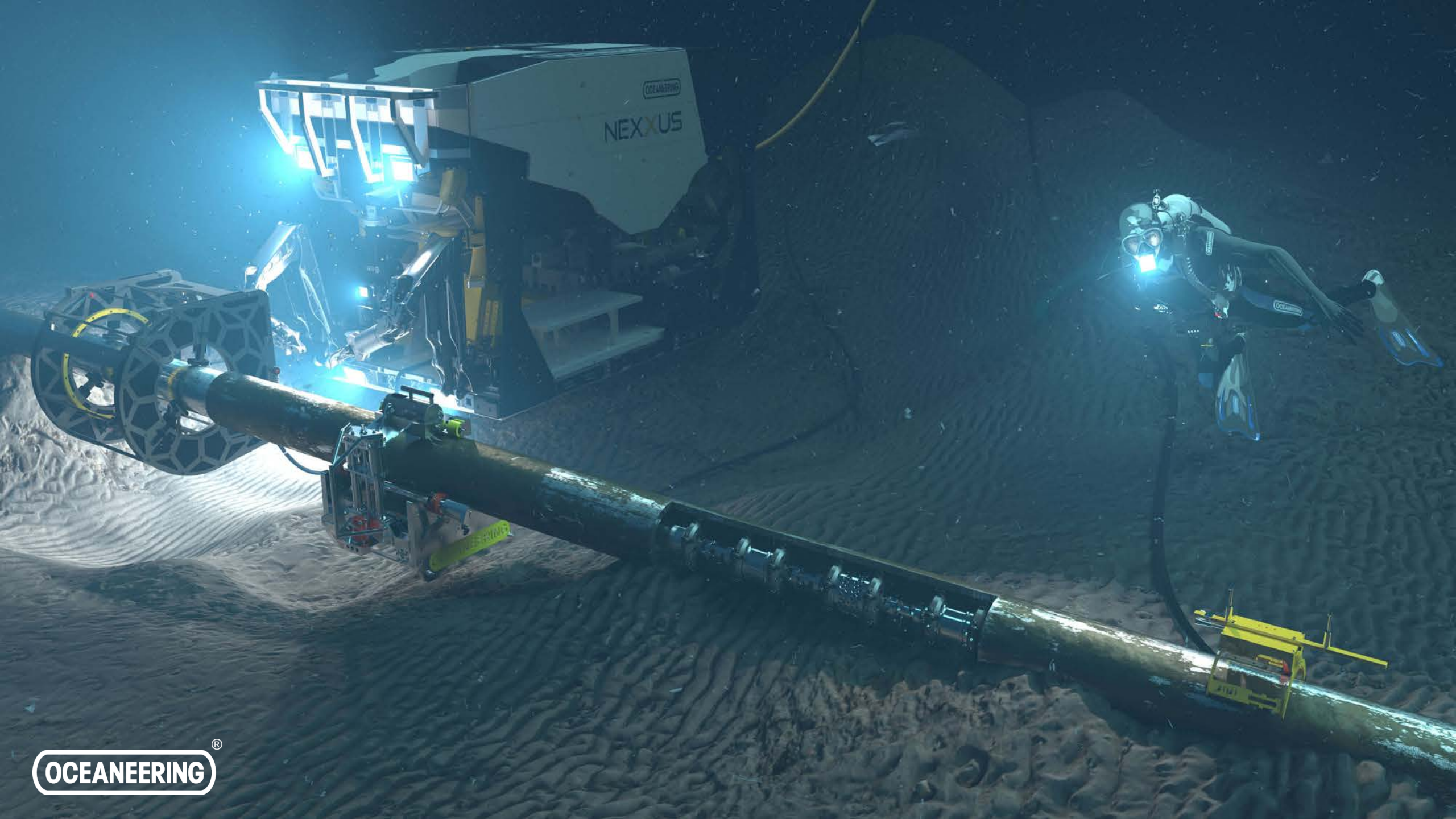




# The Explorationist meets the Subsea Engineer: Exploring Possibilities

Steffan Lindsø  
Global Service Line Manager  
sklindso@oceanering.com  
+47 4003 7818





OCEANEERING  
NEXXUS





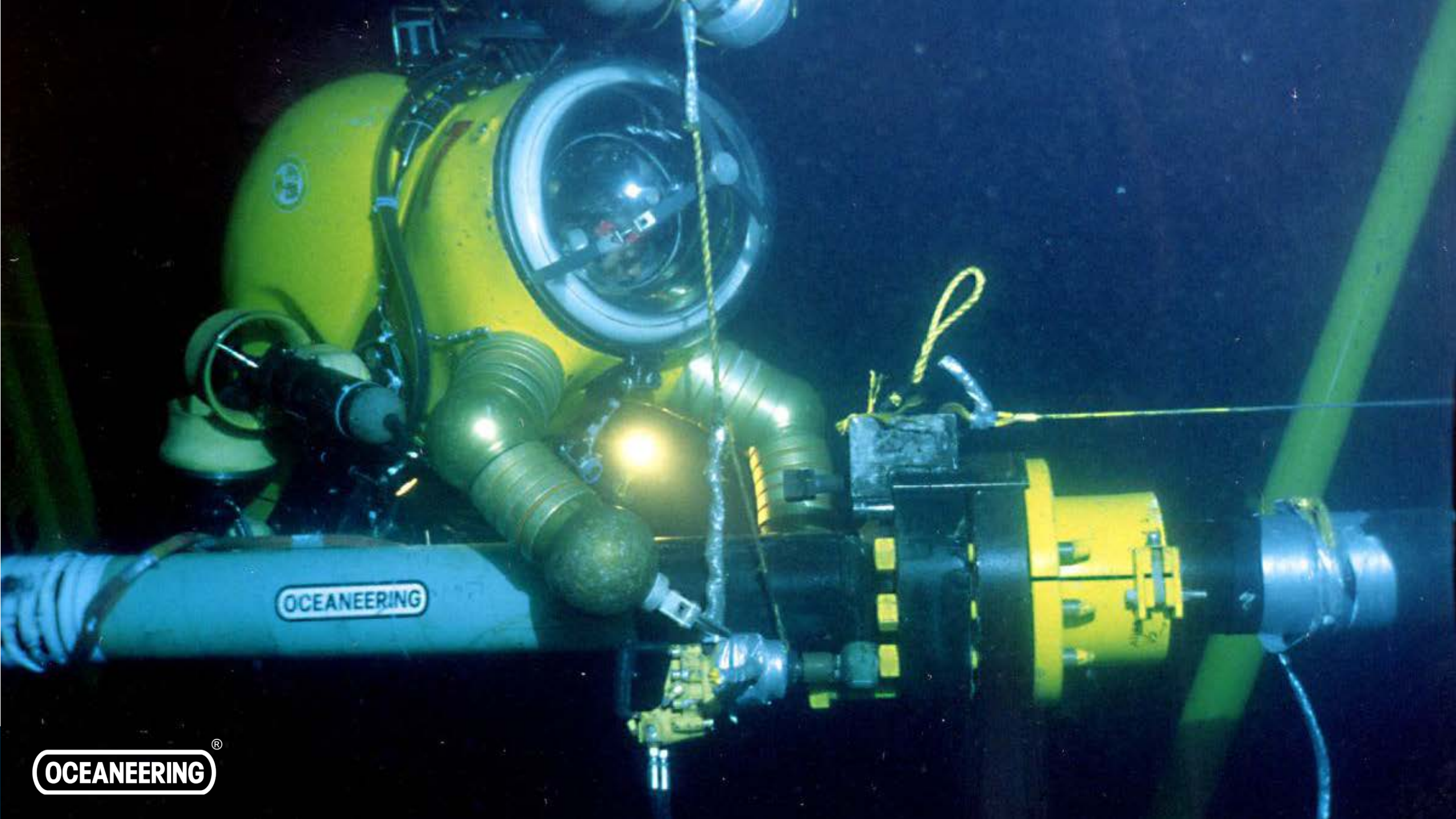
OCEANEERING®











OCEANEERING

OCEANEERING®







CAGE  
THR: 247  
DPT: 6073'  
HDC: 103  
TRN: 0.2

195 210 225 240 255 270  
P: 0 233 R: 1  
TRN: 0.2

ROV  
DPT: 6058'  
ALT: 66'  
BTY: 6124'

Millennium



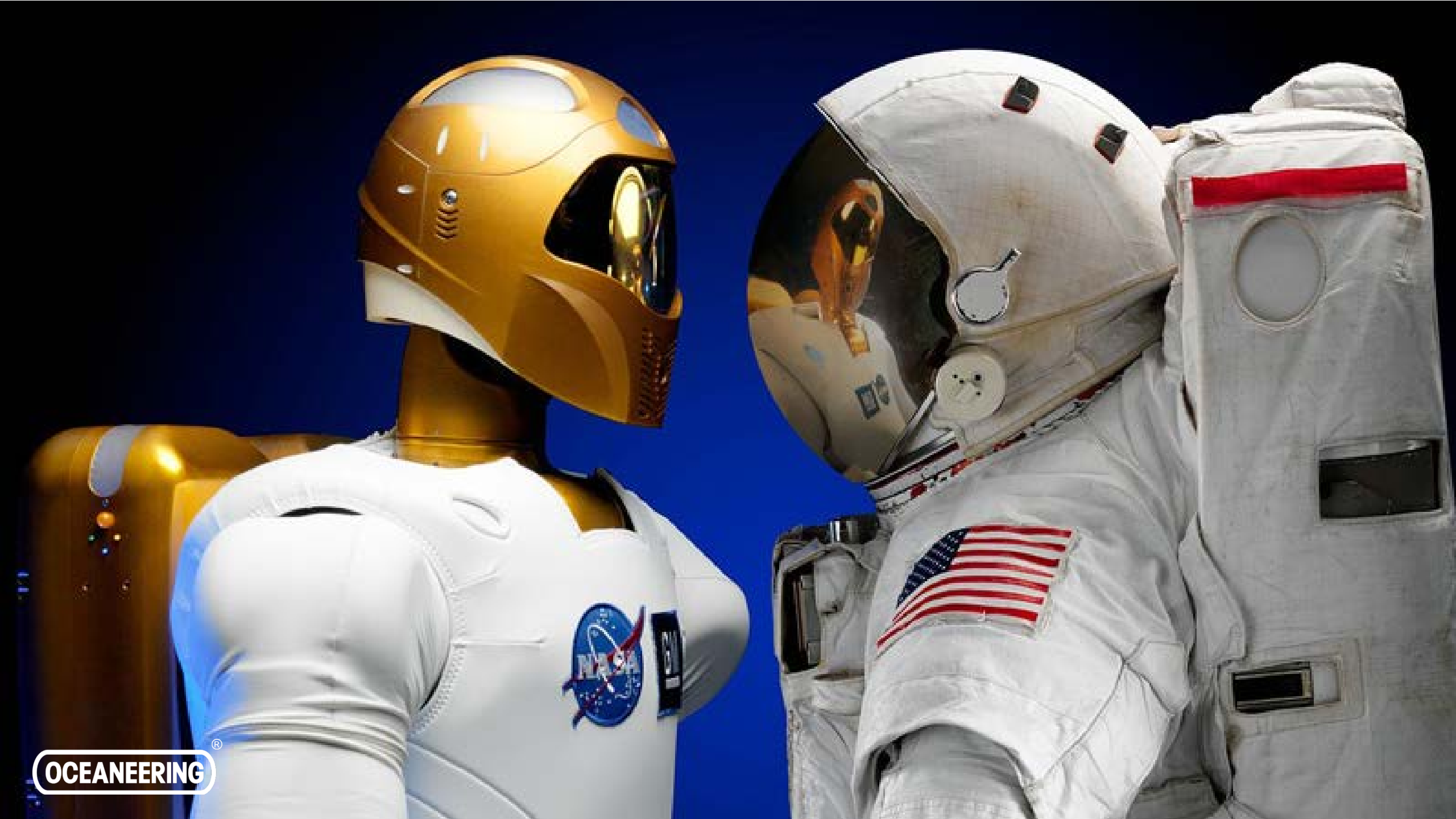








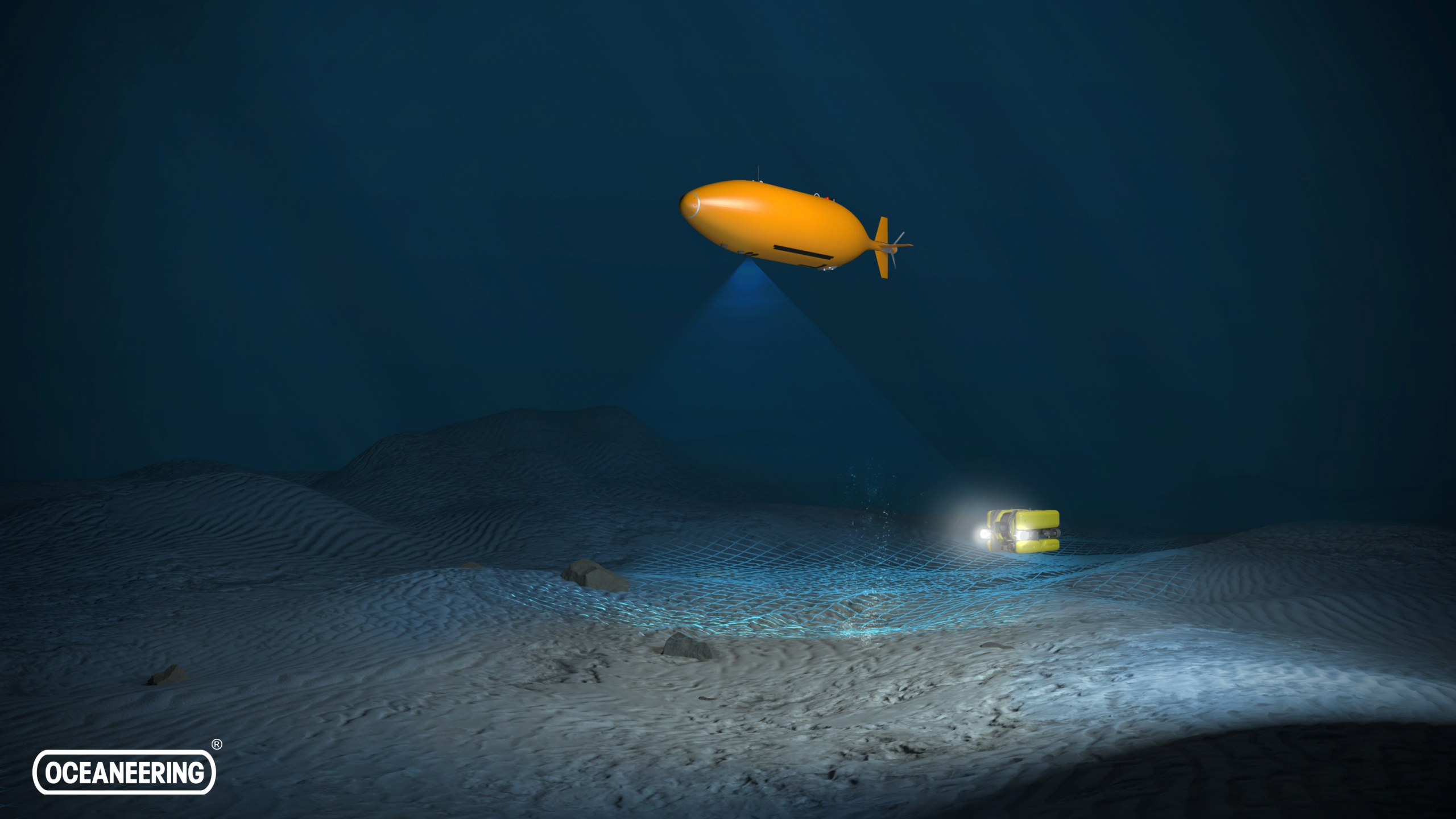




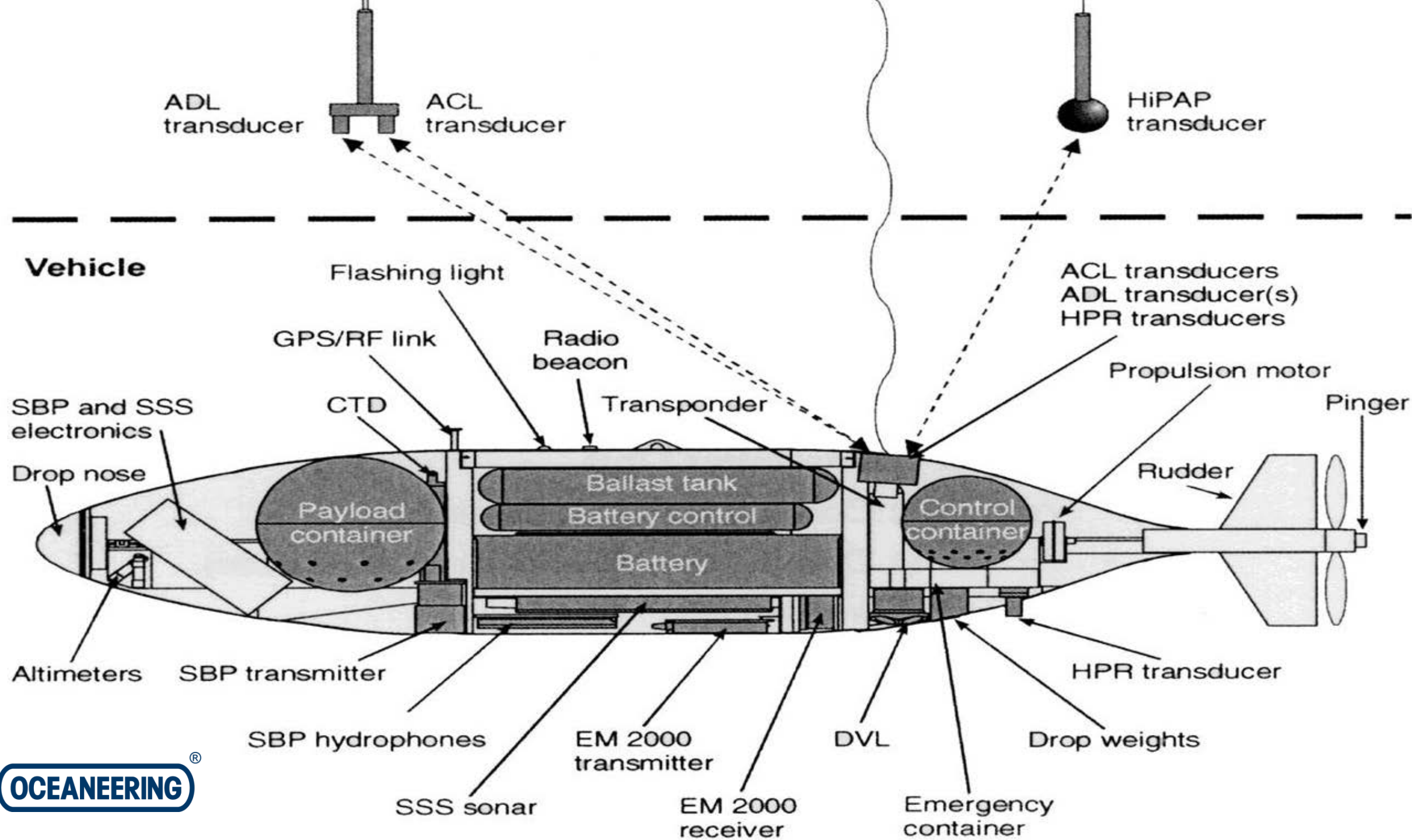






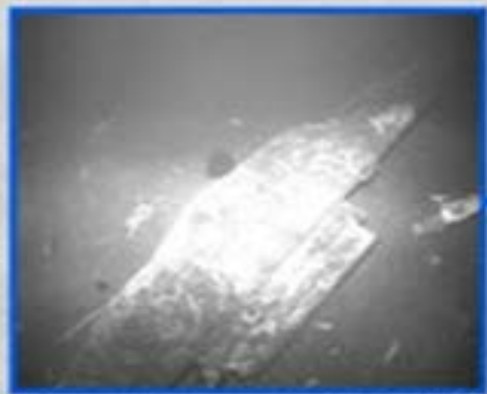








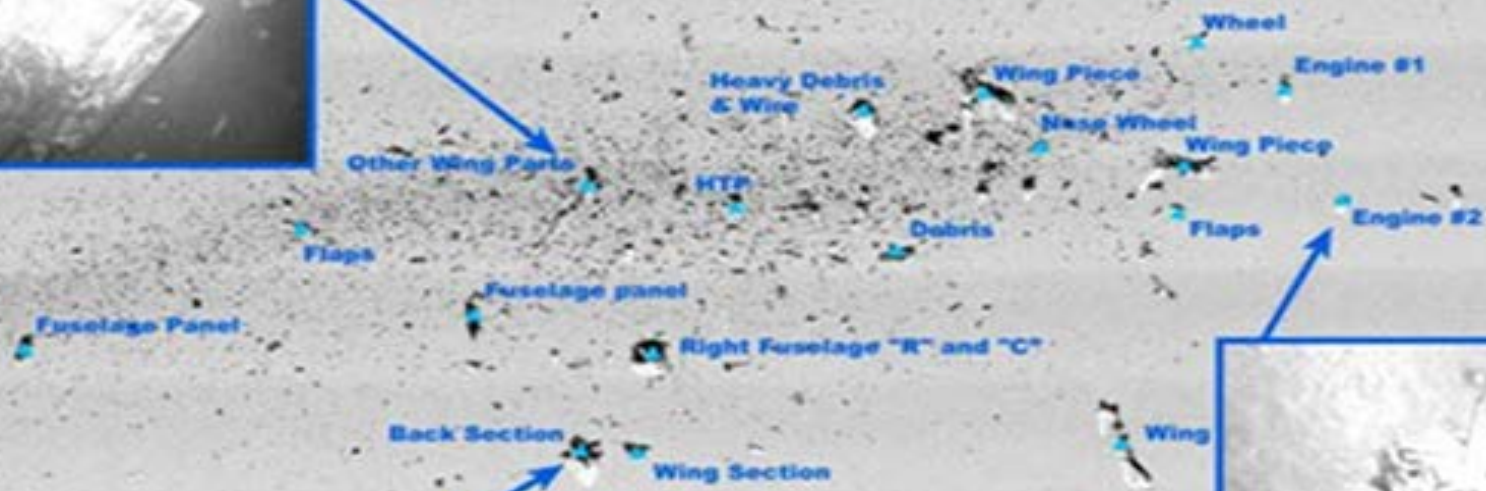
# REMUS 2011 Survey Air France #447 Debris Field



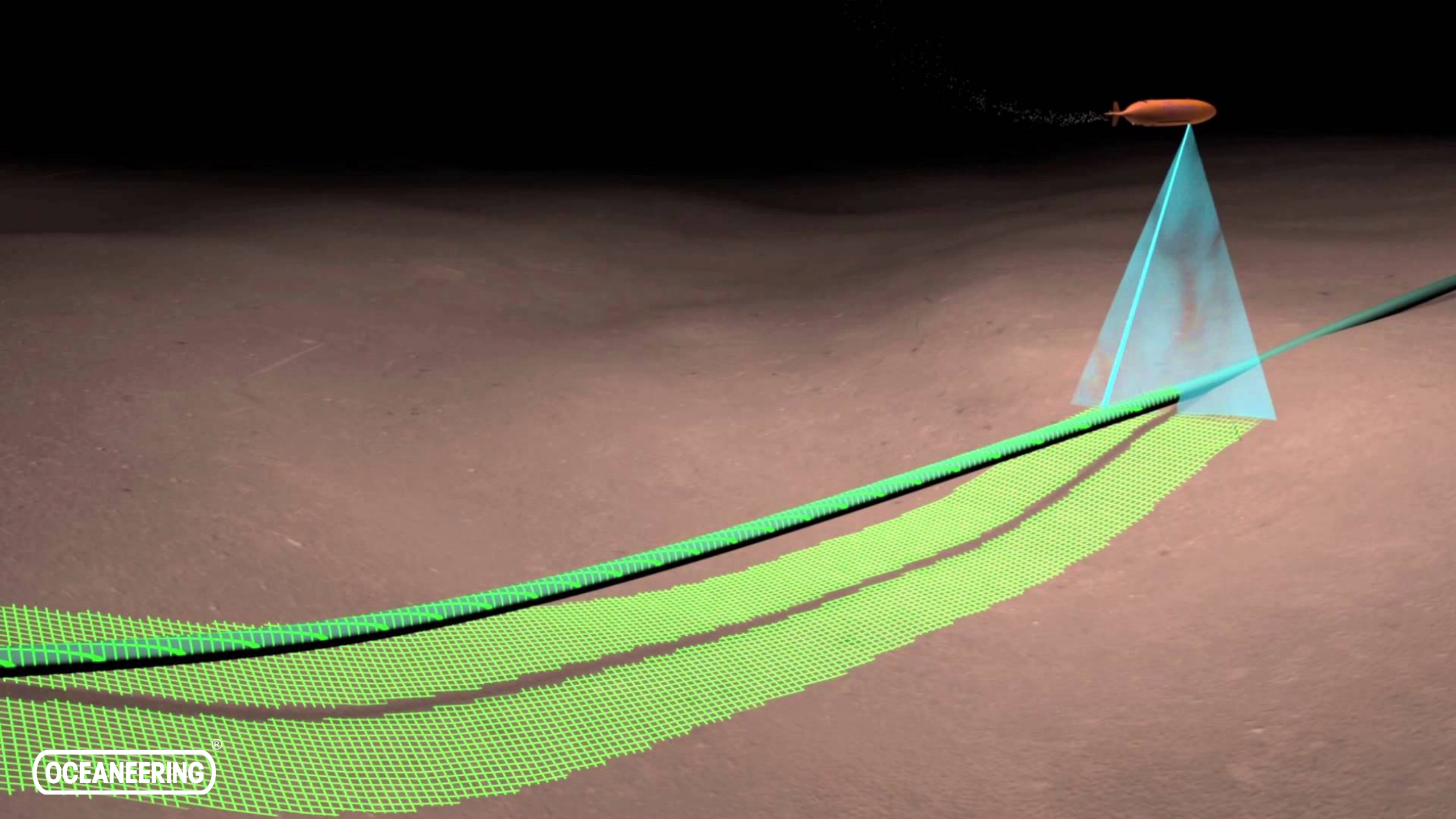
Fuselage with Door



Right Fuselage "I" and "CE"  
& Left Landing Gear

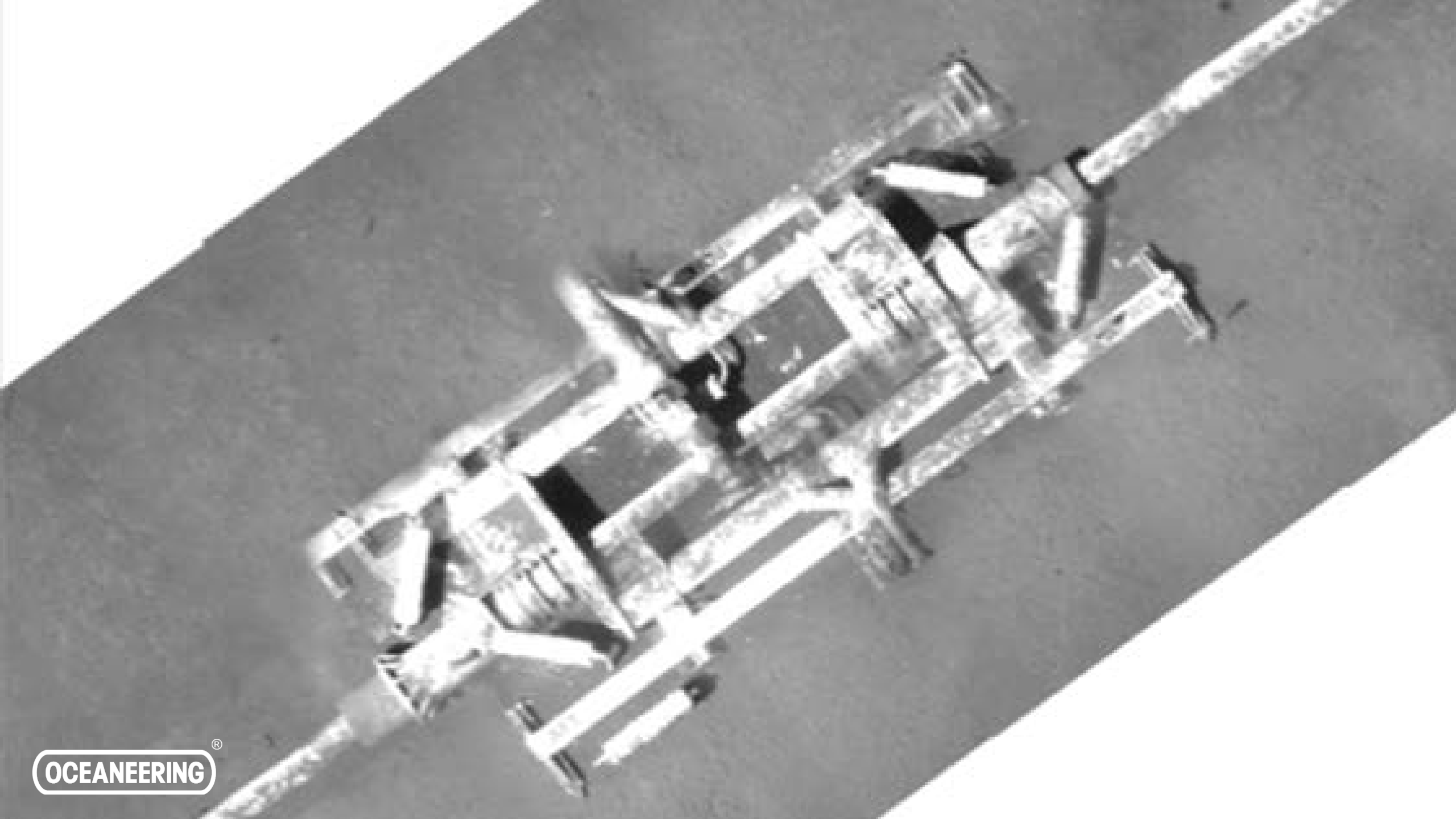






OCEANEERING®

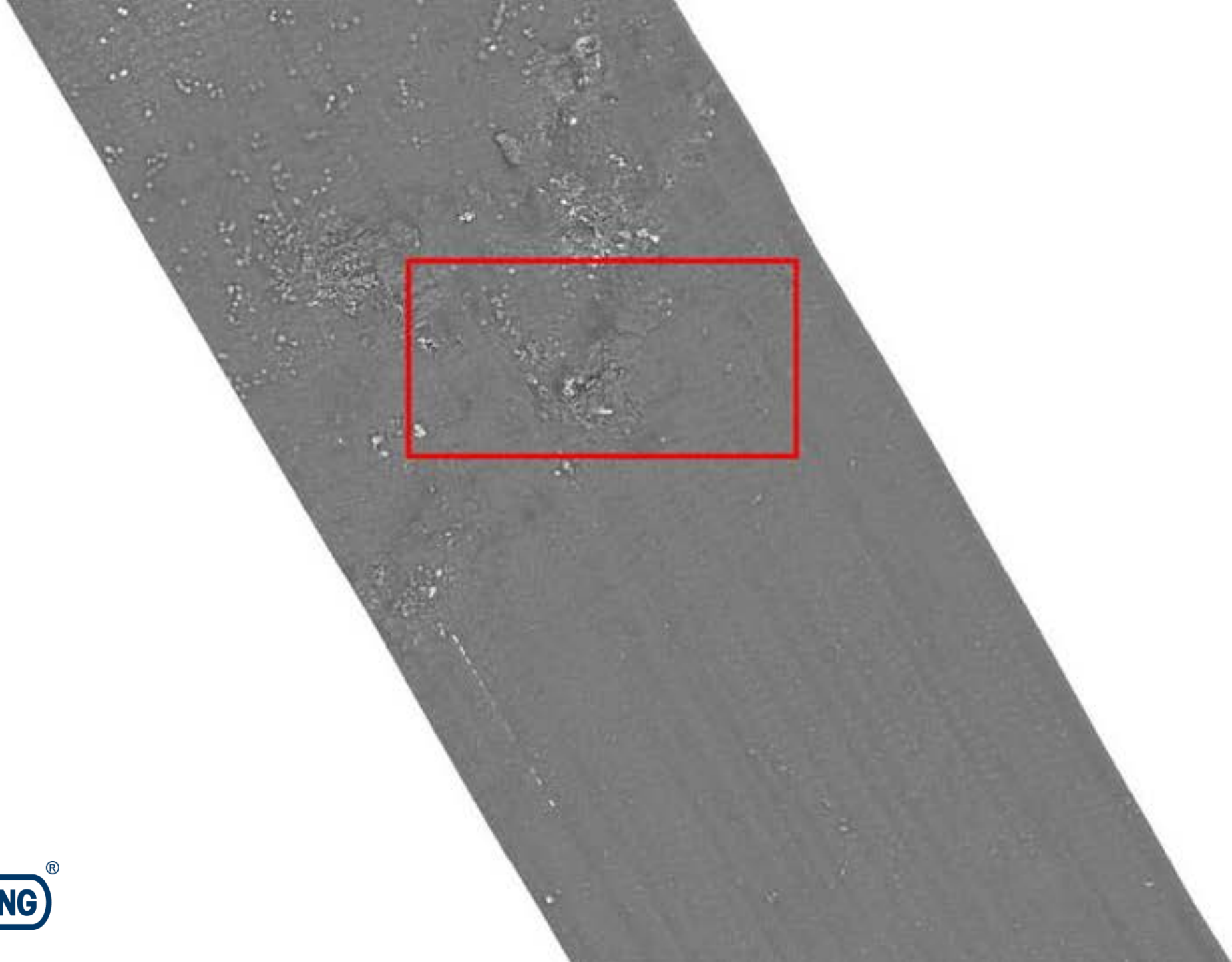
























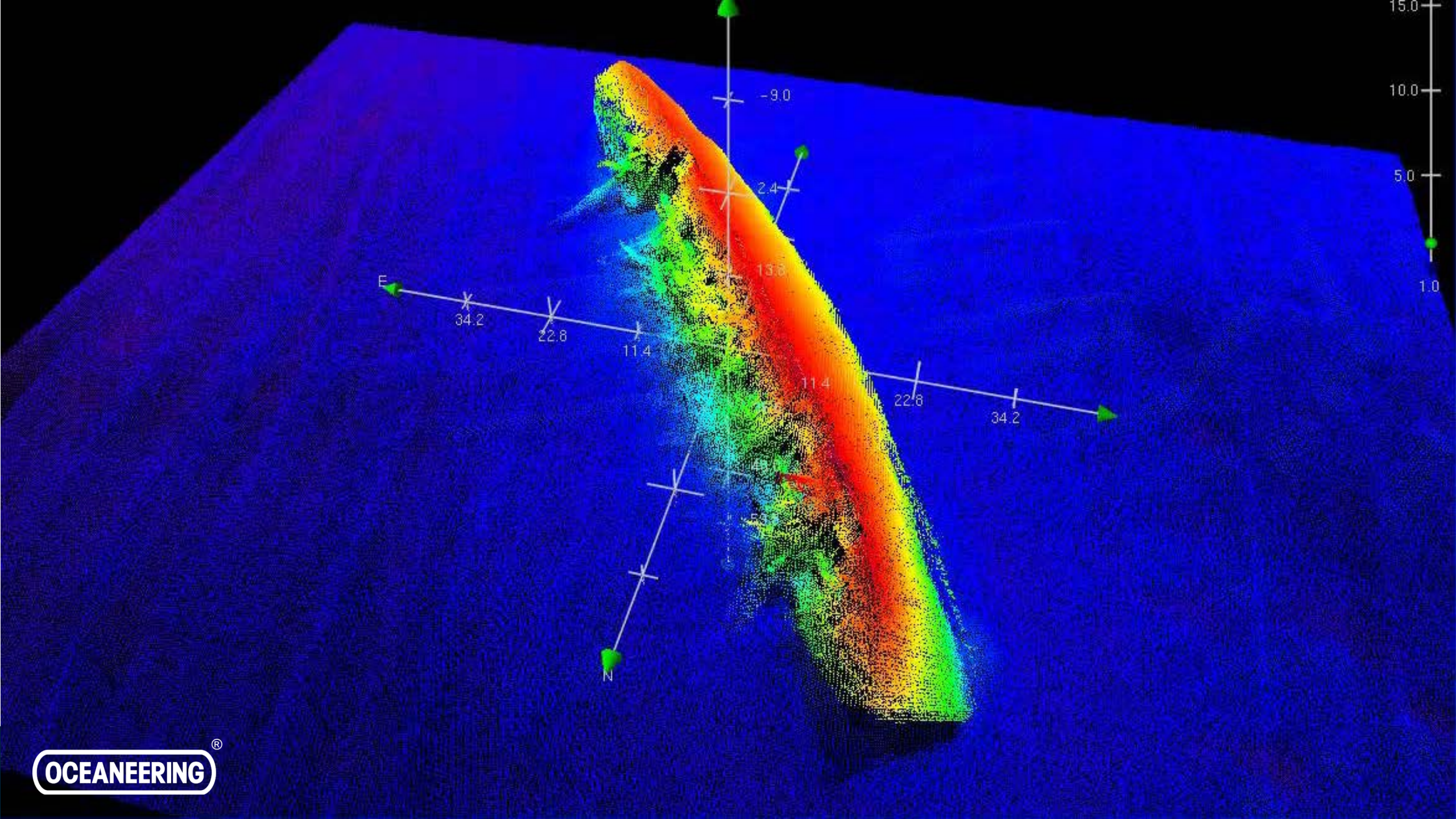




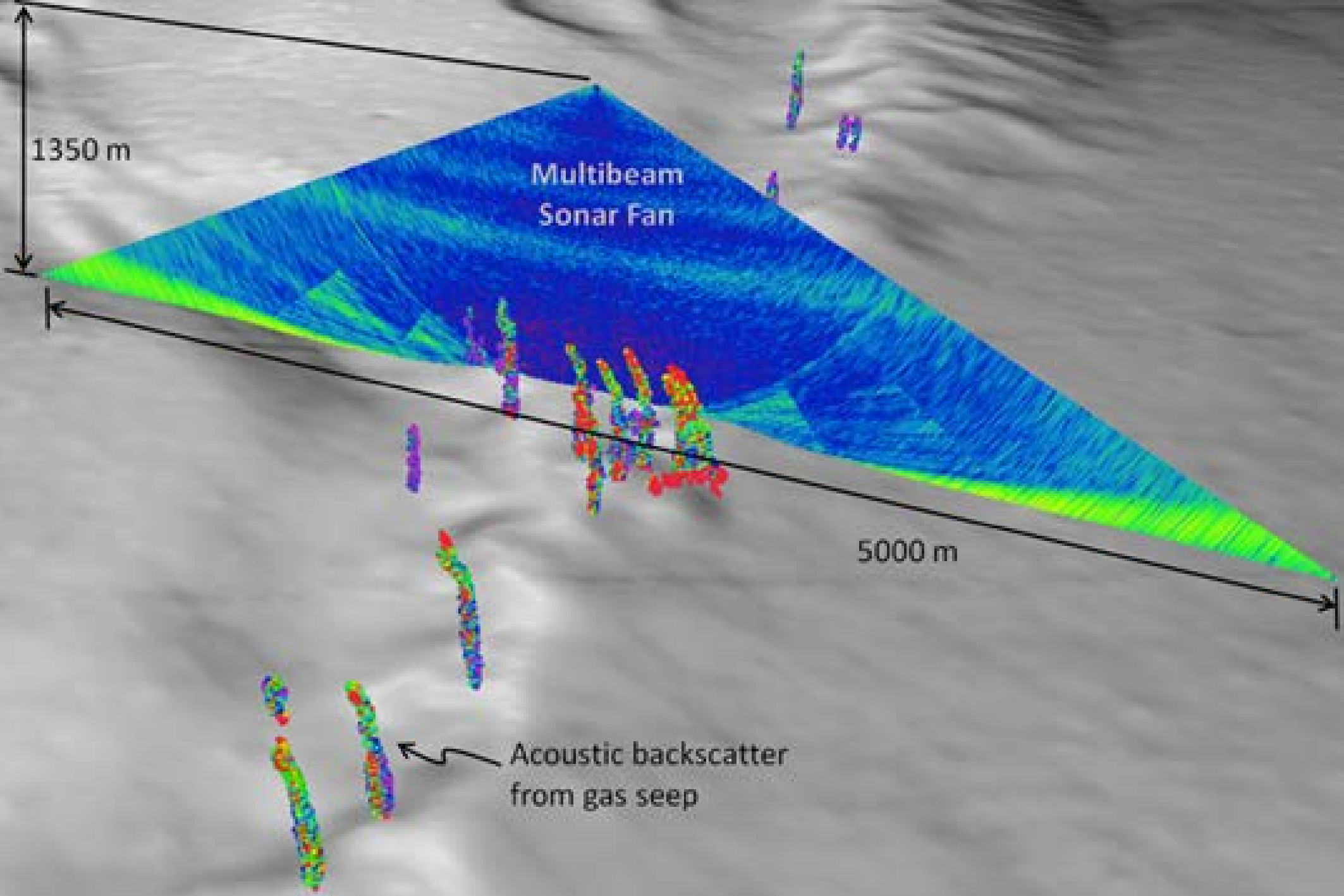












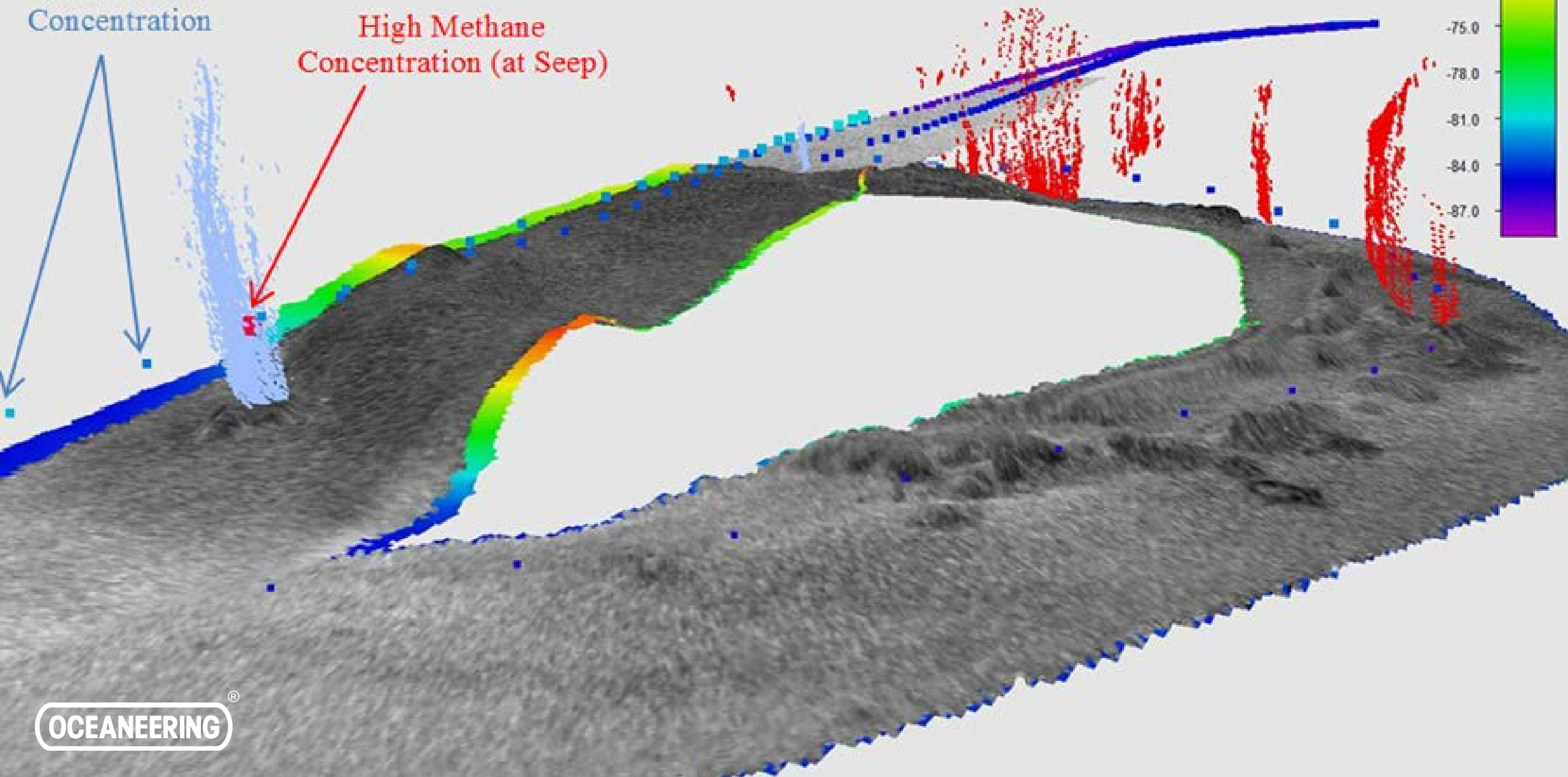
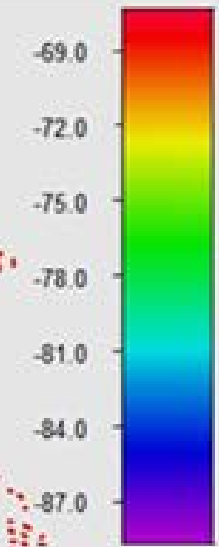




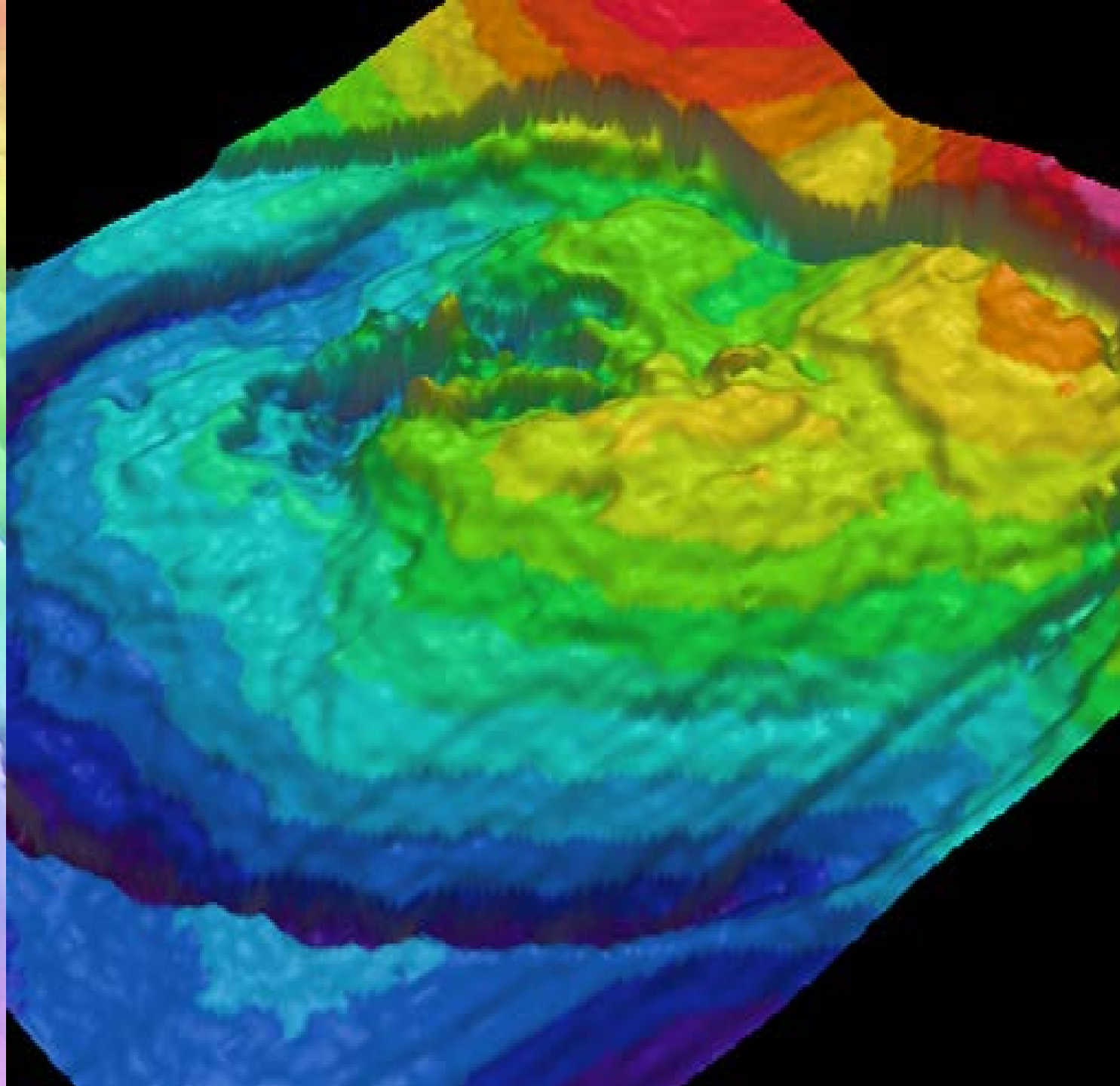
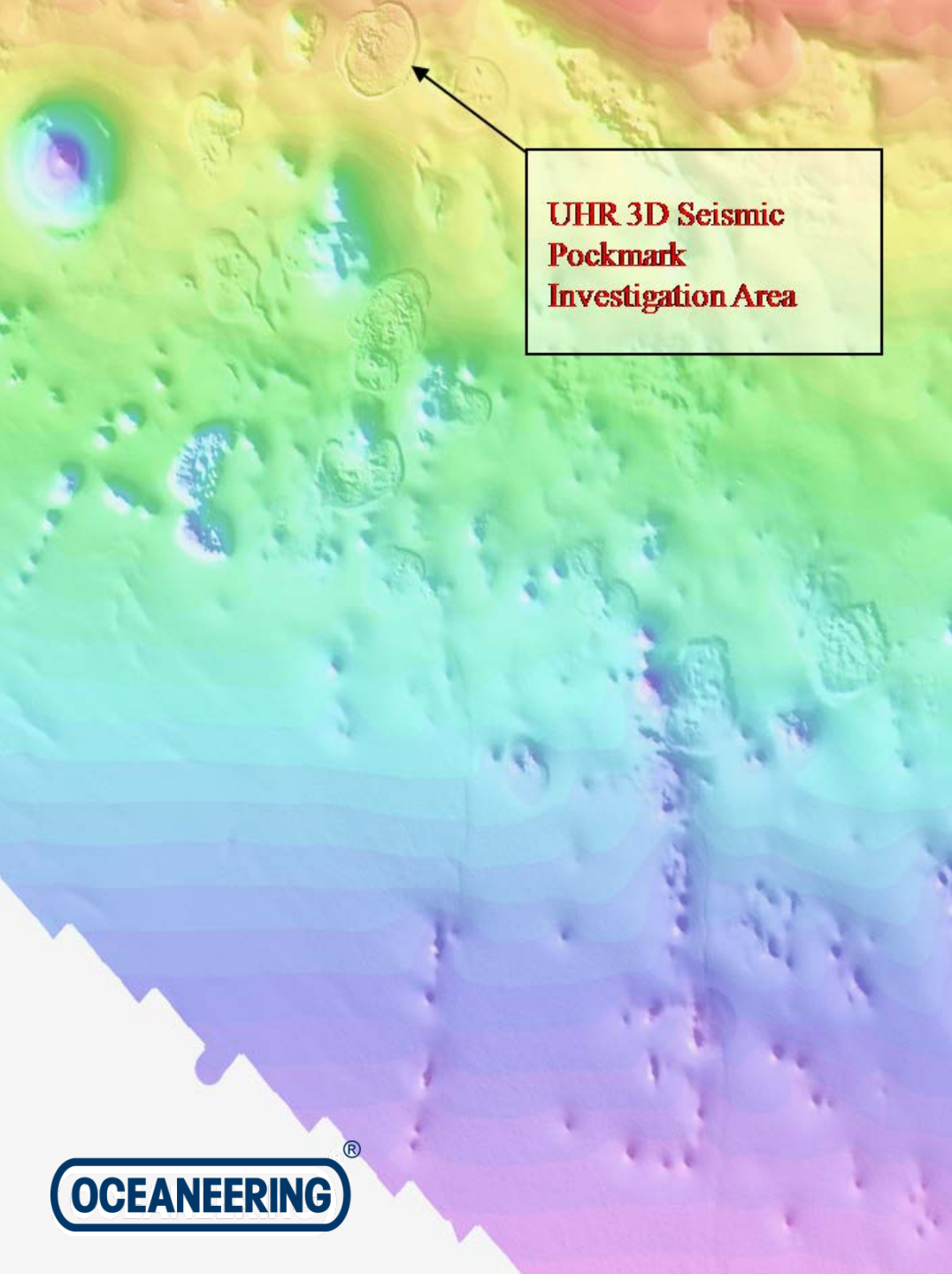


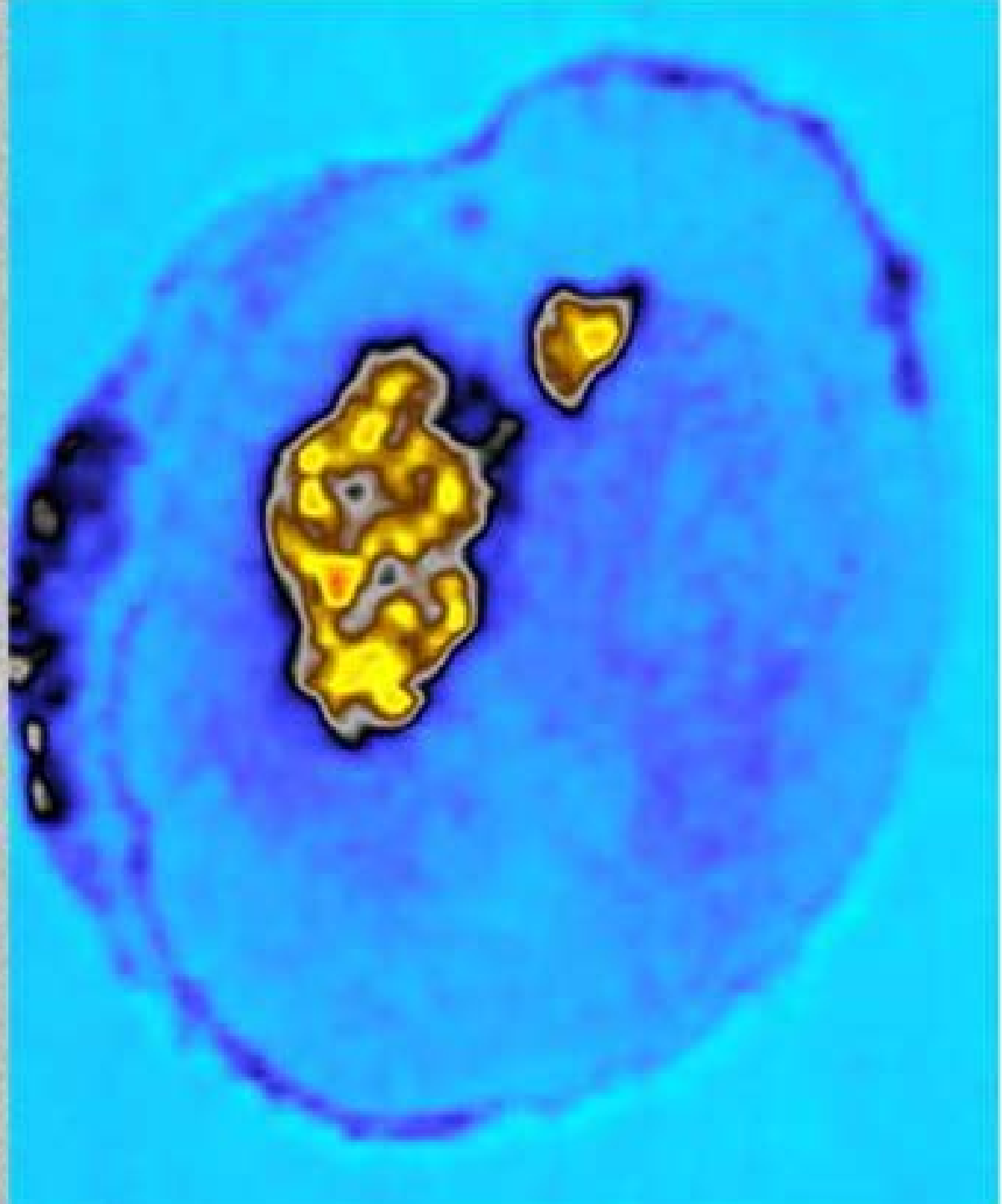
Low Methane  
Concentration

High Methane  
Concentration (at Seep)



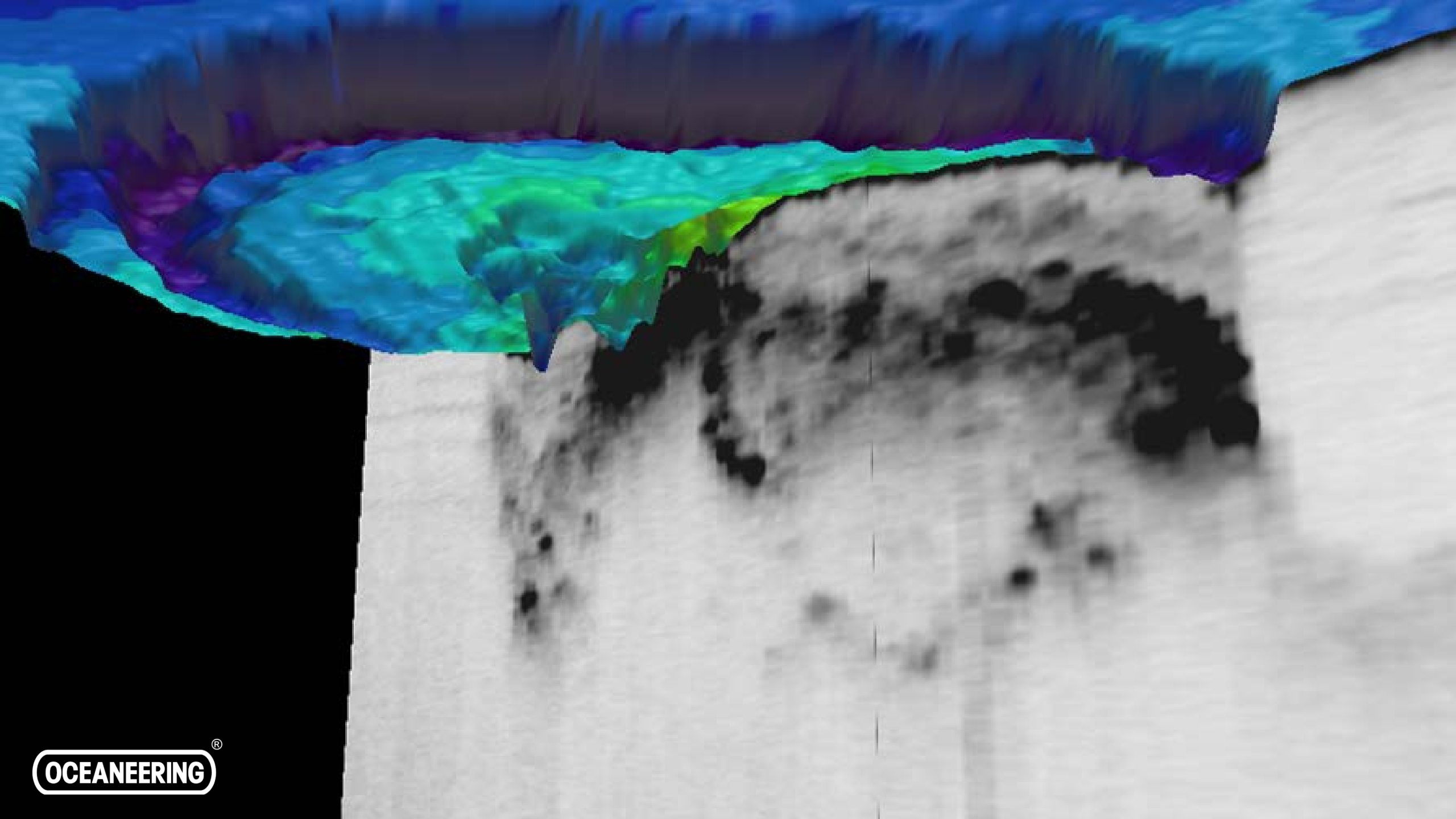




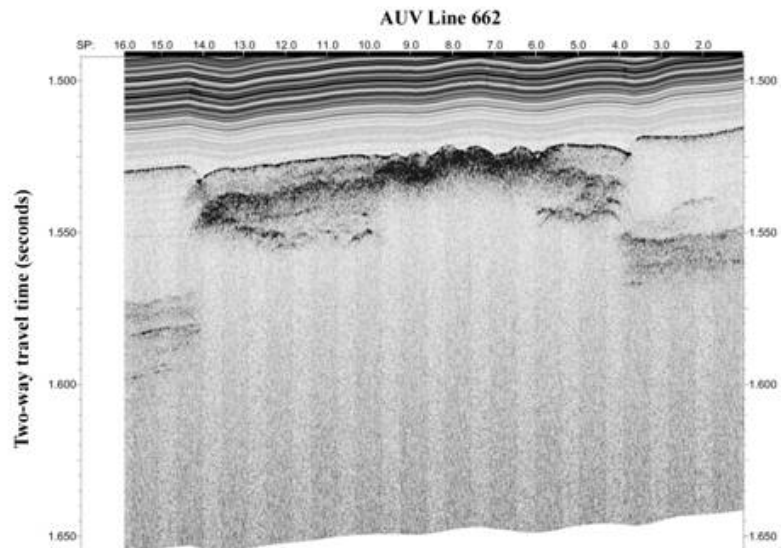
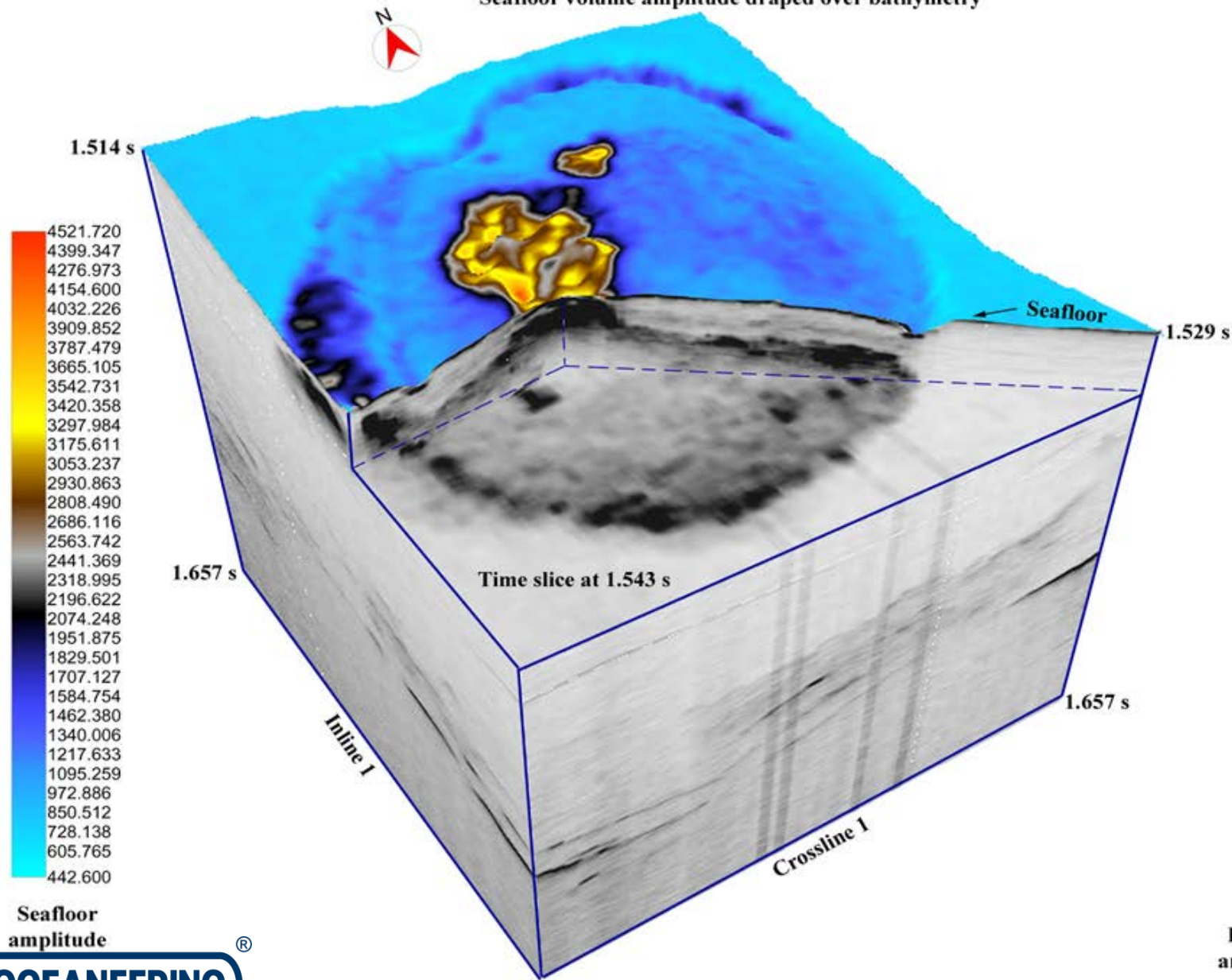


OCEANEERING®



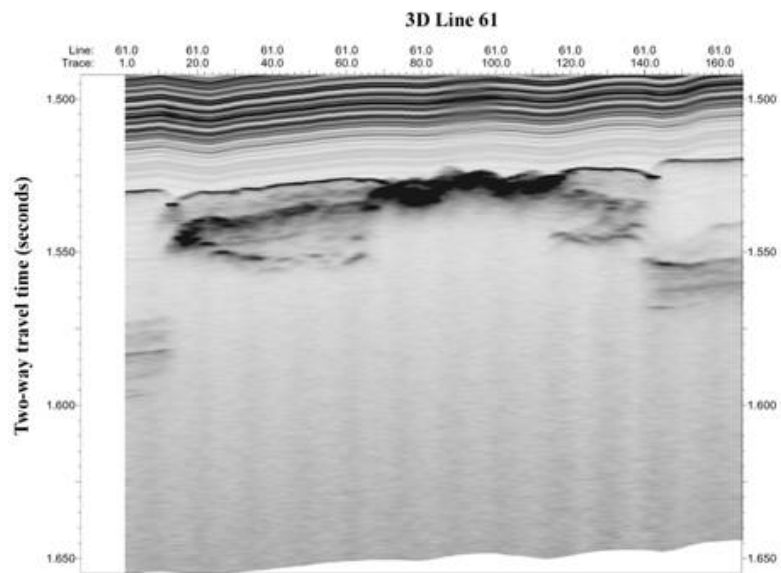


### Seafloor volume amplitude draped over bathymetry



- 64.61
- 63.00
- 61.38
- 59.77
- 58.15
- 56.54
- 54.92
- 53.31
- 51.69
- 50.07
- 48.46
- 46.84
- 45.23
- 43.61
- 42.00
- 40.38
- 38.77
- 37.15
- 35.54
- 33.92
- 32.30
- 30.69
- 29.07
- 27.46
- 25.84
- 24.23
- 22.61
- 21.00
- 19.38
- 17.77
- 16.15
- 14.53
- 12.92
- 11.30
- 9.693
- 8.077
- 6.462
- 4.846
- 3.231
- 1.615
- 0

Relative amplitude





Let's combine our technology with your needs



